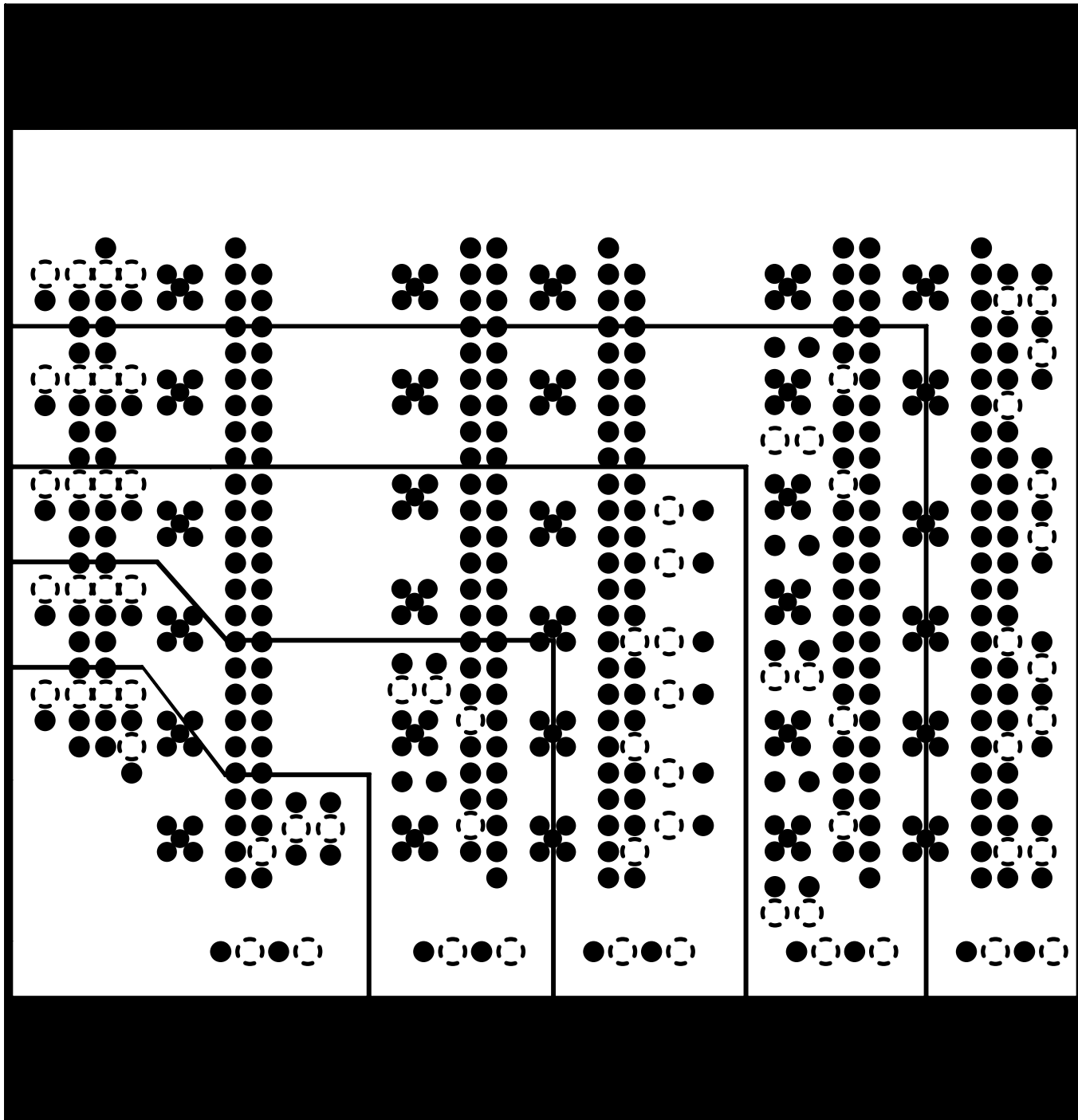


φETH  
M. Board EE  
Aug. 2005

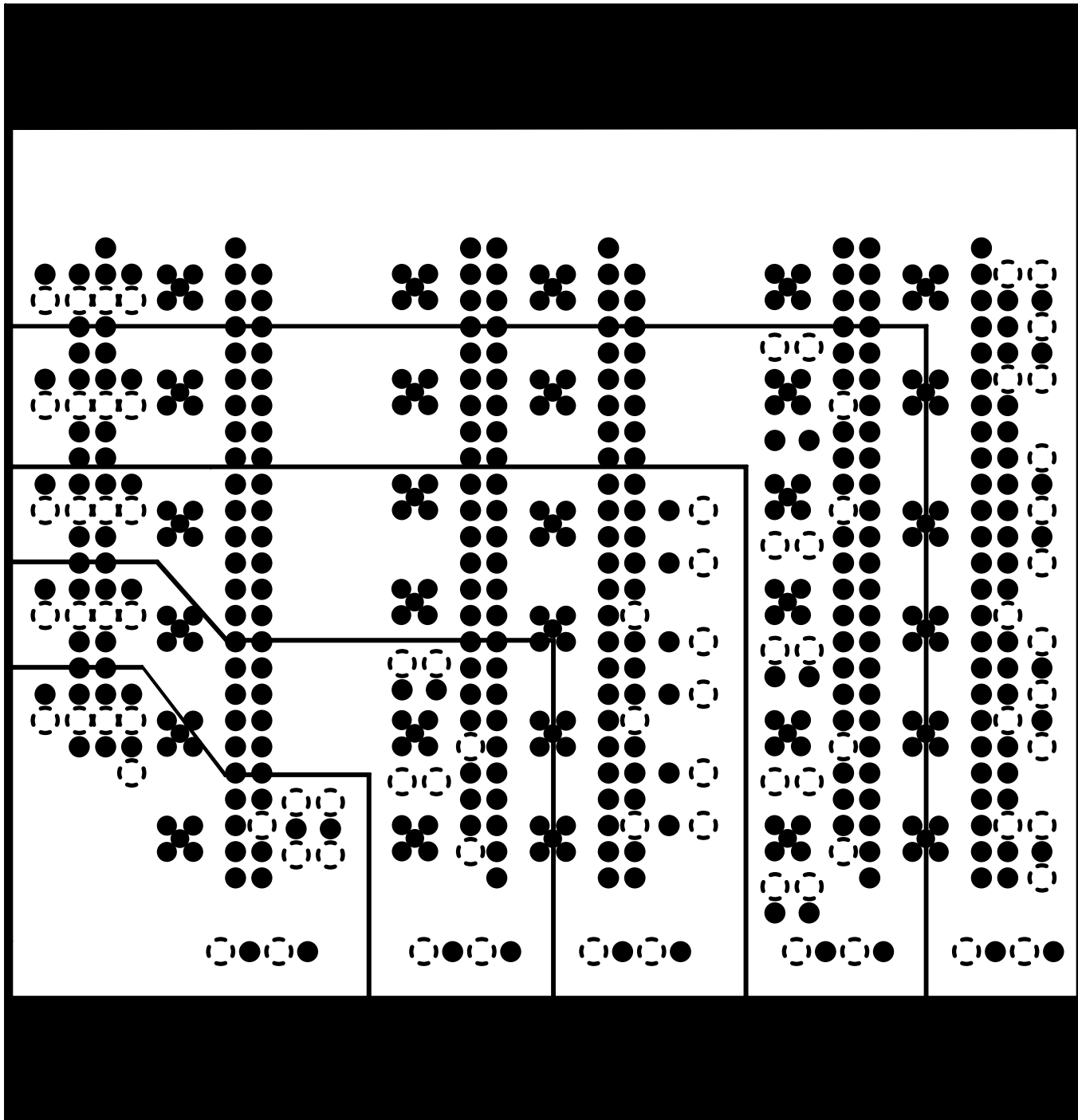
104 <mm>

108 <mm>



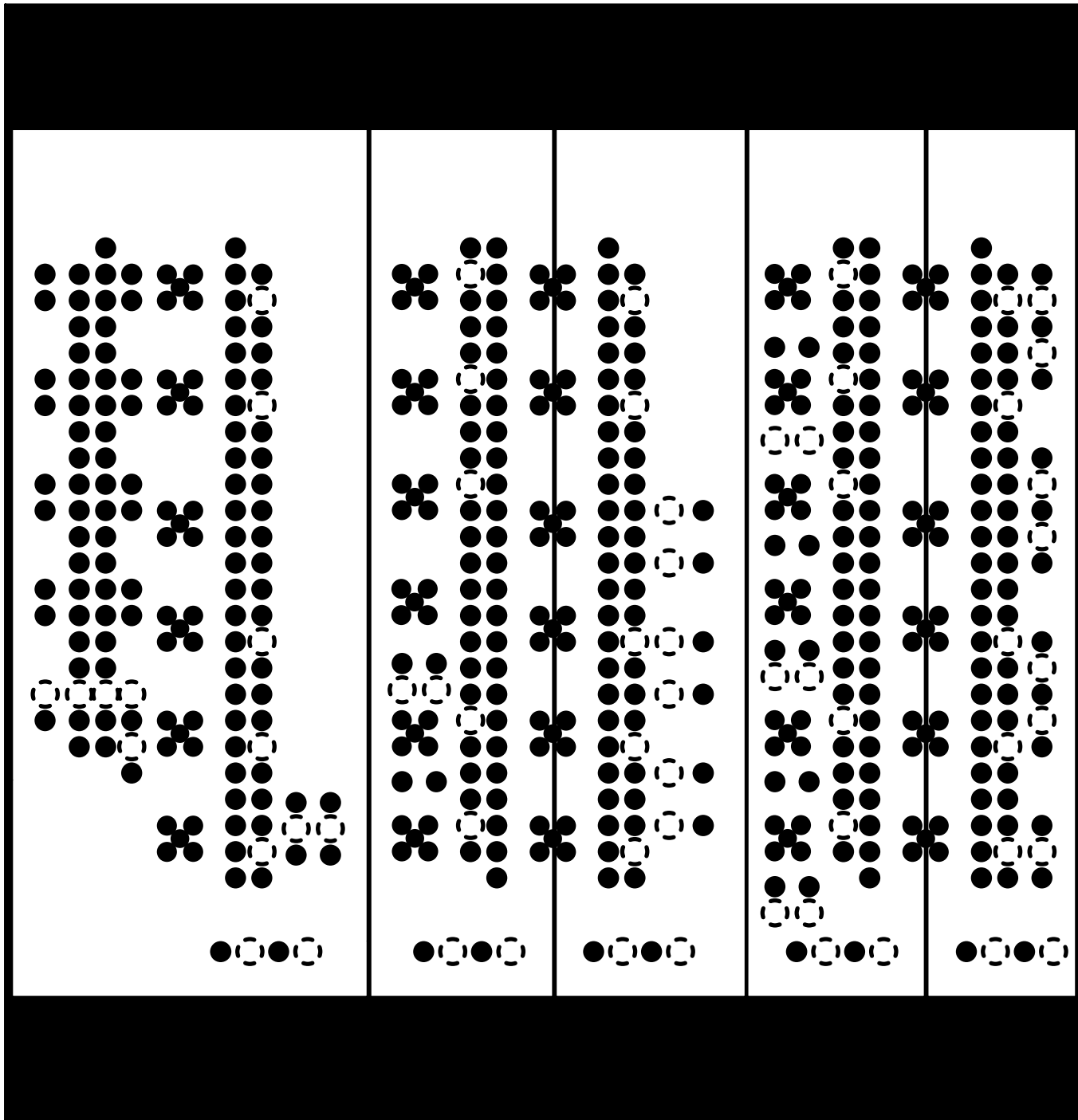
104 (mm)

108 (mm)



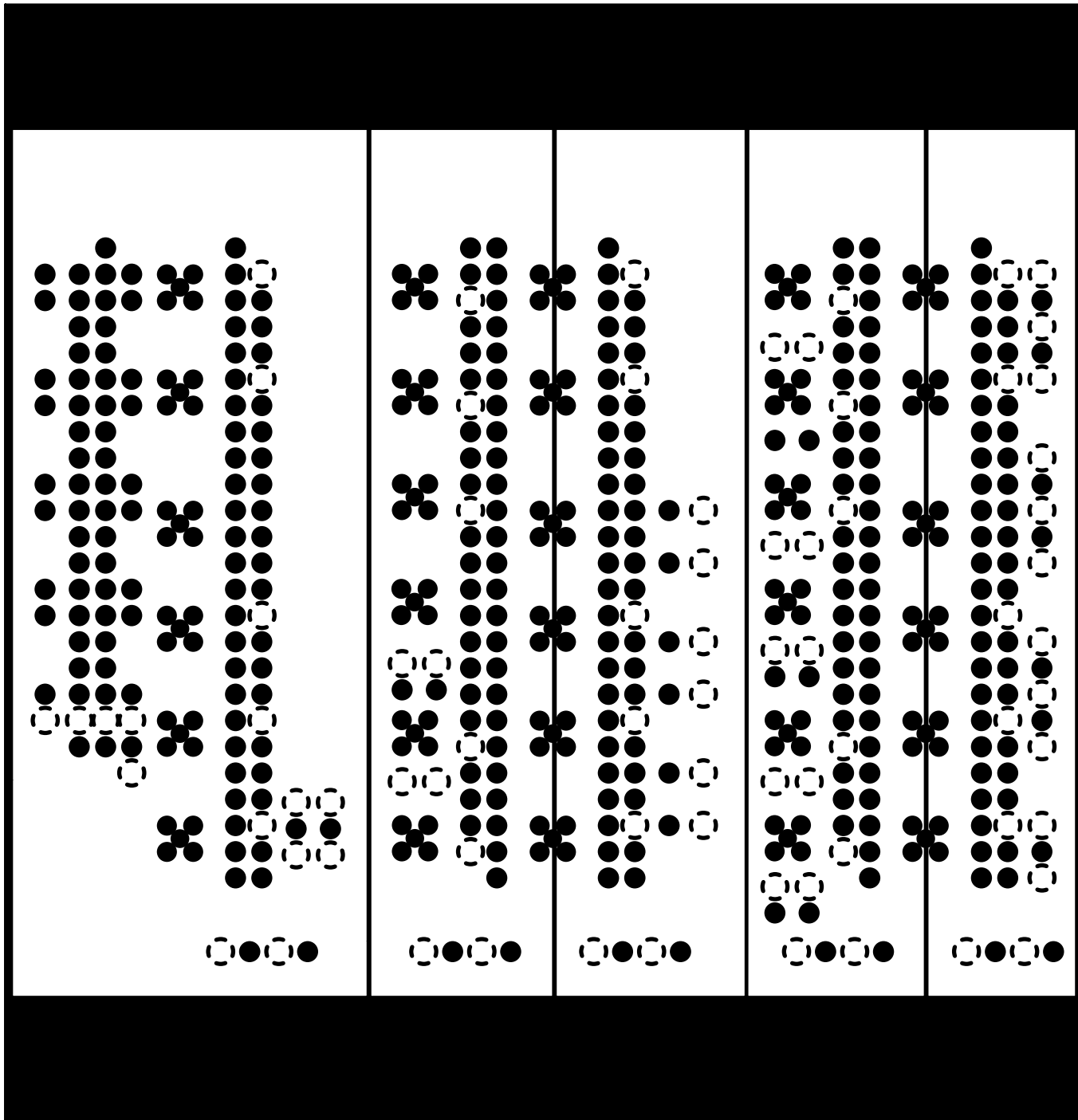
104 <mm>

108 <mm>



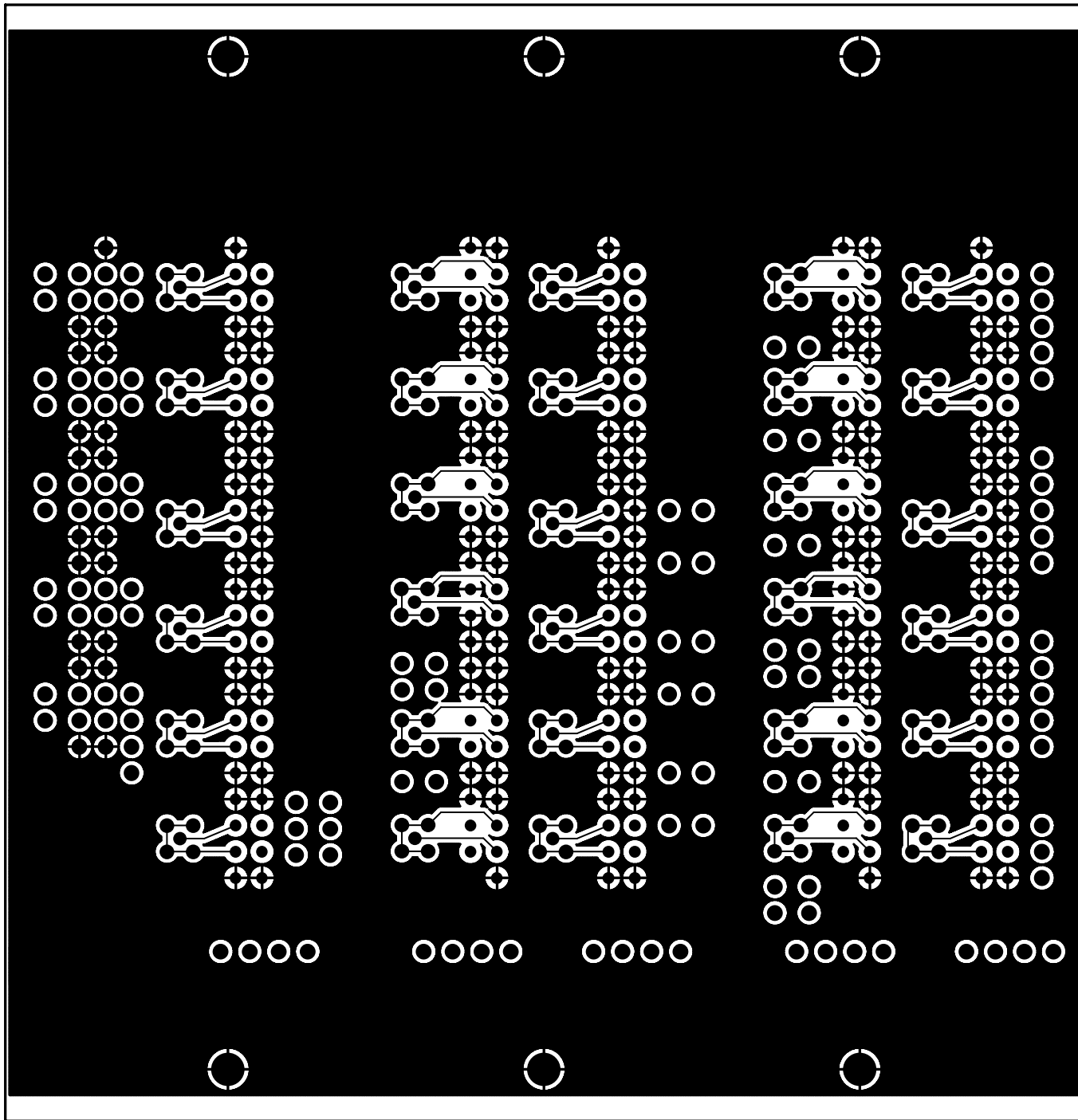
104 (mm)

108 (mm)



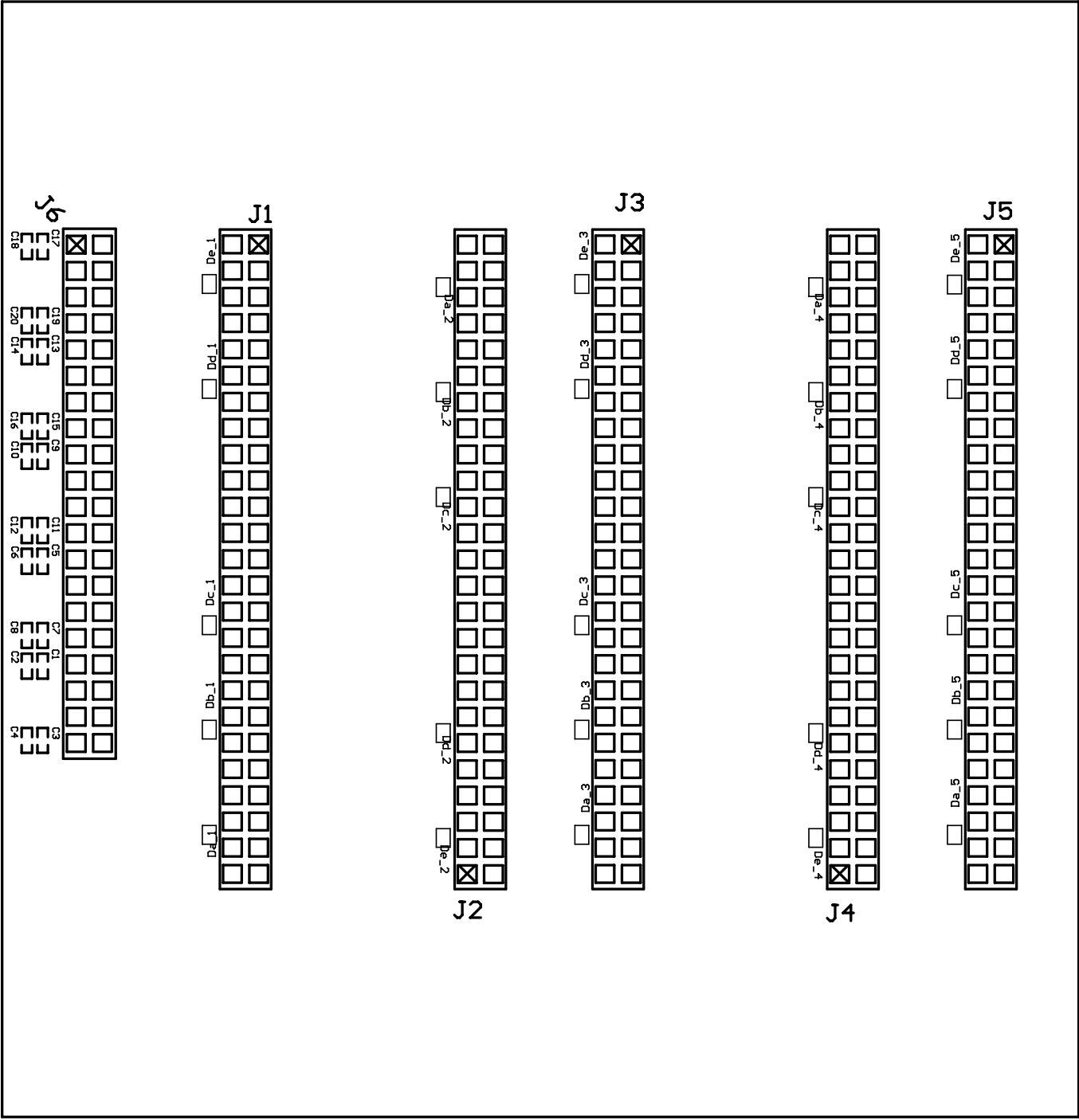
← 104 (mm) →

↑ 108 (mm) ↓



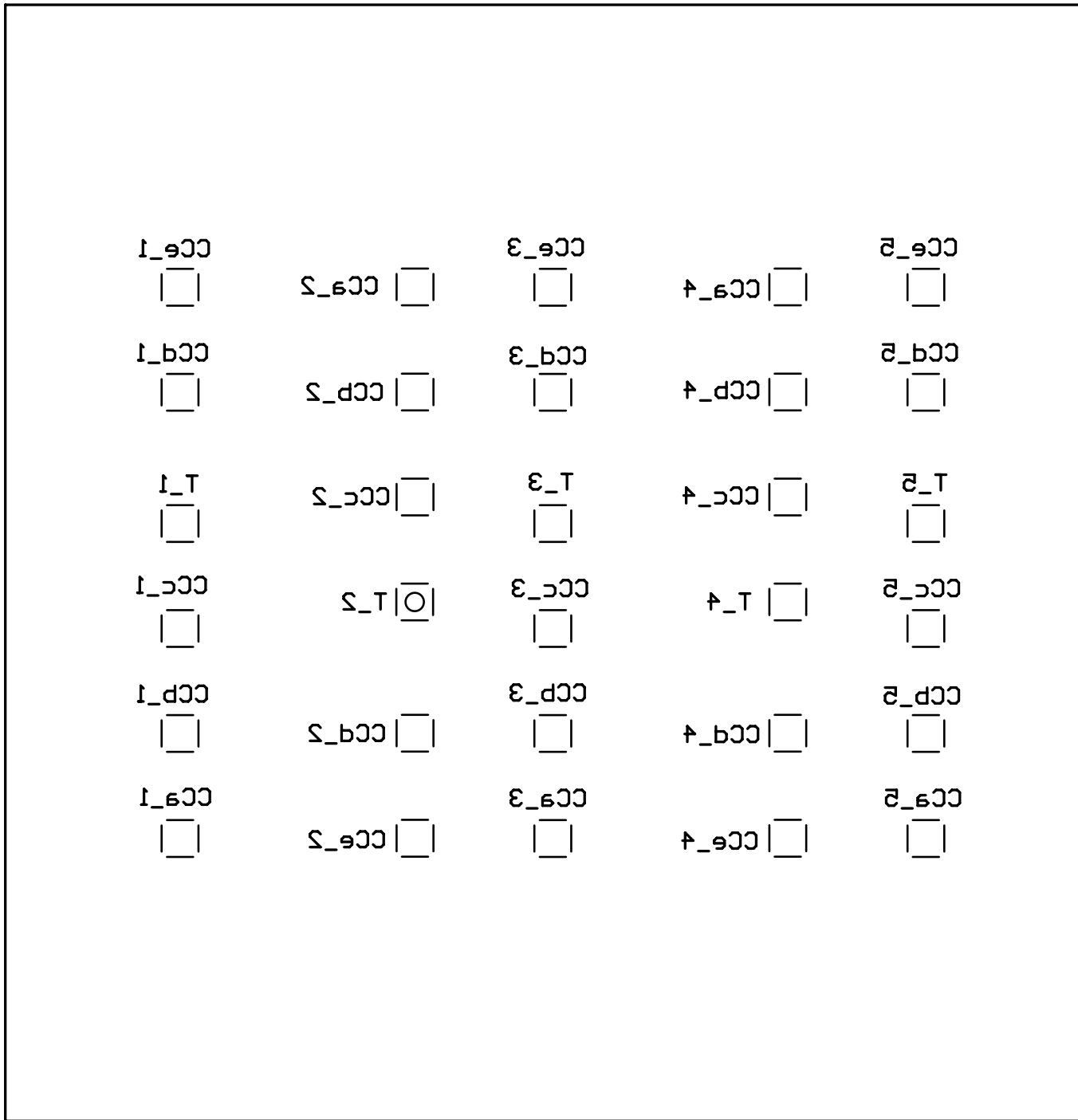
104 (mm)

108 (mm)



104 (mm)

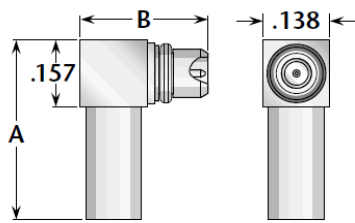
108 (mm)



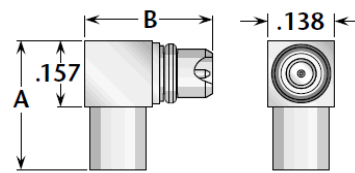
104 (mm)

108 (mm)





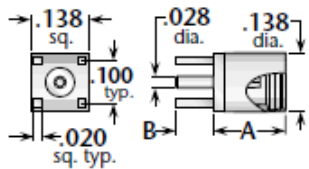
**Figure 3**  
(Right angle crimp type for flexible cable)



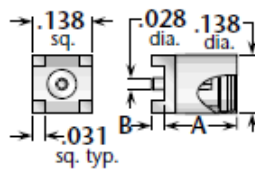
**Figure 4**  
(Right angle direct solder for semi-rigid cable)

Cable Group	Figure	Dimensions		Plating		Delta P/N	Assembly Procedure/Trim Code
		A	B	Body	Contact		
9	1	.61	.27	Gold*	Gold	9503-037-G000-500	B/37
9	3	.43	.27	Gold*	Gold (C)	9507-037-G001-500	L/04
11	1	.61	.27	Gold*	Gold	9503-038-G000-500	B/37
11	3	.43	.27	Gold*	Gold (C)	9507-038-G001-500	L/05
14	2	.49	.16	Gold*	Gold	9501-025-G003-500	H/03
14	4	.30	.27	Gold*	Gold (C)	9505-025-G003-500	J/04

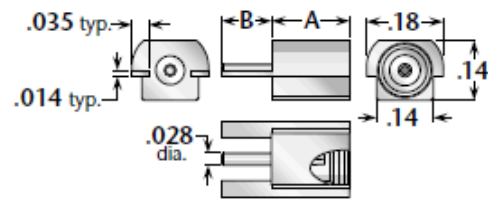
### Printed-Circuit Board Jack Receptacles



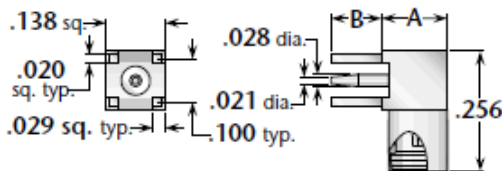
**Figure 1**  
(Straight through-hole mount)



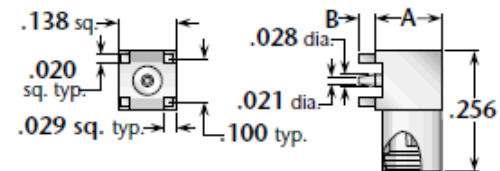
**Figure 2**  
(Straight surface mount)



**Figure 3**  
(Straight flush edge mount)



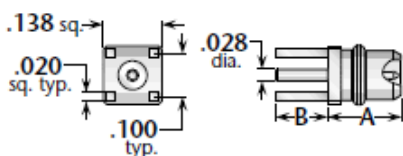
**Figure 4**  
(Right angle through-hole mount)



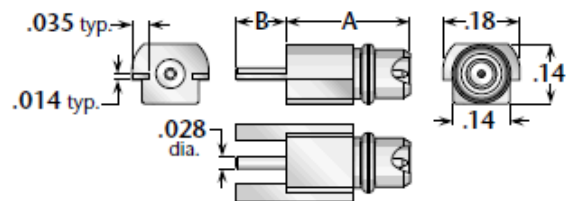
**Figure 5**  
(Right angle surface mount)

Figure	Dimensions		Max. Board	Mounting Figure	Plating		Delta P/N
	A	B			Body	Contact	
1	.171	.120	.100	PCB08	Gold*	Gold (C)	9567-000-G001-500
1	.166	.031	.020	PCB08	Gold*	Gold (C)	9567-000-G001-501
2	.166	.031	N/A	**	Gold*	Gold (C)	9567-000-G001-503
3	.171	.120	N/A	**	Gold*	Gold (C)	9567-000-G001-502
4	.150	.118	.100	PCB08	Gold*	Gold (C)	9569-000-G001-500
5	.150	.031	N/A	**	Gold*	Gold (C)	9569-000-G001-501

### Printed-Circuit Board Plug Receptacles



**Figure 1**  
(Straight through-hole mount)



**Figure 2**  
(Straight flush edge mount)

Figure	Dimensions		Max. Board	Mounting Figure	Plating		Delta P/N
	A	B			Body	Contact	
1	.171	.120	.100	PCB08	Gold*	Gold (C)	9568-000-G001-500
2	.282	.120	N/A	**	Gold*	Gold (C)	9568-000-G001-501
2	.173	.120	N/A	**	Gold*	Gold (C)	9568-000-G001-502

Dear Lubomir,

Thank you very much for your inquiry. We discussed this with our Partner Delta Electronics and now they answered as follows:

**I have checked with the engineering department and we have no current design. For a special MMCX there would likely be a 1000pc-2500pc minimum required. What is the quantity of your request? Also, we would need to have the special cable specification.**

Please check this and give us your comments please.

Thank you in advance for your efforts and best regards,  
Thomas

--  
\*\*\*\*\*  
SEMIC RF Electronic GmbH  
Postweg 2  
D-82024 Taufkirchen  
[Thomas.B@semic.de](mailto:Thomas.B@semic.de)  
Tel +49 89 614152-217  
Fax +49 89 614152-222  
\*\*\*\*\*

---