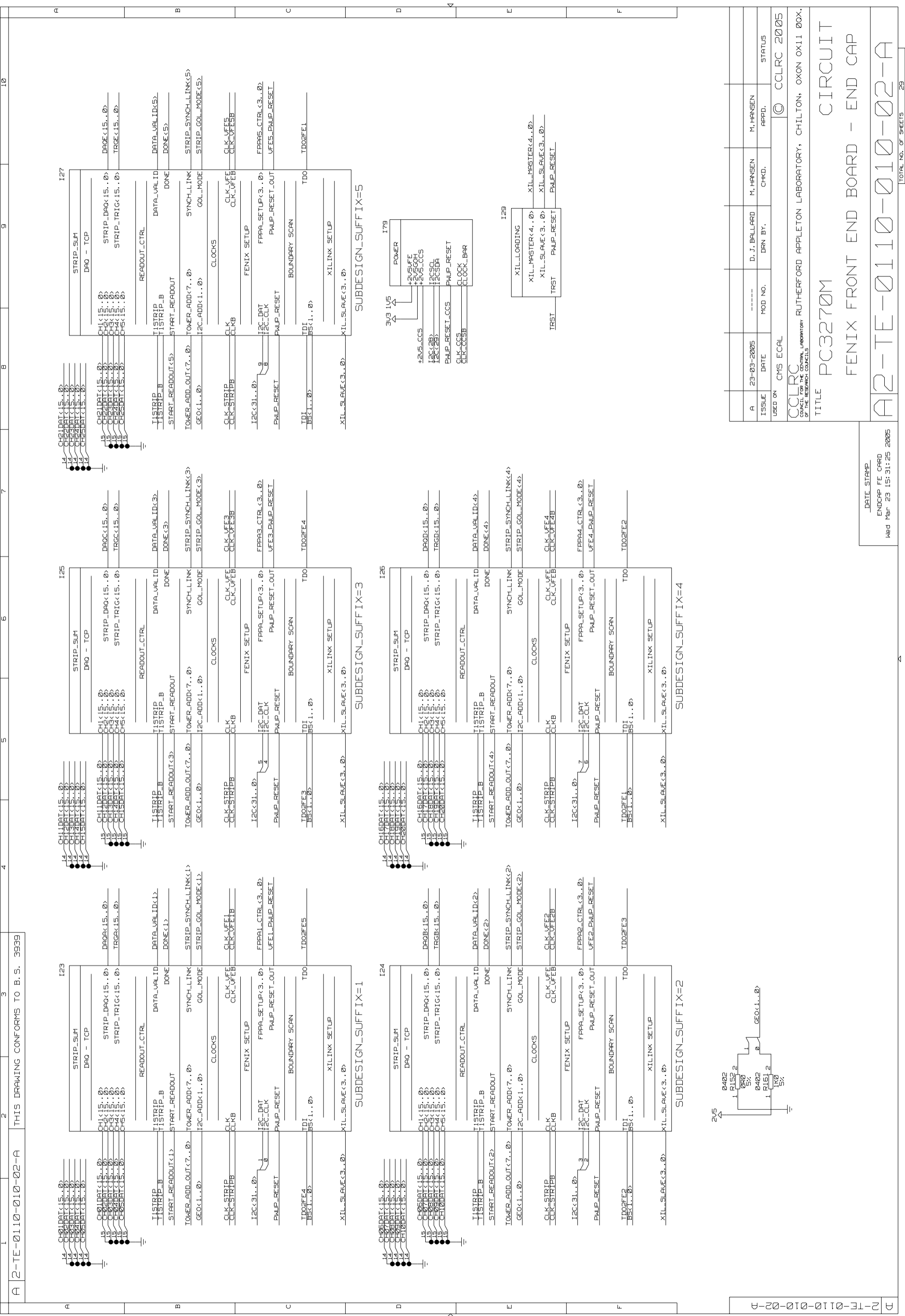


LOCATED NEAR END OF TRACE

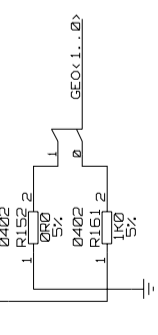
DATE STAMP  
ENDCAP FE CARD  
Wed Mar 23 15:37:17 2005

A	23-03-2005	DATE	-----	D. J. BALLARD	M. HANSEN	M. HANSEN	
	ISSUE	MOD NO.		DRN BY.	CHKD.	APPD.	STATUS
USED ON CMS ECAL							© CCLRC 2005
CCLRC COUNCIL FOR THE CENTRAL LABORATORY OF THE RESEARCH COUNCILS							
RUTHERFORD APPLETON LABORATORY, CHILTON, OXON OX11 0QX.							
TITLE PC3270M FENIX FRONT END BOARD - END CAP							
A2-TE-0110-010-01-A							



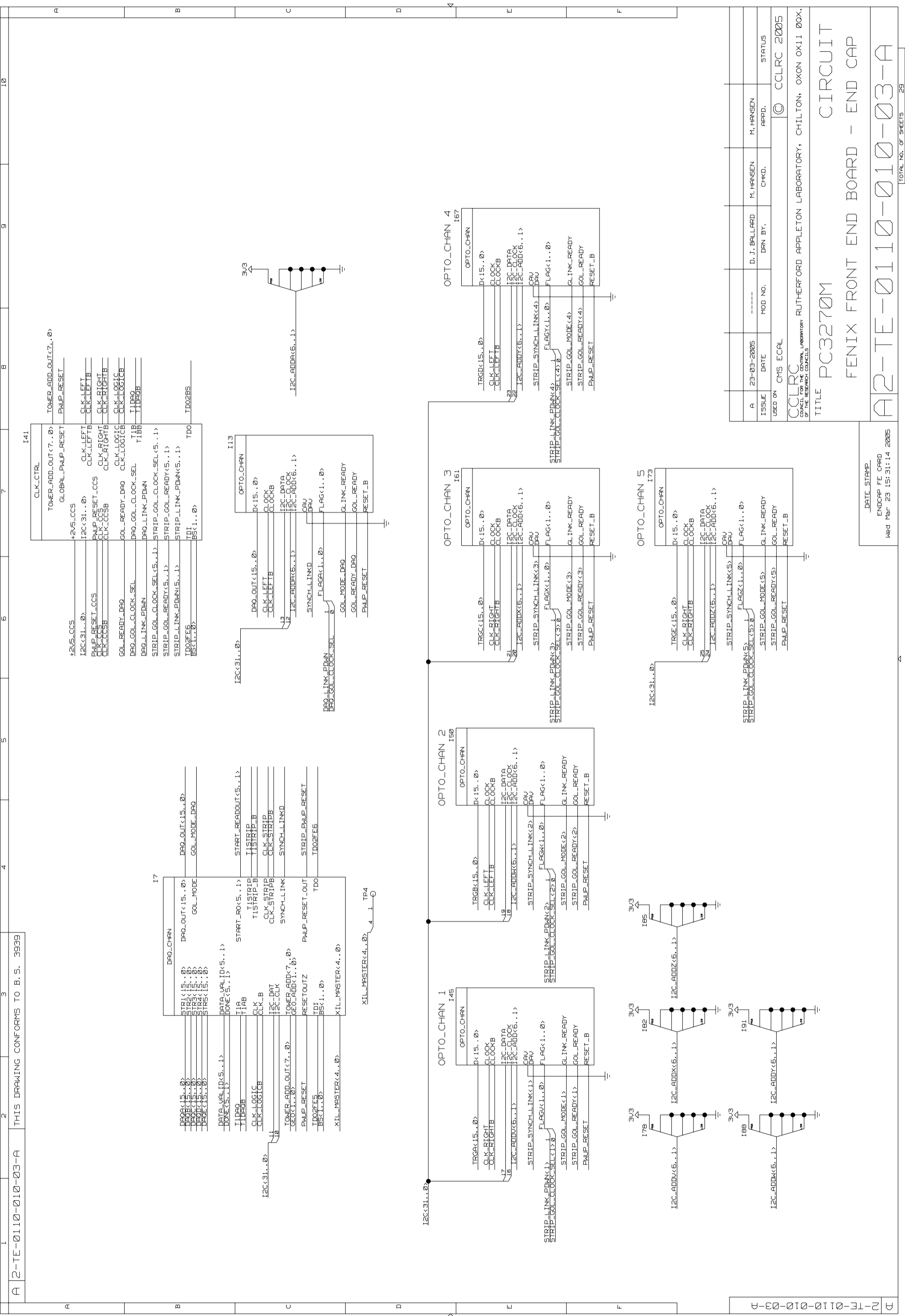
A 12-TE-0110-02-A THIS DRAWING CONFORMS TO B. S. 3939

1	2	3	4	5	6	7	8	9	10
---	---	---	---	---	---	---	---	---	----



ISSUE	A	23-03-2005	DATE	-----	D. J. BALLARD	M. HANSEN	M. HANSEN	STATUS
USED ON	CMS ECAL			MOD NO.	DRN BY.	CHKD.	APPD.	
CCLRC RUTHERFORD APPLETON LABORATORY, CHILTON, OXON OX11 0OX. COUNCIL FOR THE CENTRAL LABORATORY OF THE RESEARCH COUNCILS								
TITLE PC3270M FENIX FRONT END BOARD - END CAP								
A2-TE-0110-02-A								

DATE STAMP  
ENDCAP FE CARD  
Wed Mar 23 15:31:25 2005



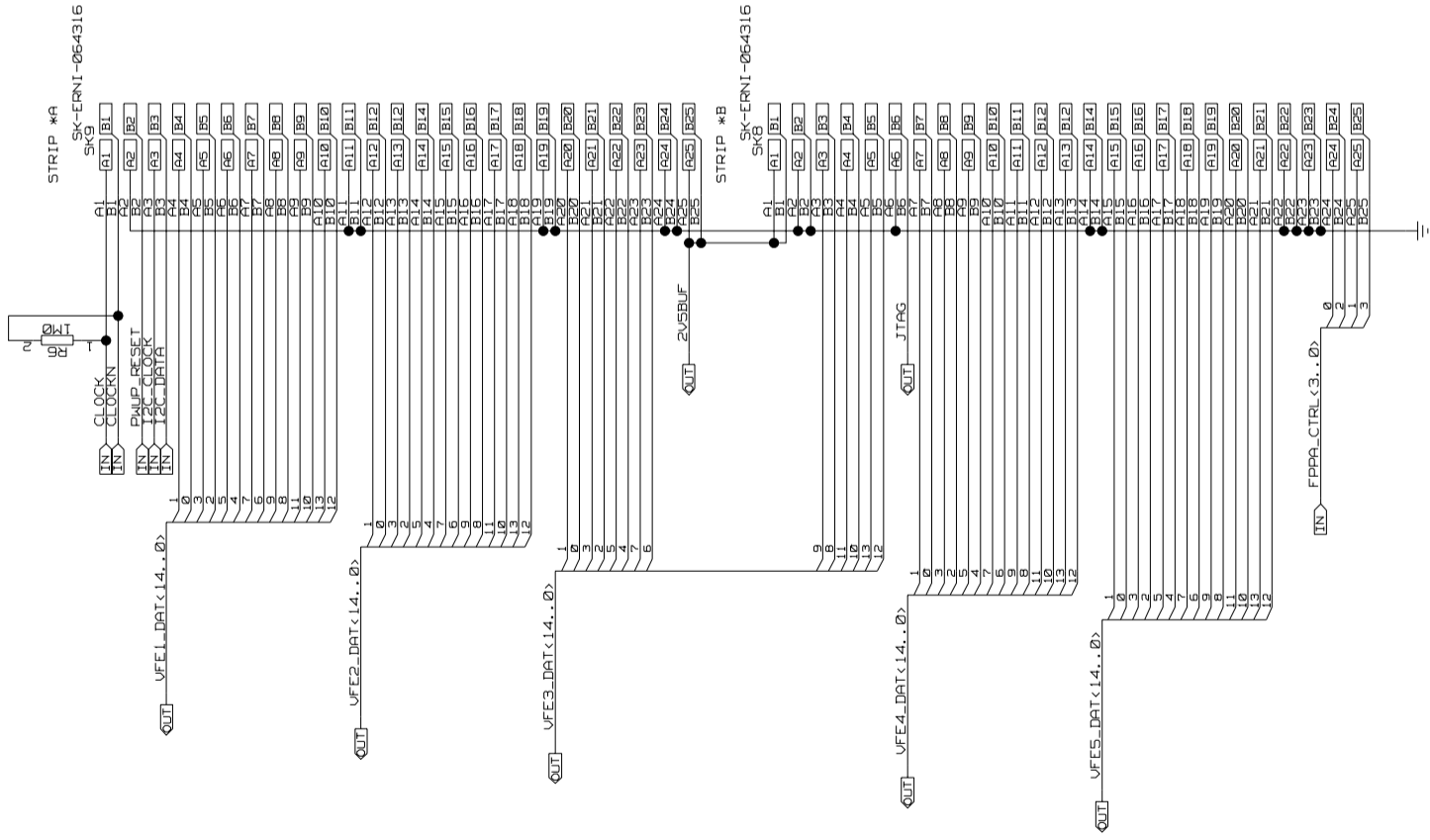
A 2-TE-0110-03-A THIS DRAWING CONFORMS TO B. S. 3939

1	2	3	4	5	6	7	8	9	10
---	---	---	---	---	---	---	---	---	----

DATE STAMP  
ENDCAP FE CARD  
Wed Mar 23 15:31:14 2005

ISSUE	A	23-03-2005	DATE	-----	MOD NO.	D. J. BALLARD	M. HANSEN	M. HANSEN	STATUS
USED ON	CMS ECAL		RUTHERFORD APPLETON LABORATORY, CHILTON, OXON OX11 0OX.		CCLRC		COUNCIL FOR THE CENTRAL LABORATORY OF THE RESEARCH COUNCILS		
TITLE PC3270M									
FENIX FRONT END BOARD - END CAP									
A2-TE-0110-03-A									
TOTAL NO. OF SHEETS 29									

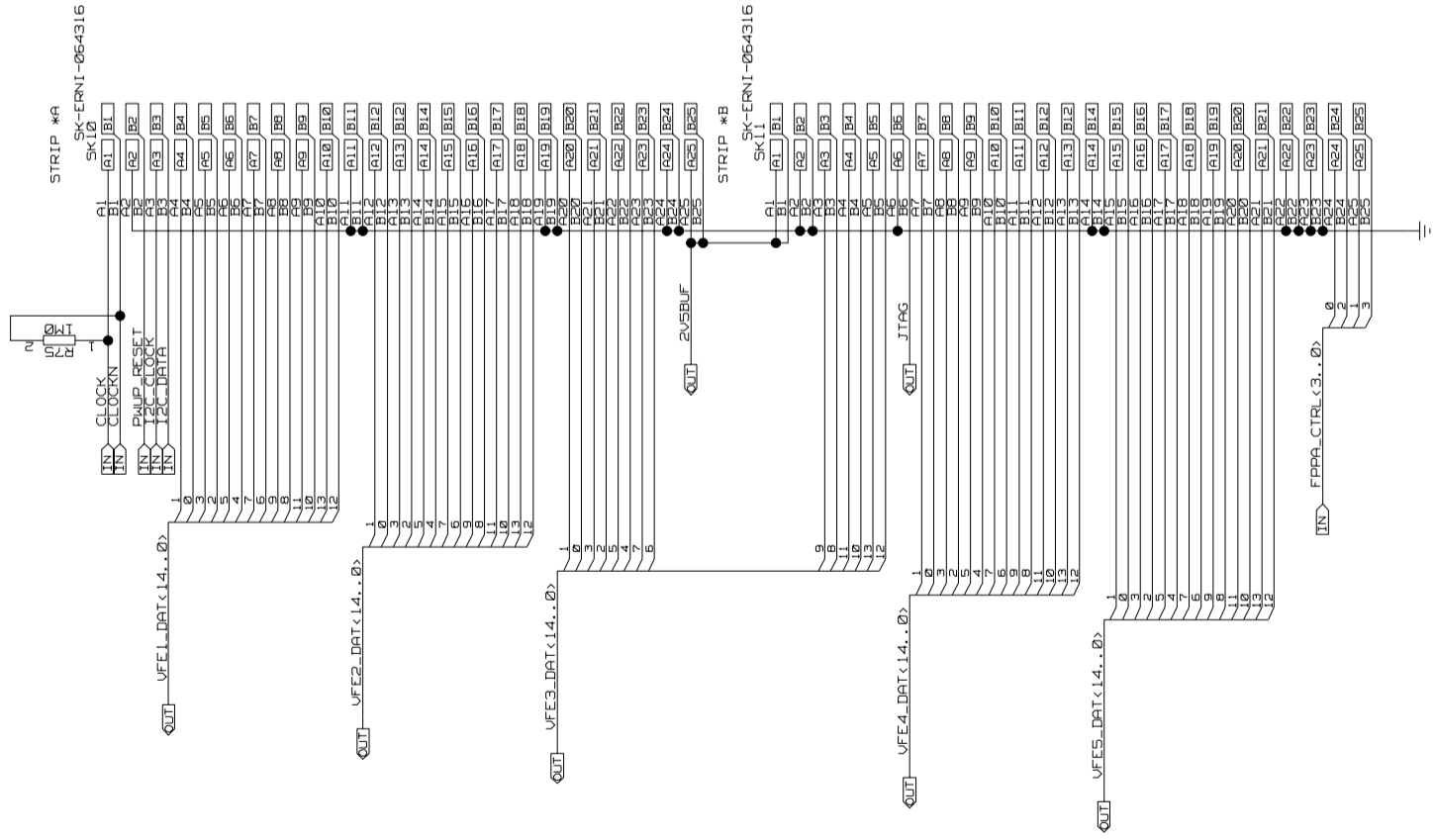
A 12-TE-0110-010-(4-8)-A THIS DRAWING CONFORMS TO B. S. 3939



VFE TO FE CONNECTOR

DATE STAMP  
ENDCAP FE CARD  
Wed Mar 23 15:37:09 2005

A	23-03-2005	DATE	-----	M. HANSEN	M. HANSEN	APPD.	STATUS	
USED ON							CMS ECAL	© CCLRC 2005
CCLRC COUNCIL FOR THE CENTRAL LABORATORY OF THE RESEARCH COUNCILS RUTHERFORD APPLETON LABORATORY, CHILTON, OXON OX11 0QX.								
TITLE PC3270M								
FENIX FRONT END BOARD - END CAP								
A2-TE-0110-010-(4-8)-A								

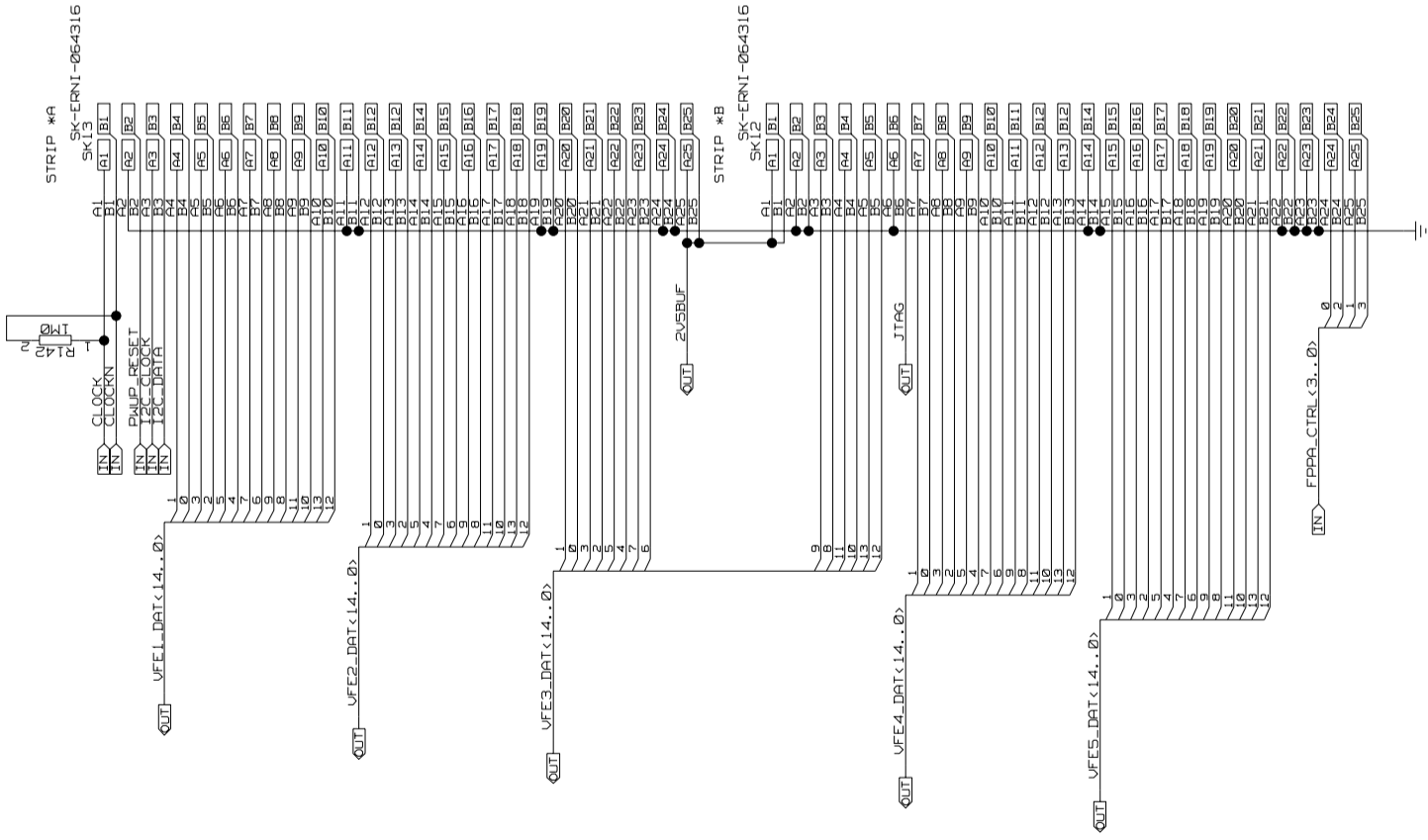


VFE TO FE CONNECTOR

DATE STAMP  
ENDCAP FE CARD  
Wed Mar 23 15:37:09 2005

10	9	8	7	6	5	4	3	2	1
F	E	D	C	B	A				

ISSUE	DATE	MOD NO.	DRN BY.	CHKD.	M. HANSEN APPD.	M. HANSEN APPD.	STATUS
A	23-03-2005	-----	D. J. BALLARD				CCLRC 2005
USED ON: CMS ECAL							
CCLRC RUTHERFORD APPLETON LABORATORY, CHILTON, OXON OX11 0QX. COUNCIL FOR THE CENTRAL LABORATORY OF THE RESEARCH COUNCILS							
TITLE: PC3270M							
FENIX FRONT END BOARD - END CAP							
A2-TE-0110-010-(4-8)-A							
TOTAL NO. OF SHEETS 29							

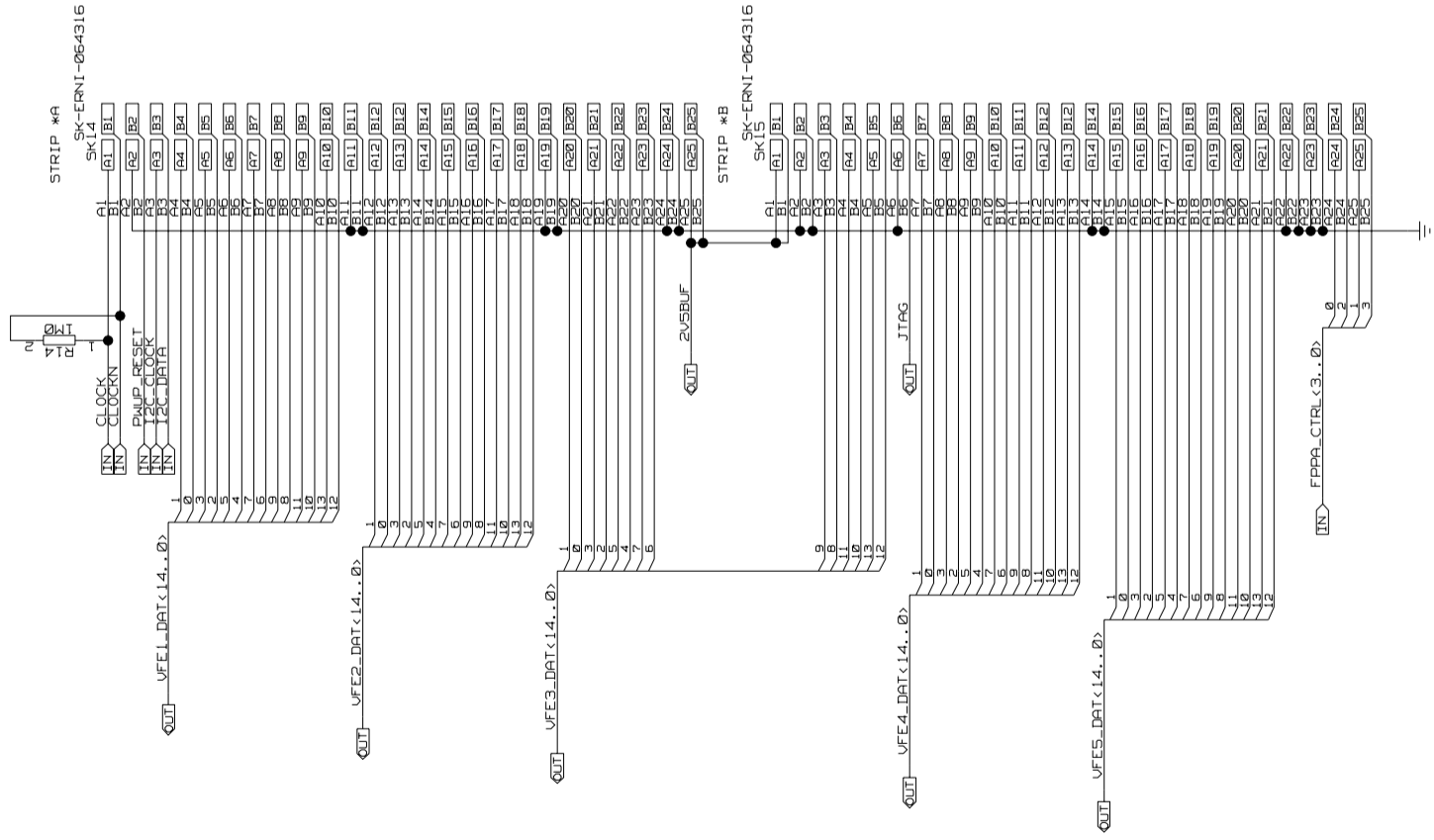


VFE TO FE CONNECTOR

DATE STAMP  
ENDCAP FE CARD  
Wed Mar 23 15:37:09 2005

A	23-03-2005	DATE	-----	M. HANSEN	M. HANSEN				
ISSUE		MOD NO.		CHKD.		DRN BY.		STATUS	
USED ON: CMS ECAL									
© CCLRC 2005									
CCLRC COUNCIL FOR THE CENTRAL LABORATORY OF THE RESEARCH COUNCILS									
RUTHERFORD APPLETON LABORATORY, CHILTON, OXON OX11 0QX.									
TITLE: PC3270M									
CIRCUIT									
FENIX FRONT END BOARD - END CAP									
A2-TE-0110-010-(4-8)-A									

A 12-TE-0110-010-(4-8)-A THIS DRAWING CONFORMS TO B. S. 3939

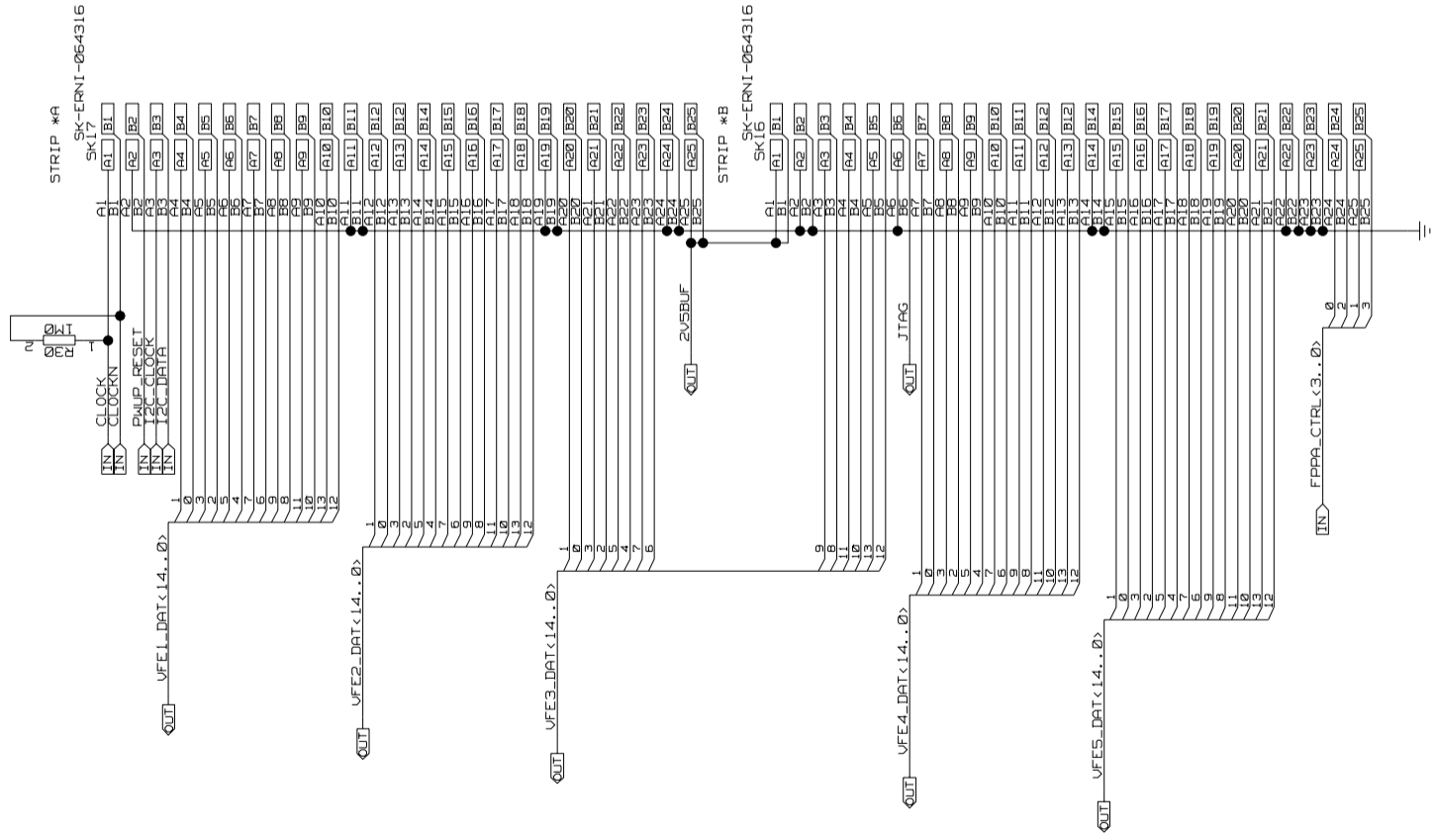


VFE TO FE CONNECTOR

DATE STAMP  
ENDCAP FE CARD  
Wed Mar 23 15:37:09 2005

A	23-03-2005	DATE	-----	M. HANSEN	M. HANSEN	STATUS
		ISSUE	MOD NO.	CHKD.	APPD.	
USED ON: CMS ECAL						© CCLRC 2005
CCLRC COUNCIL FOR THE CENTRAL LABORATORY OF THE RESEARCH COUNCILS						
RUTHERFORD APPLETON LABORATORY, CHILTON, OXON OX11 0QX.						
TITLE: PC3270M						
CIRCUIT						
FENIX FRONT END BOARD - END CAP						
A2-TE-0110-010-(4-8)-A						

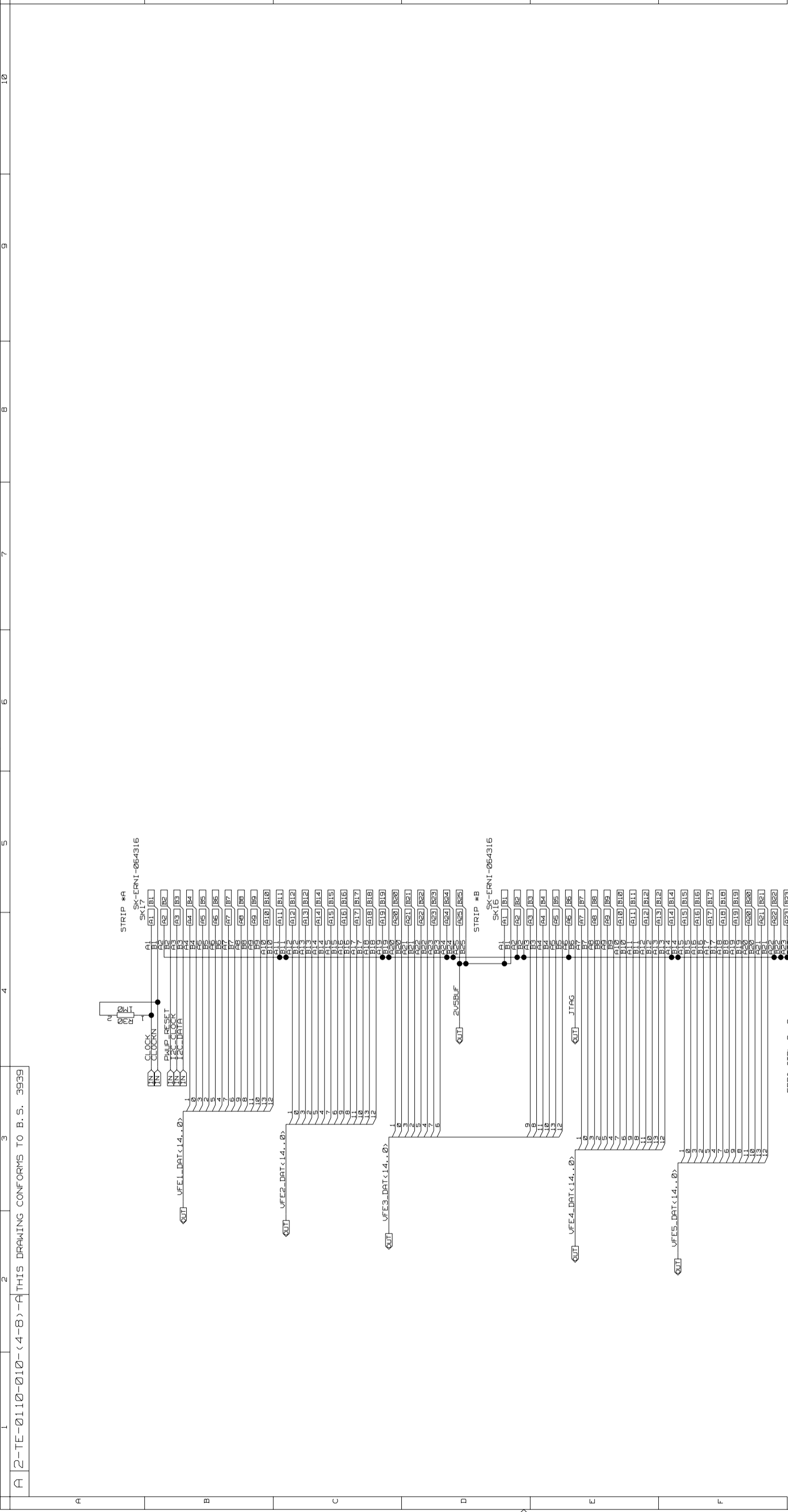
A 12-TE-0110-010-(4-8)-A THIS DRAWING CONFORMS TO B. S. 3939



UFE TO FE CONNECTOR

DATE STAMP  
ENDCAP FE CARD  
Wed Mar 23 15:37:09 2005

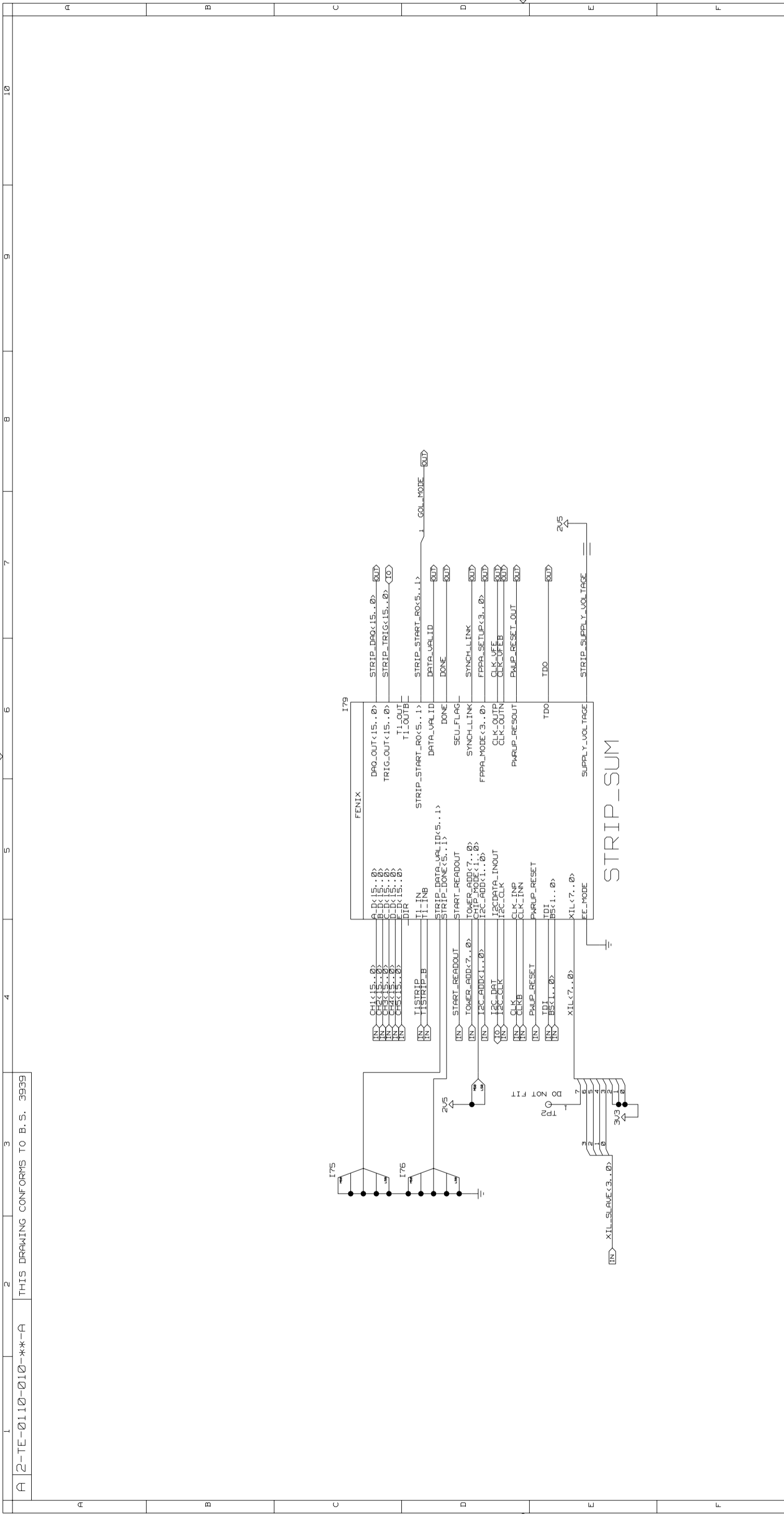
10 9 8 7 6 5 4 3 2 1



A	23-03-2005	DATE	-----	M. HANSEN	M. HANSEN	APPD.	STATUS
ISSUE		MOD NO.	DRN BY.	CHKD.	CCLRC 2005		
USED ON: CMS ECAL							
CCLRC RUTHERFORD APPLETON LABORATORY, CHILTON, OXON OX11 0QX. COUNCIL FOR THE CENTRAL LABORATORY OF THE RESEARCH COUNCILS							
TITLE: PC3270M				CIRCUIT			
FENIX FRONT END BOARD - END CAP				A2-TE-0110-010-(4-8)-A			
							TOTAL NO. OF SHEETS 29

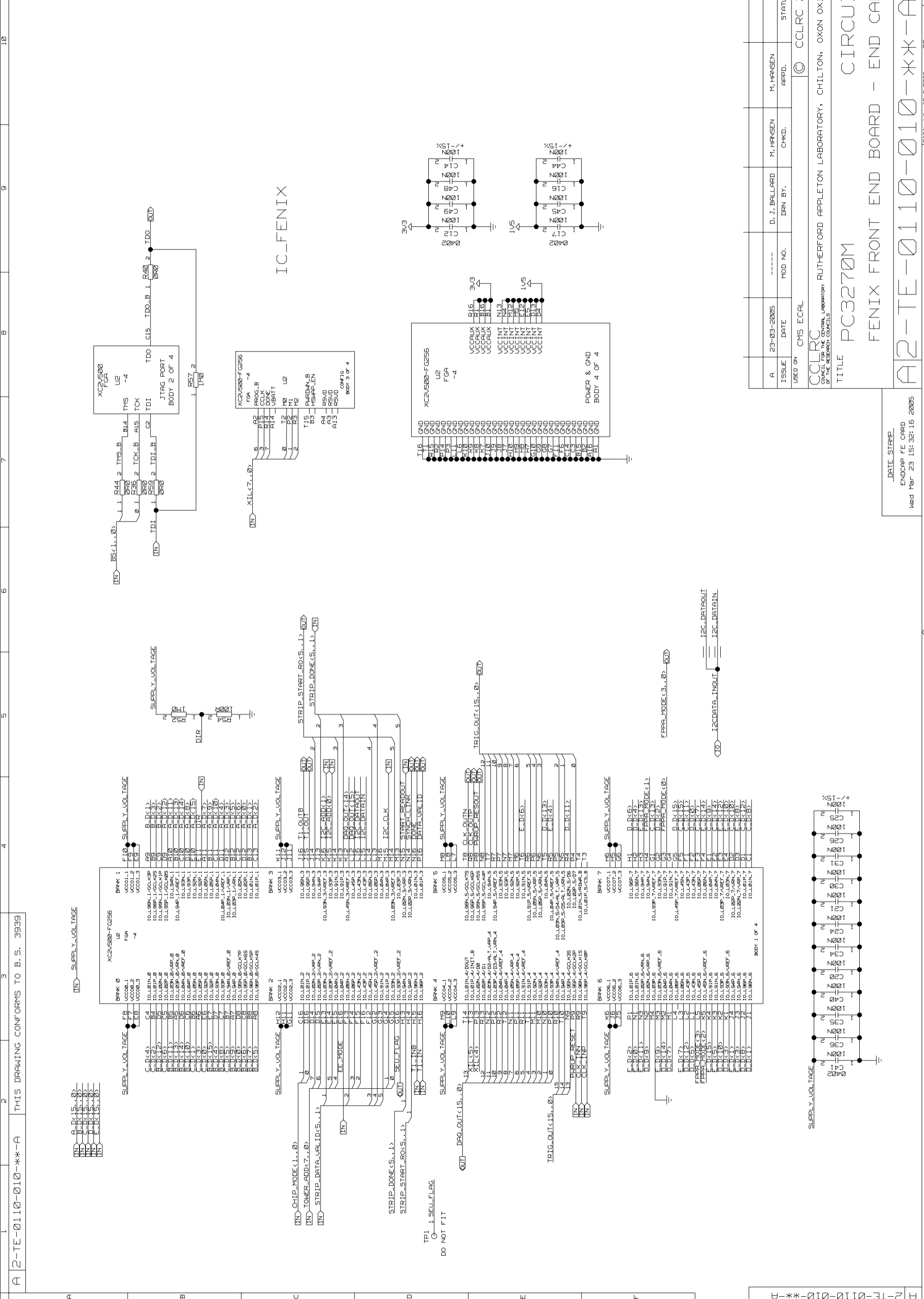
A 12-TE-0110-010-(4-8)-A





DATE STAMP  
ENDCAP FE CARD  
Wed Mar 23 15:32:05 2005

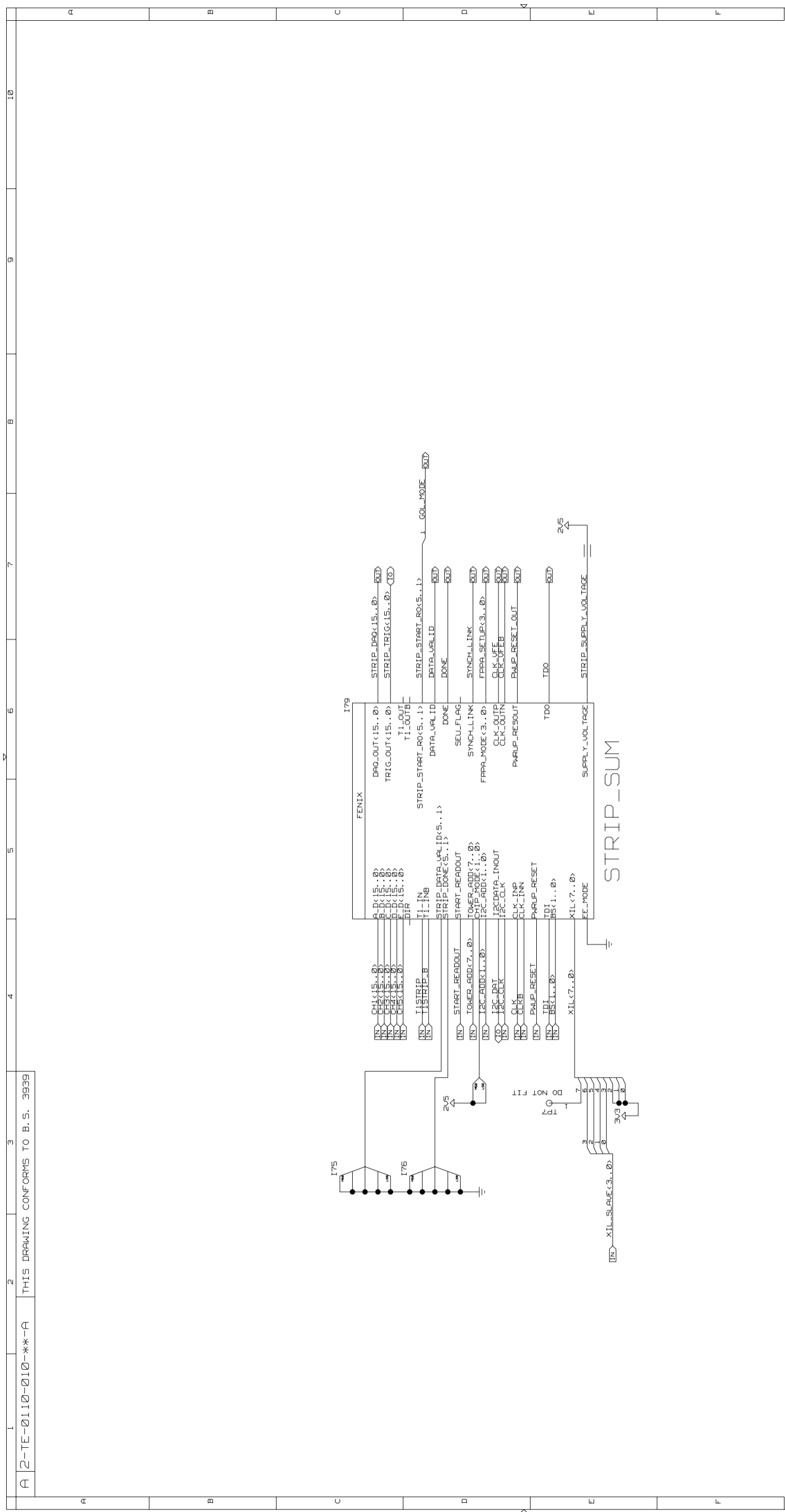
A	23-03-2005	DATE	-----	D. J. BALLARD	M. HANSEN	M. HANSEN	
	ISSUE	MOD NO.	DRN BY.	CHKD.	APPD.	STATUS	
USED ON							© CCLRC 2005
CCLRC COUNCIL FOR THE CENTRAL LABORATORY OF THE RESEARCH COUNCILS							RUTHERFORD APPLETON LABORATORY, CHILTON, OXON OX11 0QX.
TITLE							PC3270M FENIX FRONT END BOARD - END CAP
A2-TE-0110-010-**-A							TOTAL NO. OF SHEETS 29



A	23-03-2005	DATE	D. J. BALLARD	DRN BY.	M. HANSEN	CHKD.	M. HANSEN	APPD.	STATUS
USED ON: CMS ECAL									
© CCLRC 2005									
CCLRC RUTHERFORD APPLETON LABORATORY, CHILTON, OXON OX11 0QX. COUNCIL FOR THE CENTRAL LABORATORY OF THE RESEARCH COUNCILS									
TITLE: PC3270M									
FENIX FRONT END BOARD - END CAP									
A2-TE-0110-010-**-A									

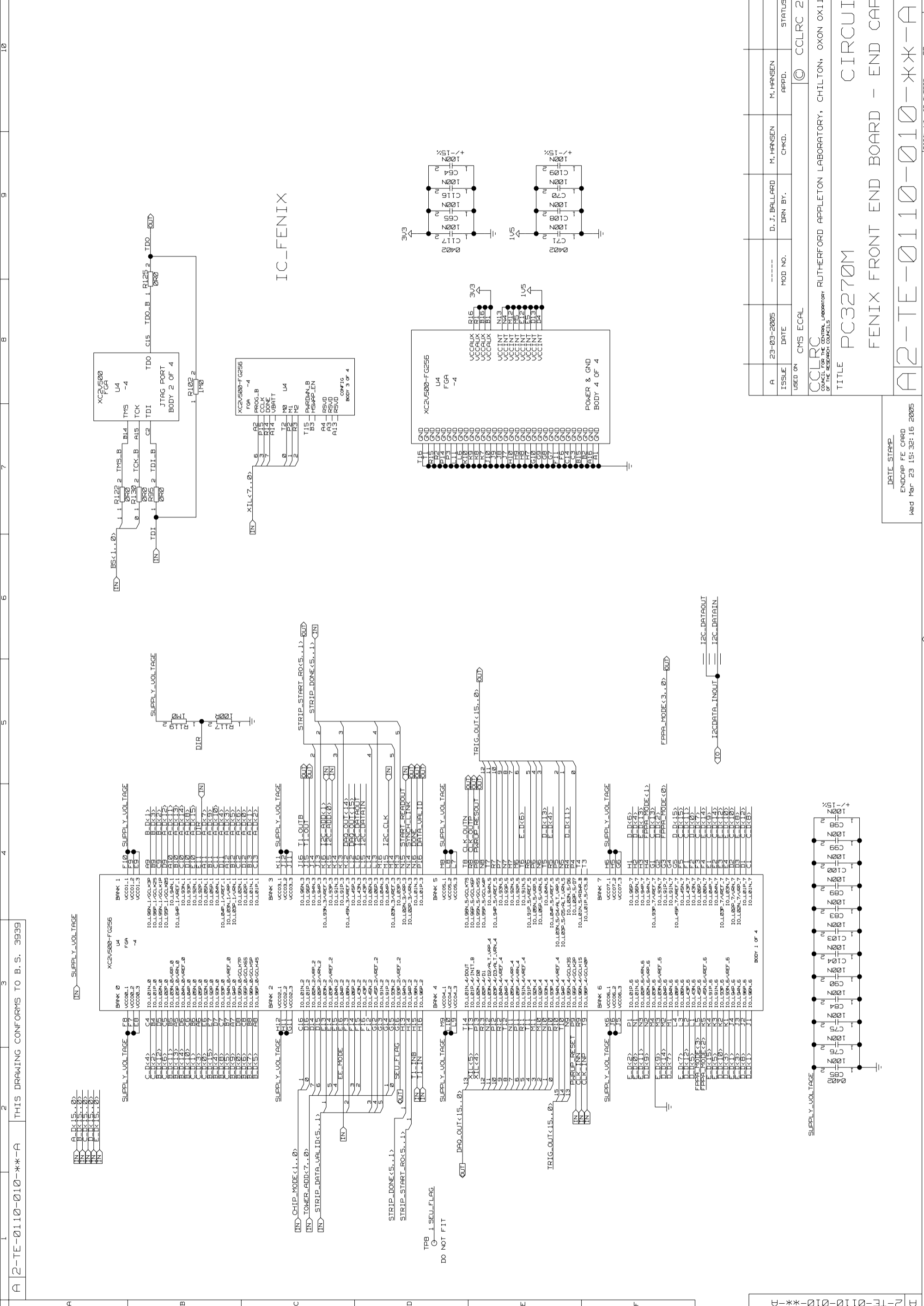
DATE STAMP:  
ENDCAP FE CARD  
Wed Mar 23 15:32:16 2005

TOTAL NO. OF SHEETS: 29									
-------------------------	--	--	--	--	--	--	--	--	--



A	23-03-2005	DATE	-----	D. J. BALLARD	M. HANSEN	M. HANSEN	
	ISSUE	MOD NO.	DRN BY.	CHKD.	APPD.	STATUS	
USED ON							© CCLRC 2005
CCLRC COUNCIL FOR THE CENTRAL LABORATORY OF THE RESEARCH COUNCILS							RUTHERFORD APPLETON LABORATORY, CHILTON, OXON OX11 0QX.
TITLE							PC3270M
							CIRCUIT
							FENIX FRONT END BOARD - END CAP
A2-TE-0110-010-**-A							

DATE STAMP  
ENDCAP FE CARD  
Wed Mar 23 15:32:05 2005

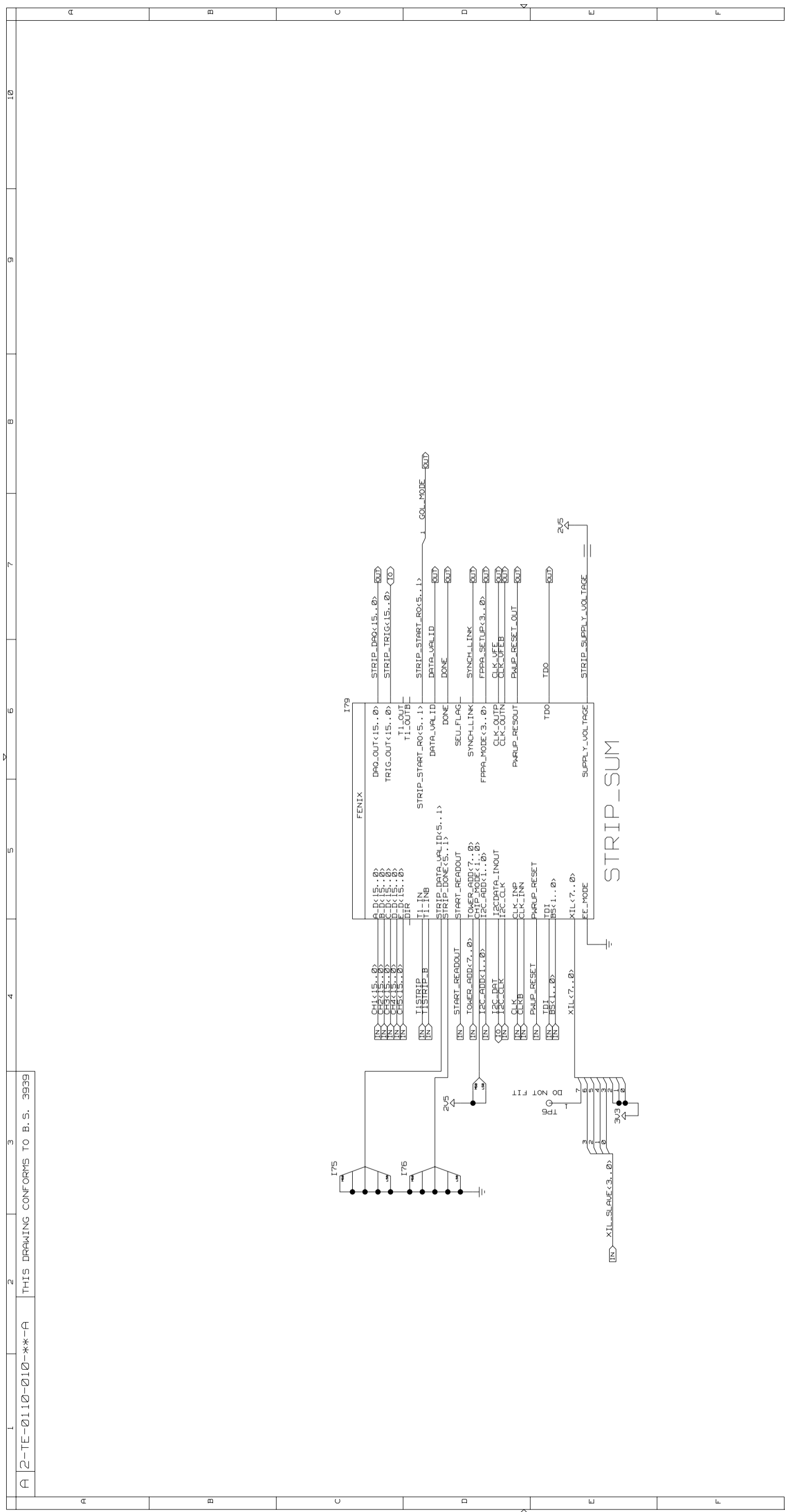


A 2-TE-0110-010-\*\*-A THIS DRAWING CONFORMS TO B. S. 3939

ISSUE	A	23-03-2005	DATE	MOD NO.	-----	D. J. BALLARD	DRN BY.	M. HANSEN	CHKD.	M. HANSEN	APPD.	STATUS
USED ON	CMS ECAL											
CCLRC COUNCIL FOR THE CENTRAL LABORATORY OF THE RESEARCH COUNCILS												
RUTHERFORD APPLETON LABORATORY, CHILTON, OXON OX11 0QX.												
TITLE PC3270M FENIX FRONT END BOARD - END CAP												
A2-TE-0110-010-**-A												

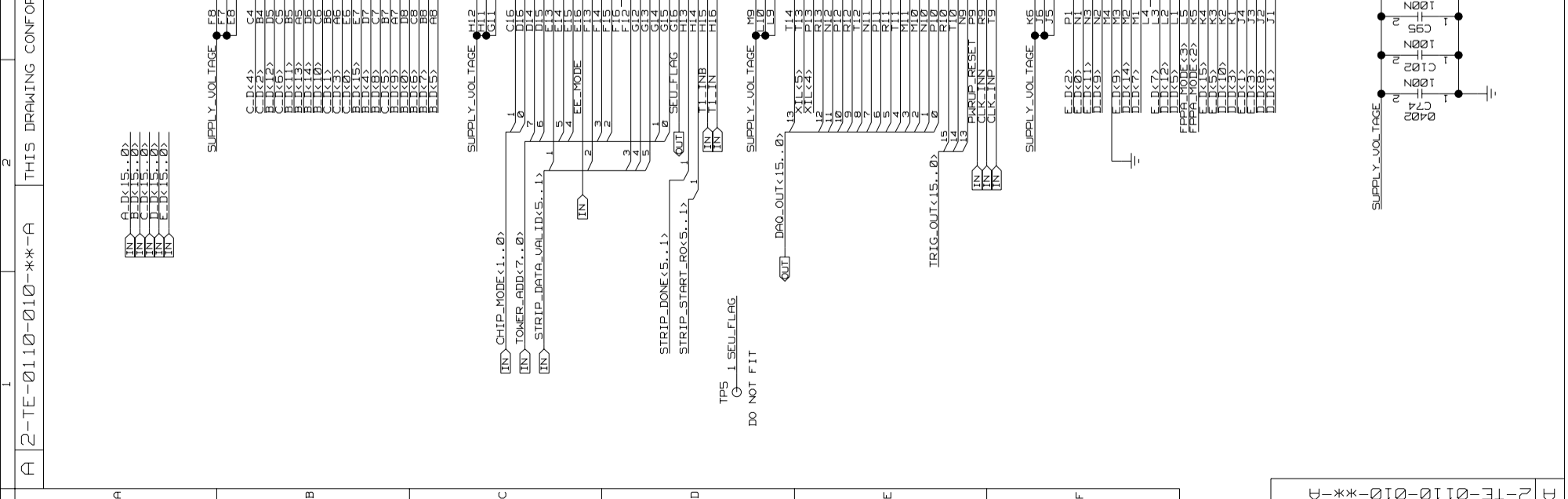
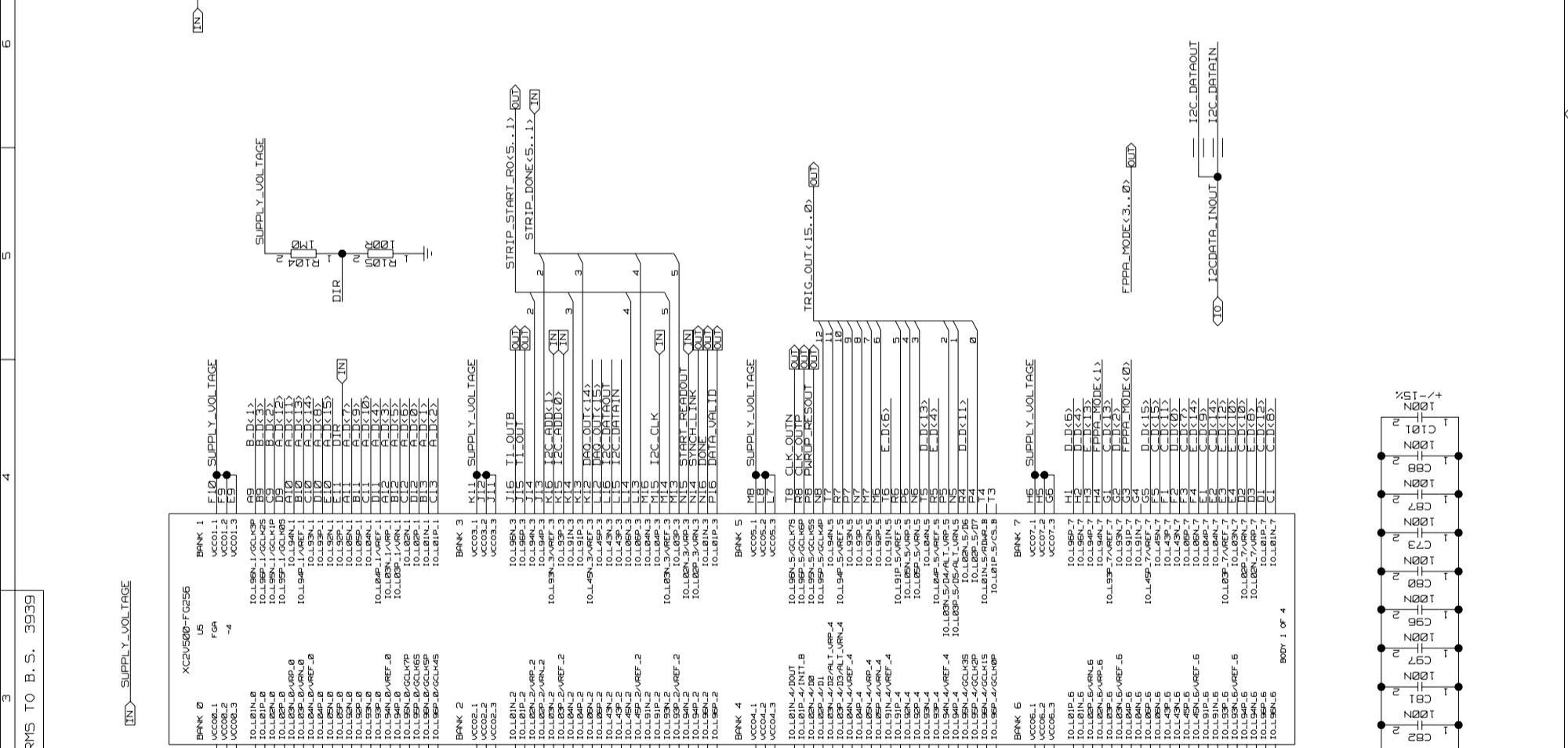
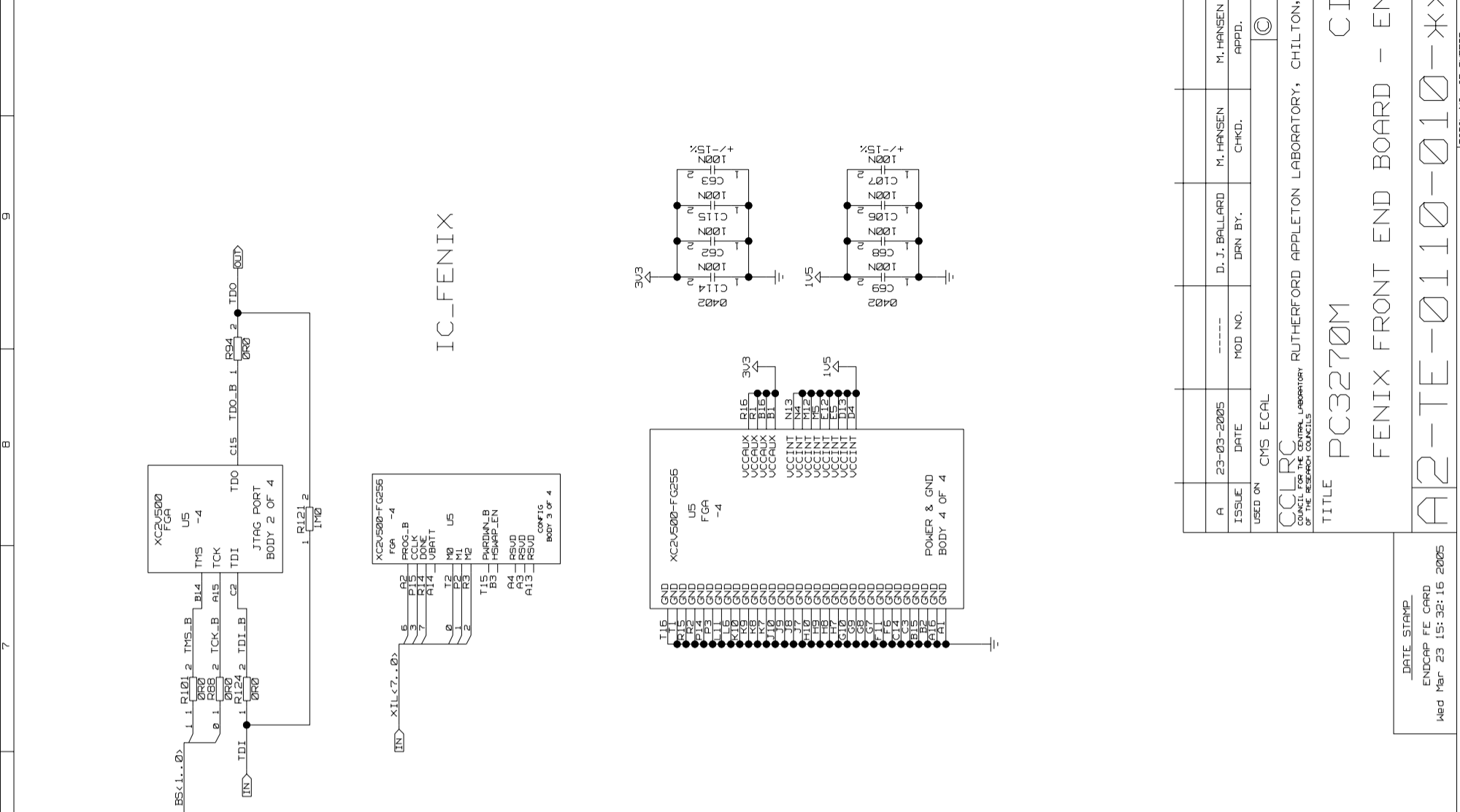
DATE STAMP  
 END CAP FE CARD  
 Wed Mar 23 15:32:16 2005

TOTAL NO. OF SHEETS 29



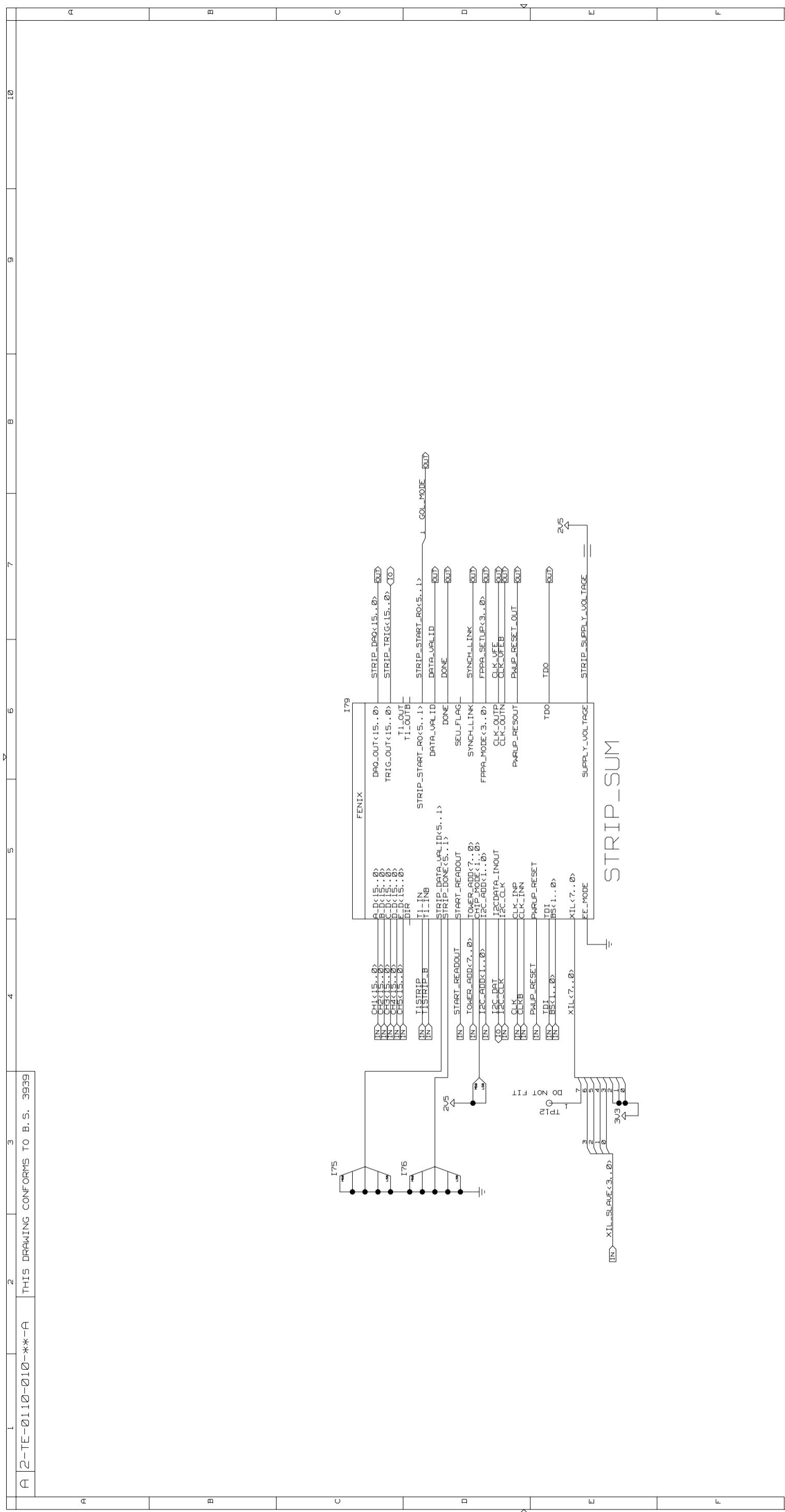
A	23-03-2005	DATE	-----	D. J. BALLARD	M. HANSEN	M. HANSEN	
	ISSUE	MOD NO.	DRN BY.	CHKD.	APPD.	STATUS	
USED ON							© CCLRC 2005
CCLRC COUNCIL FOR THE CENTRAL LABORATORY OF THE RESEARCH COUNCILS							RUTHERFORD APPLETON LABORATORY, CHILTON, OXON OX11 0QX.
TITLE							PC3270M
							CIRCUIT
							FENIX FRONT END BOARD - END CAP
A2-TE-0110-010-**-A							

DATE STAMP  
ENDCAP FE CARD  
Wed Mar 23 15:32:05 2005



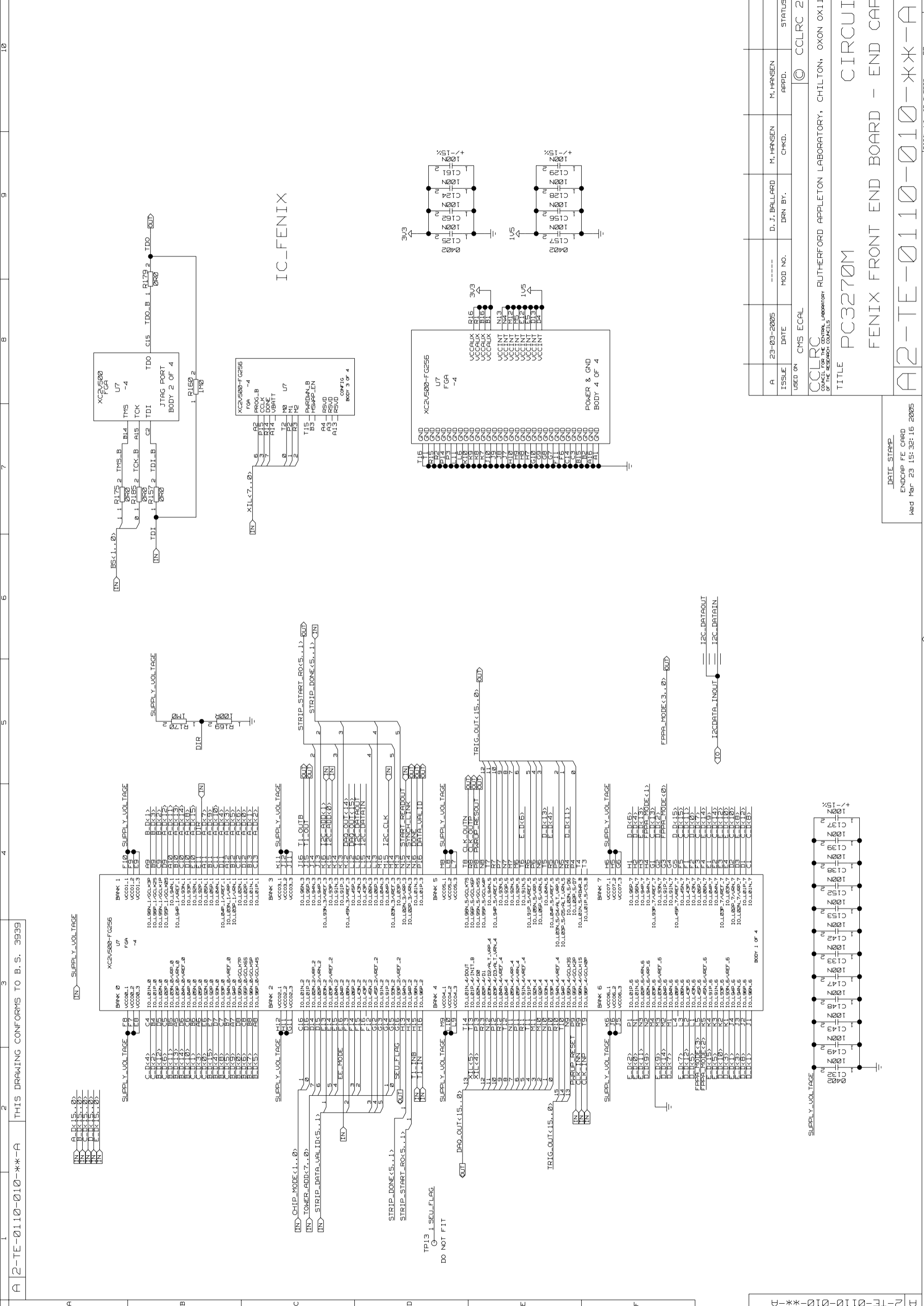
DATE STAMP  
ENDCAP FE CARD  
Wed Mar 23 15:32:16 2005

A	23-03-2005	DATE	M. HANSEN	DRN BY.	M. HANSEN	APPD.	STATUS
USED ON CMS ECAL							
© CCLRC 2005							
CCLRC RUTHERFORD APPLETON LABORATORY, CHILTON, OXON OX11 0QX.							
TITLE PC3270M							
FENIX FRONT END BOARD - END CAP							
A2-TE-0110-010-**-A							



A	23-03-2005	DATE	-----	D. J. BALLARD	M. HANSEN	M. HANSEN	
ISSUE	DATE	MOD NO.	DRN BY.	CHKD.	APPD.	STATUS	
USED ON							© CCLRC 2005
CCLRC COUNCIL FOR THE CENTRAL LABORATORY OF THE RESEARCH COUNCILS							RUTHERFORD APPLETON LABORATORY, CHILTON, OXON OX11 0QX.
TITLE							PC3270M FENIX FRONT END BOARD - END CAP
A2-TE-0110-010-**-A							TOTAL NO. OF SHEETS 29

DATE STAMP  
ENDCAP FE CARD  
Wed Mar 23 15:32:05 2005



A 2-TE-0110-010-\*\*-\*-A THIS DRAWING CONFORMS TO B. S. 3939

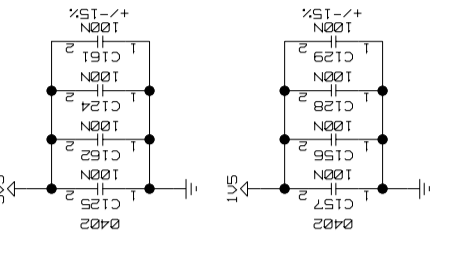
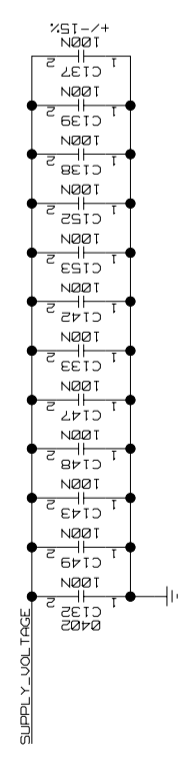
DATE STAMP  
ENDCAP FE CARD  
Wed Mar 23 15:32:16 2005

TITLE  
PC3270M  
FENIX FRONT END BOARD - END CAP

A 2-TE-0110-010-\*\*-\*-A

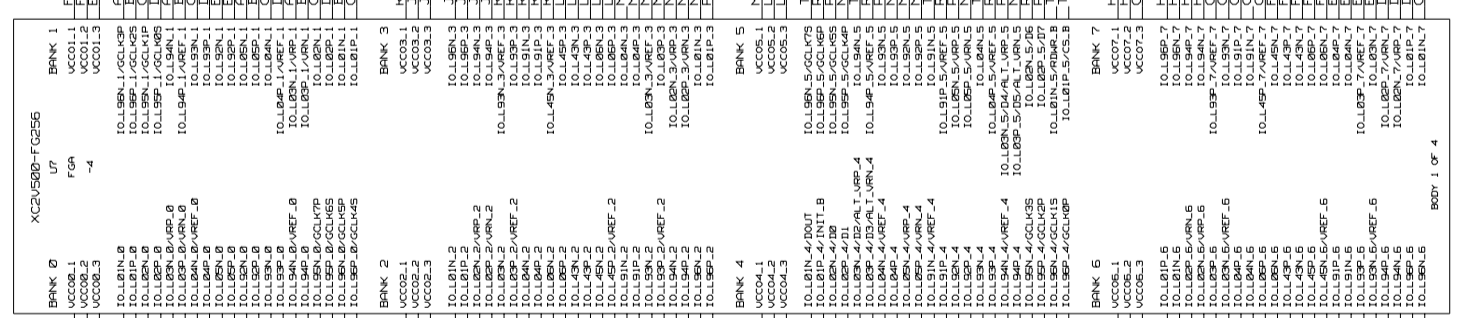
TOTAL NO. OF SHEETS 29

ISSUE	A	23-03-2005	DATE	MOD NO.	-----	D. J. BALLARD	DRN BY.	M. HANSEN	CHKD.	M. HANSEN	APPD.	STATUS
USED ON	CMS ECAL											
© CCLRC 2005												
CCLRC RUTHERFORD APPLETON LABORATORY, CHILTON, OXON OX11 0QX. COUNCIL FOR THE CENTRAL LABORATORY OF THE RESEARCH COUNCILS												

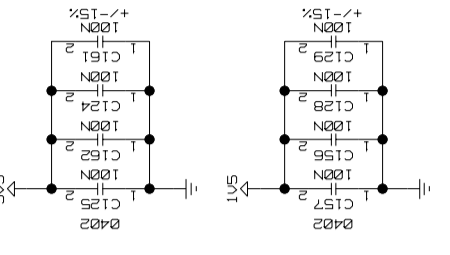
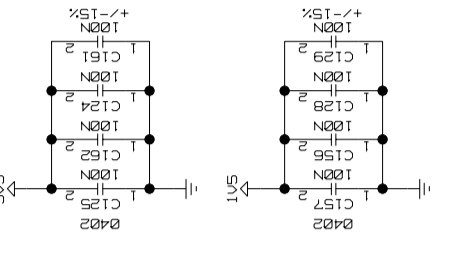
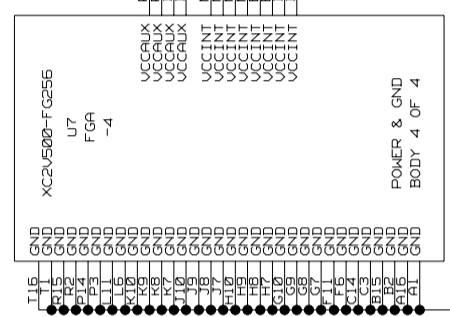
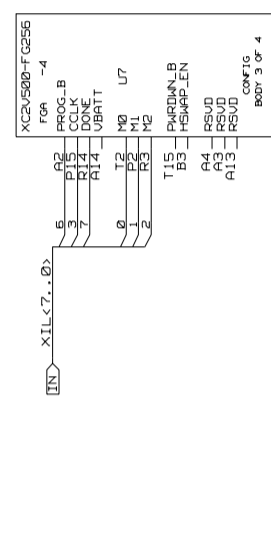
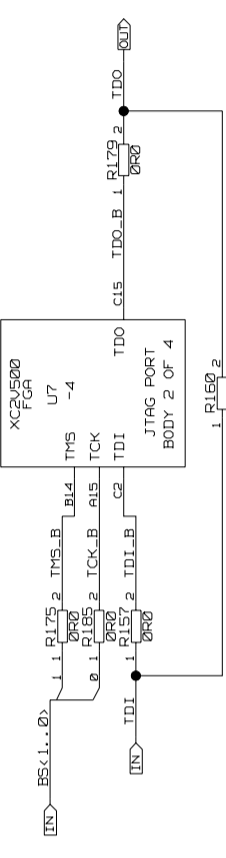
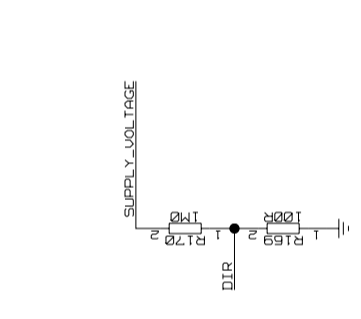


IC\_FENIX

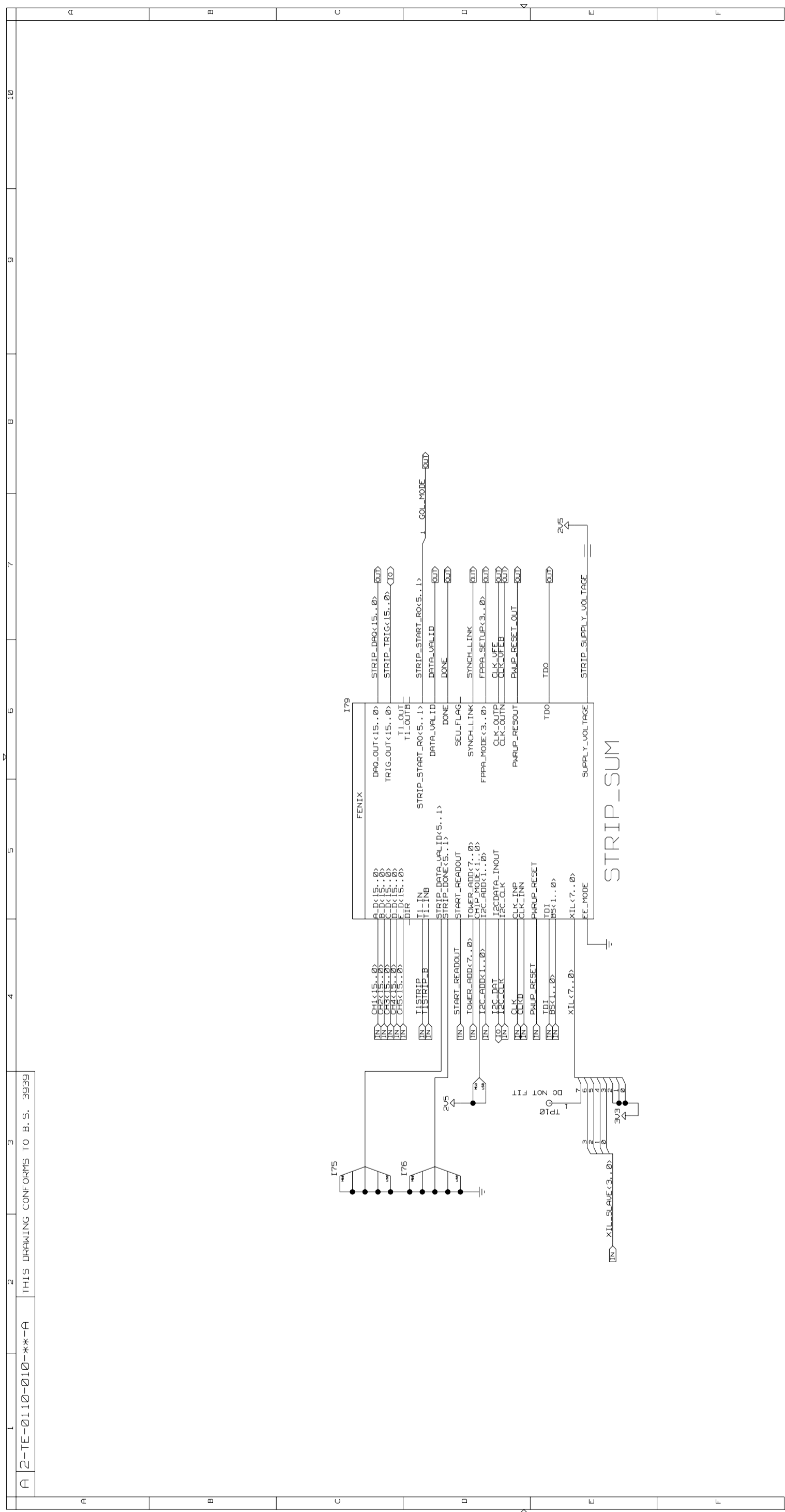
SUPPLY\_VOLTAGE



SUPPLY\_VOLTAGE

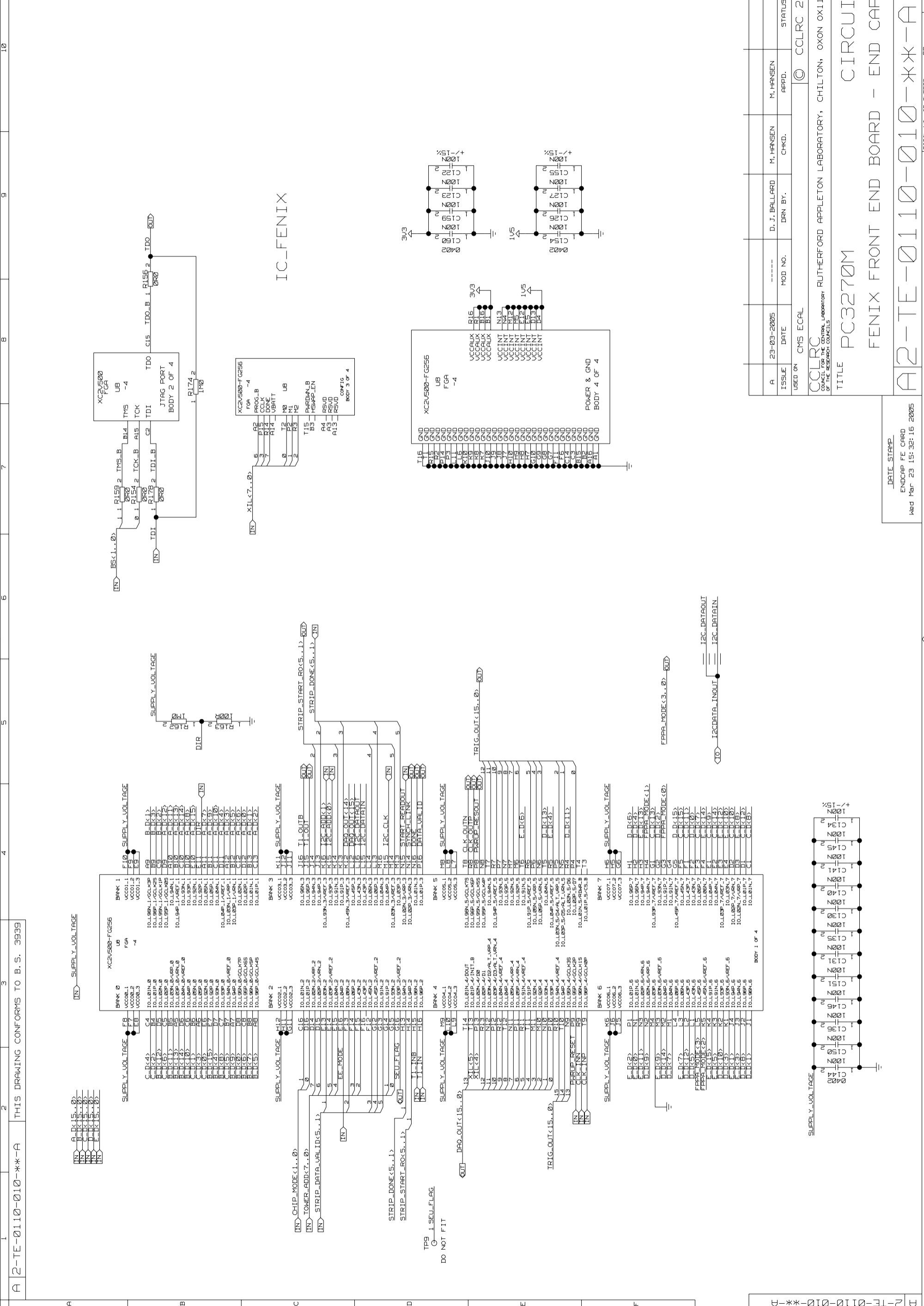






A	23-03-2005	DATE	-----	D. J. BALLARD	M. HANSEN	M. HANSEN	
ISSUE	DATE	MOD NO.	DRN BY.	CHKD.	APPD.	STATUS	
USED ON							© CCLRC 2005
CCLRC COUNCIL FOR THE CENTRAL LABORATORY OF THE RESEARCH COUNCILS							RUTHERFORD APPLETON LABORATORY, CHILTON, OXON OX11 0QX.
TITLE							PC3270M FENIX FRONT END BOARD - END CAP CIRCUIT
A2-TE-0110-010-**-A							TOTAL NO. OF SHEETS 29

DATE STAMP  
ENDCAP FE CARD  
Wed Mar 23 15:32:05 2005



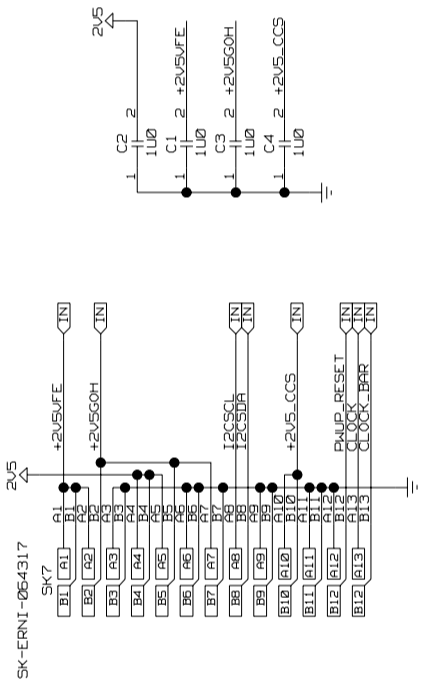
A 2-TE-0110-010-\*\*-A THIS DRAWING CONFORMS TO B. S. 3939

ISSUE	A	23-03-2005	DATE	MOD NO.	-----	D. J. BALLARD	M. HANSEN	DRN BY.	CHKD.	M. HANSEN	APPD.	STATUS
USED ON	CMS ECAL											
CCLRC COUNCIL FOR THE CENTRAL LABORATORY OF THE RESEARCH COUNCILS												
RUTHERFORD APPLETON LABORATORY, CHILTON, OXON OX11 0QX.												
TITLE PC3270M FENIX FRONT END BOARD - END CAP												
A2-TE-0110-010-**-A												

DATE STAMP  
 END CAP FE CARD  
 Wed Mar 23 15:32:16 2005

© CCLRC 2005												
TOTAL NO. OF SHEETS 29												

A 12-TE-0110-010-19-A 2 THIS DRAWING CONFORMS TO B. S. 3939

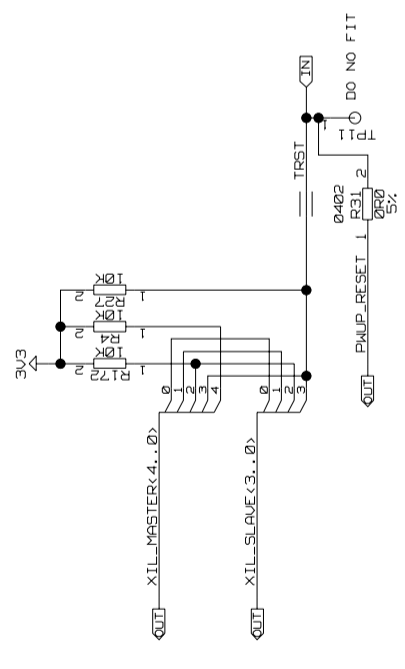


POWER

A	23-03-2005	DATE	-----	D. J. BALLARD	M. HANSEN	M. HANSEN			
	ISSUE	MOD NO.	DRN BY.	CHKD.	APPD.	STATUS			
USED ON							© CCLRC 2005		
CCLRC							RUTHERFORD APPLETON LABORATORY, CHILTON, OXON OX11 00X.		
COUNCIL FOR THE CENTRAL LABORATORY OF THE RESEARCH COUNCILS									
TITLE							PC3270M	CIRCUIT	
							FENIX FRONT END BOARD - END CAP		
A2-TE-0110-010-19-A									

DATE STAMP  
ENDCAP FE CARD  
Wed Mar 23 15:32:29 2005

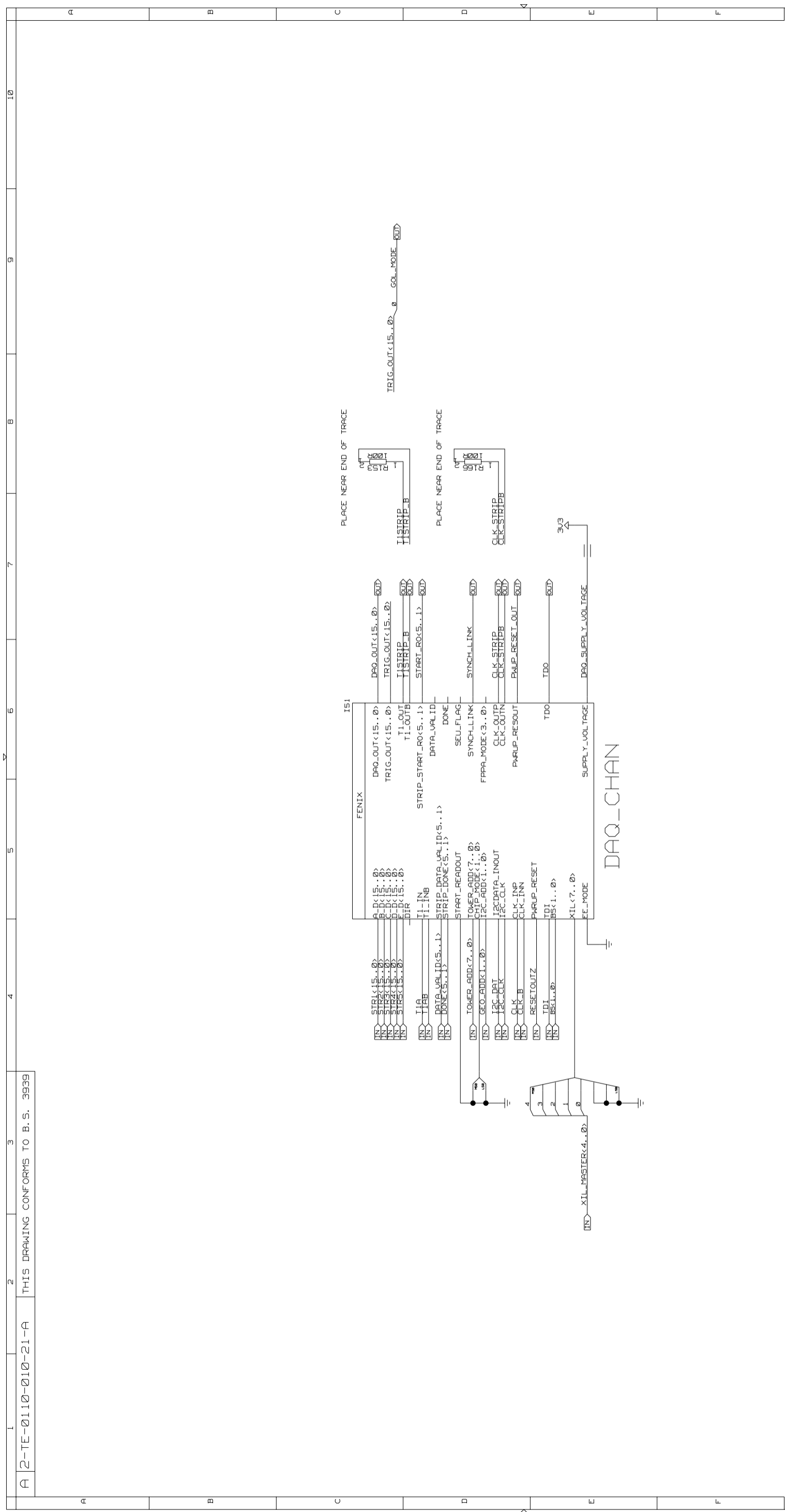
XIL<4..0> BUS AS FOLLOWS:  
 0 CCLK  
 1 DIN  
 2 INIT  
 3 PROG  
 4 DONE



XIL\_LOADING

DATE STAMP  
 ENDCAP FE CARD  
 Wed Mar 23 15:32:38 2005

A	23-03-2005	DATE	-----	M. HANSEN	M. HANSEN					
	ISSUE	DATE	MOD NO.	DRN BY.	CHKD.	APPD.	STATUS			
USED ON CMS ECAL © CCLRC 2005										
CCLRC RUTHERFORD APPLETON LABORATORY, CHILTON, OXON OX11 0QX. <small>COUNCIL FOR THE CENTRAL LABORATORY OF THE RESEARCH COUNCILS</small>										
TITLE PC3270M CIRCUIT										
FENIX FRONT END BOARD - END CAP										
A2-TE-0110-010-20-A										

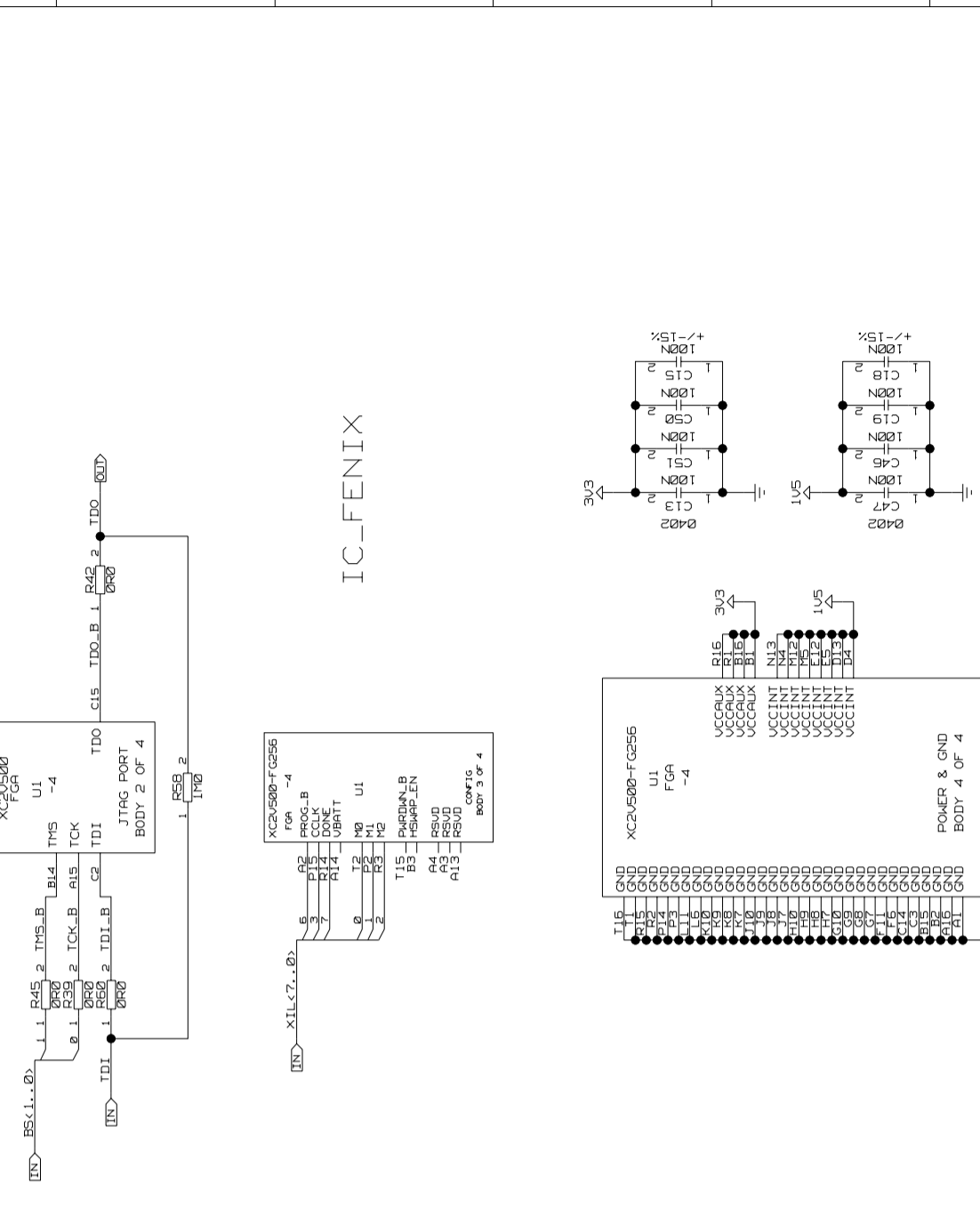
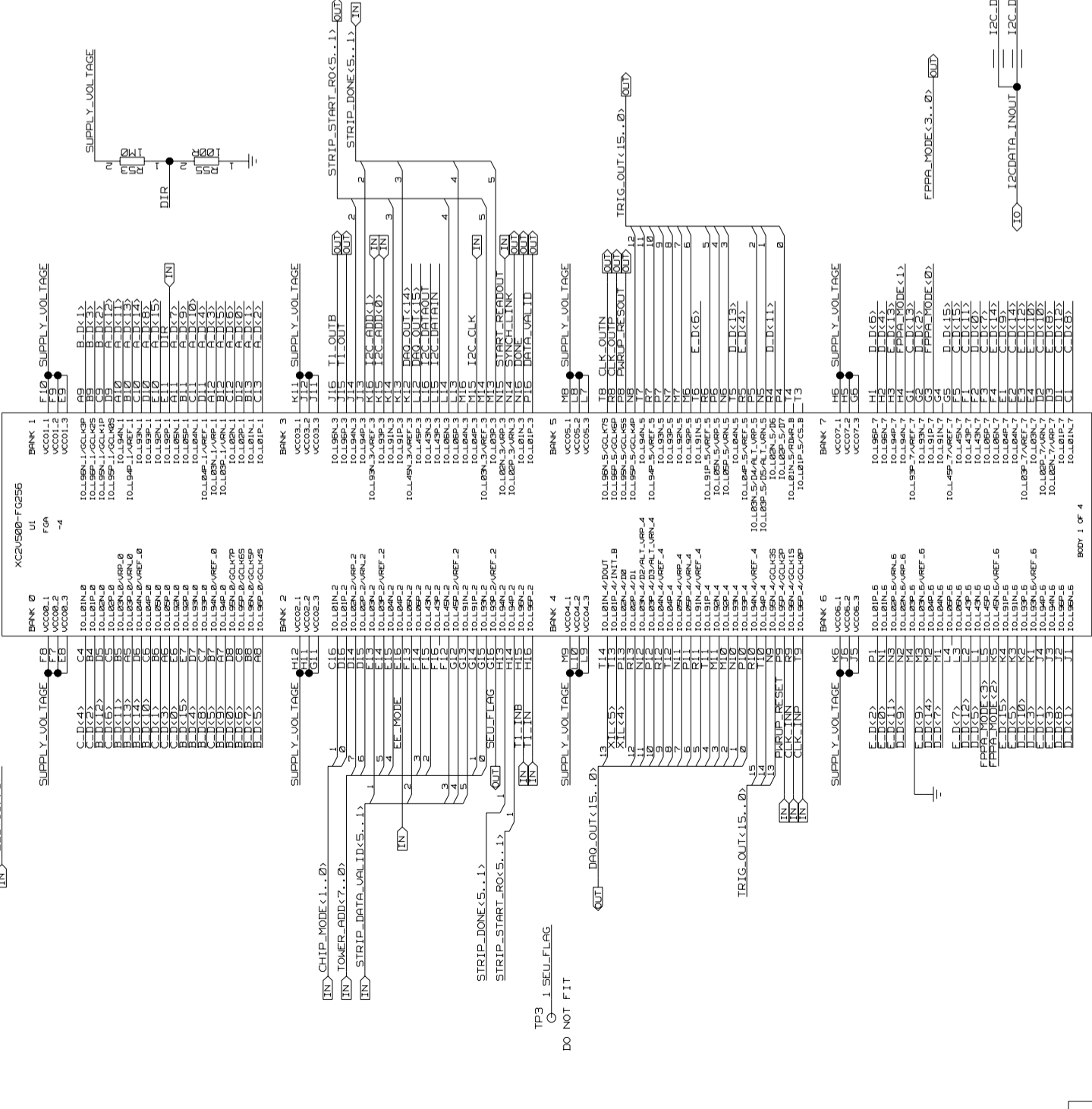


A	23-03-2005	DATE	-----	D. J. BALLARD	M. HANSEN	M. HANSEN	
ISSUE		MOD NO.		DRN BY.	CHKD.	APPD.	STATUS
USED ON	CMS ECAL						
© CCLRC 2005							
CCLRC COUNCIL FOR THE CENTRAL LABORATORY OF THE RESEARCH COUNCILS							
RUTHERFORD APPLETON LABORATORY, CHILTON, OXON OX11 0QX.							
TITLE PC3270M							
CIRCUIT							
FENIX FRONT END BOARD - END CAP							
A2-TE-0110-010-21-A							

DATE STAMP  
ENDCAP FE CARD  
Wed Mar 23 15:32:51 2005

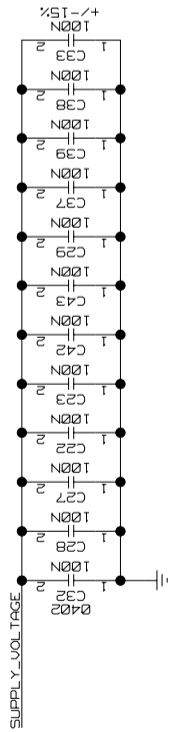
IN BK15.0  
IN BK15.0  
IN BK15.0  
IN BK15.0

IN SUPPLY\_VOLTAGE  
IN SUPPLY\_VOLTAGE  
IN SUPPLY\_VOLTAGE  
IN SUPPLY\_VOLTAGE



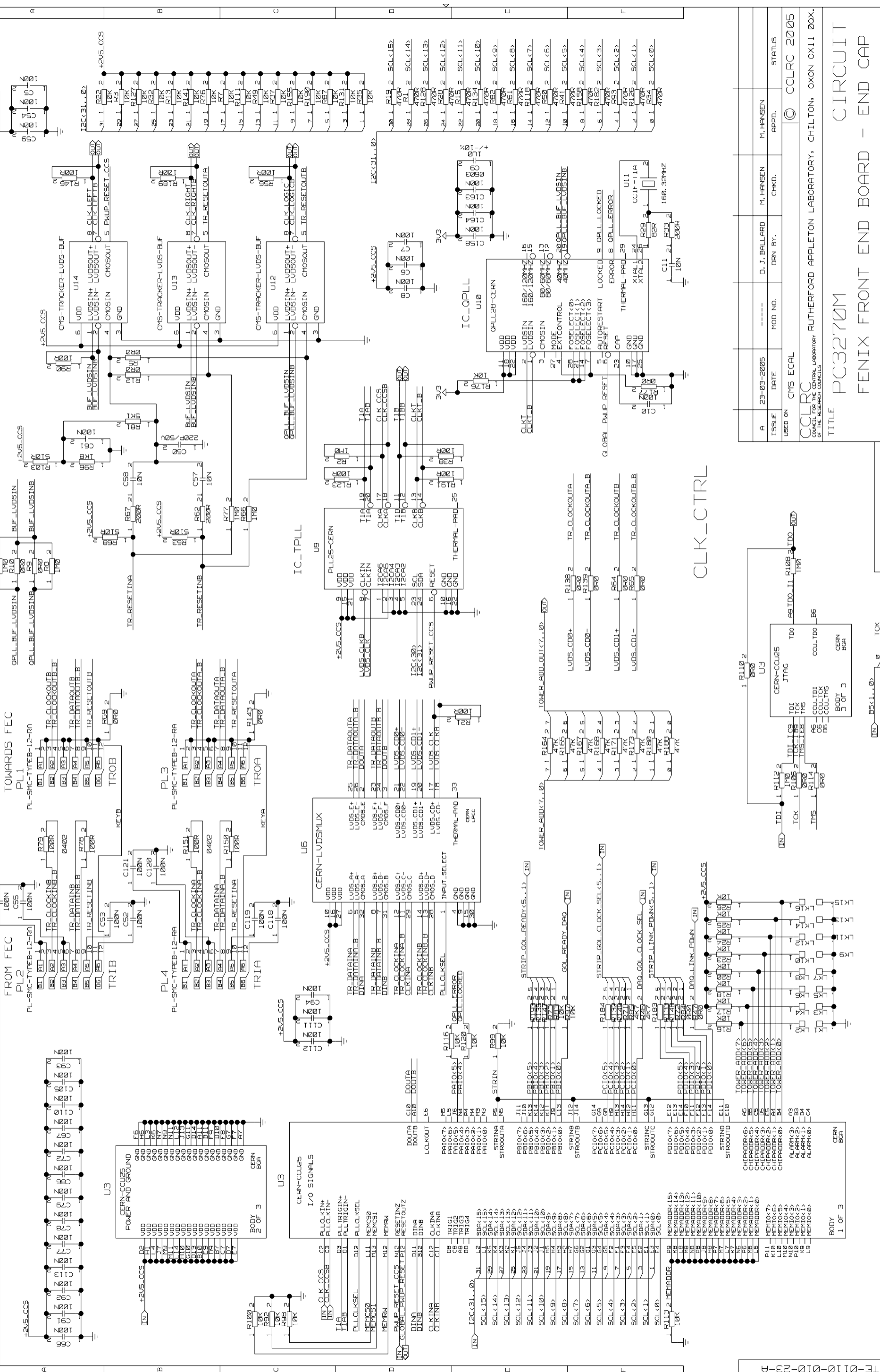
A	23-03-2005	DATE	D. J. BALLARD	DRN BY.	M. HANSEN	CHKD.	M. HANSEN	APPD.	STATUS
USED ON CMS ECAL									
© CCLRC 2005									
CCLRC RUTHERFORD APPLETON LABORATORY, CHILTON, OXON OX11 00X. COUNCIL FOR THE CENTRAL LABORATORY OF THE RESEARCH COUNCILS									
TITLE PC3270M									
FENIX FRONT END BOARD - END CAP									
A2-TE-0110-010-**-A									

DATE STAMP  
ENDCAP FE CARD  
Wed Mar 23 15:32:16 2005



A 2-TE-0110-010-23-A THIS DRAWING CONFORMS TO B.S. 3939

10 9 8 7 6 5 4 3 2 1



ISSUE	DATE	MOD NO.	DRN BY.	CHKD.	STATUS
A	23-03-2005	-----	D. J. BALLARD	M. HANSEN	APPD.

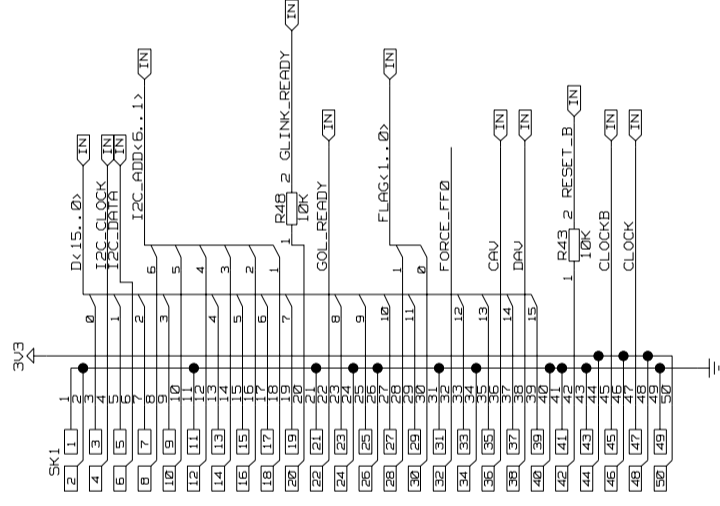
USED ON: CERN ECAL

© CCLRC 2005

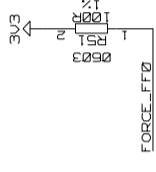
RUTHRFORD APPLETON LABORATORY, CHILTON, OXON OX11 0QX.				
TITLE PC3270M				
FENIX FRONT END BOARD - END CAP				
A 2-TE-0110-010-23-A				
TOTAL NO. OF SHEETS 29				

DATE STAMP: Wed Mar 23 15:33:05 2005

A 12-TE-0110-010-(24-29)-A THIS DRAWING CONFORMS TO B. S. 3939



NAIS GOL CONNECTOR



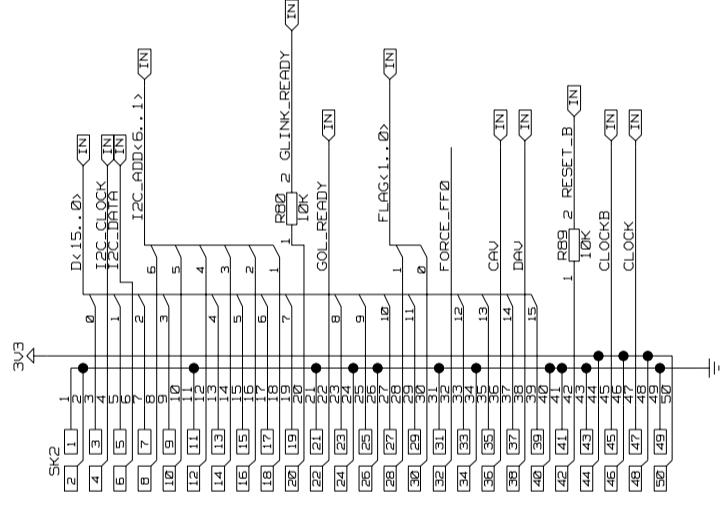
OPTO\_CHAN

A	23-03-2005	DATE	-----	D. J. BALLARD	M. HANSEN	M. HANSEN	
ISSUE	DATE	MOD NO.	DRN BY.	CHKD.	APPD.	STATUS	
USED ON							© CCLRC 2005
CCLRC RUTHERFORD APPLETON LABORATORY, CHILTON, OXON OX11 0QX.							
COUNCIL FOR THE CENTRAL LABORATORY OF THE RESEARCH COUNCILS							
TITLE							CIRCUIT
PC3270M							
FENIX FRONT END BOARD - END CAP							
A2-TE-0110-010-(24-29)-A							

DATE STAMP  
ENDCAP FE CARD  
Wed Mar 23 15:35:30 2005



A 12-TE-0110-010-(24-29)-A THIS DRAWING CONFORMS TO B. S. 3939



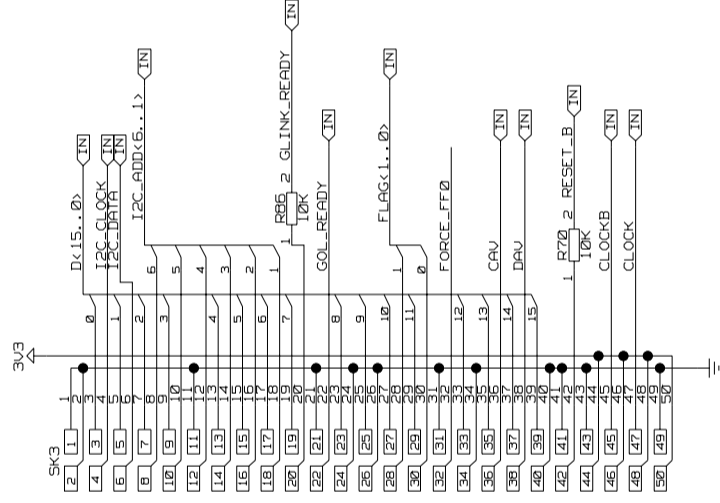
NAIS GOL CONNECTOR

OPTO\_CHAN

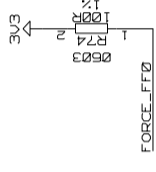
A	23-03-2005	DATE	-----	D. J. BALLARD	M. HANSEN	M. HANSEN	
ISSUE	DATE	MOD NO.	DRN BY.	CHKD.	APPD.	STATUS	
USED ON							© CCLRC 2005
CCLRC RUTHERFORD APPLETON LABORATORY, CHILTON, OXON OX11 00X. COUNCIL FOR THE CENTRAL LABORATORY OF THE RESEARCH COUNCILS							
TITLE							CIRCUIT
PC3270M							FENIX FRONT END BOARD - END CAP
A2-TE-0110-010-(24-29)-A							

DATE STAMP  
ENDCAP FE CARD  
Wed Mar 23 15:35:30 2005

A 12-TE-0110-010-(24-29)-A THIS DRAWING CONFORMS TO B. S. 3939



NAIS GOL CONNECTOR

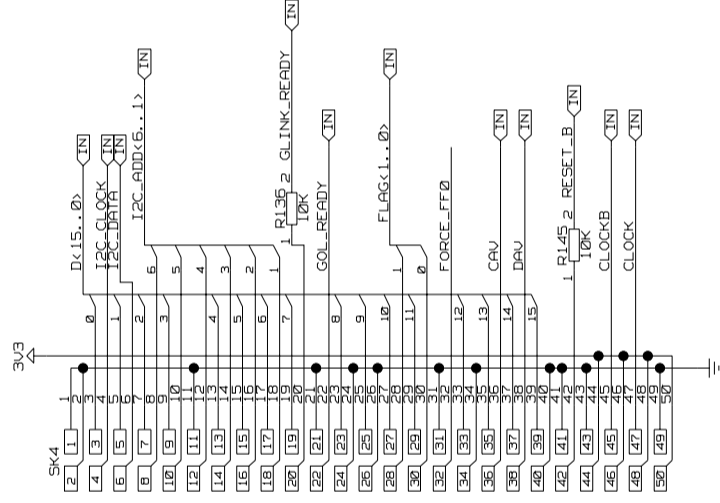


OPTO\_CHAN

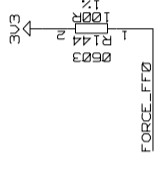
A	23-03-2005	DATE	-----	D. J. BALLARD	M. HANSEN	M. HANSEN	
ISSUE	DATE	MOD NO.	DRN BY.	CHKD.	APPD.	STATUS	
USED ON							© CCLRC 2005
CCLRC RUTHERFORD APPLETON LABORATORY, CHILTON, OXON OX11 00X.							
COUNCIL FOR THE CENTRAL LABORATORY OF THE RESEARCH COUNCILS							
TITLE							CIRCUIT
PC3270M							FENIX FRONT END BOARD - END CAP
A2-TE-0110-010-(24-29)-A							

DATE STAMP  
ENDCAP FE CARD  
Wed Mar 23 15:35:30 2005

A 12-TE-0110-010-(24-29)-A THIS DRAWING CONFORMS TO B. S. 3939



NAIS GOL CONNECTOR

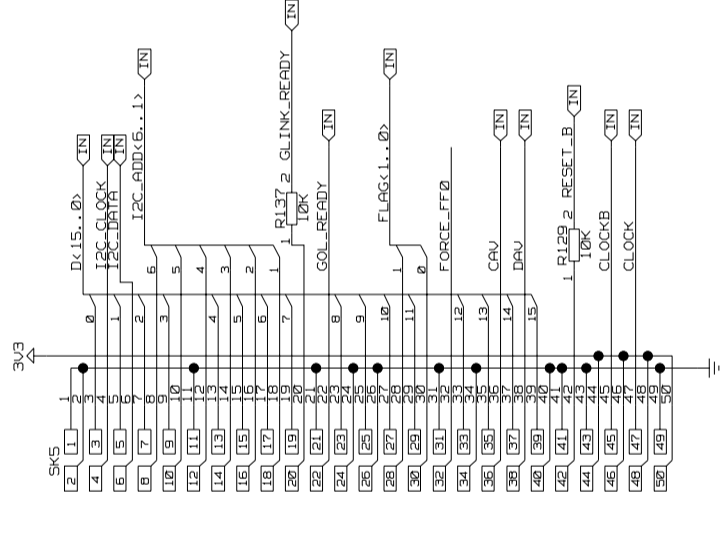


OPTO\_CHAN

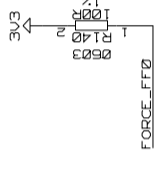
A	23-03-2005	DATE	-----	D. J. BALLARD	M. HANSEN	M. HANSEN	
ISSUE		MOD NO.		DRN BY.	CHKD.	APPD.	STATUS
USED ON							© CCLRC 2005
CCLRC							
COUNCIL FOR THE CENTRAL LABORATORY							
OF THE RESEARCH COUNCILS							
RUTHERFORD APPLETON LABORATORY, CHILTON, OXON OX11 0QX.							
TITLE							
PC3270M							CIRCUIT
FENIX FRONT END BOARD - END CAP							
A2-TE-0110-010-(24-29)-A							

DATE STAMP  
ENDCAP FE CARD  
Wed Mar 23 15:35:30 2005

A 12-TE-0110-010-(24-29)-A THIS DRAWING CONFORMS TO B. S. 3939



NAIS GOL CONNECTOR

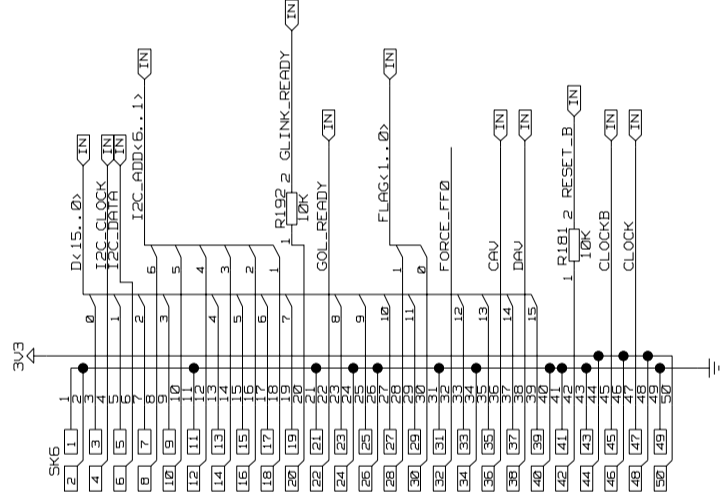


OPTO\_CHAN

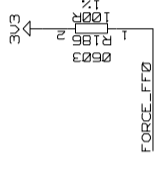
A	23-03-2005	DATE	-----	D. J. BALLARD	M. HANSEN	M. HANSEN		
		ISSUE	MOD NO.	DRN BY.	CHKD.	APPD.	STATUS	
USED ON							CMS ECAL	© CCLRC 2005
<p>CCLRC  <small>COUNCIL FOR THE CENTRAL LABORATORY OF THE RESEARCH COUNCILS</small></p> <p>RUTHERFORD APPLETON LABORATORY, CHILTON, OXON OX11 0QX.</p>								
<p>TITLE PC3270M</p> <p>FENIX FRONT END BOARD - END CAP</p>								
<p>A2-TE-0110-010-(24-29)-A</p>								

DATE STAMP  
 ENDCAP FE CARD  
 Wed Mar 23 15:35:30 2005

A 12-TE-0110-010-(24-29)-A THIS DRAWING CONFORMS TO B. S. 3939



NAIS GOL CONNECTOR



OPTO\_CHAN

A	23-03-2005	DATE	-----	D. J. BALLARD	M. HANSEN	M. HANSEN	
	ISSUE	MOD NO.	DRN BY.	CHKD.	APPD.	STATUS	
USED ON							© CCLRC 2005
CCLRC RUTHERFORD APPLETON LABORATORY, CHILTON, OXON OX11 00X. COUNCIL FOR THE CENTRAL LABORATORY OF THE RESEARCH COUNCILS							
TITLE							CIRCUIT
PC3270M							FENIX FRONT END BOARD - END CAP
A2-TE-0110-010-(24-29)-A							

DATE STAMP  
ENDCAP FE CARD  
Wed Mar 23 15:35:30 2005