



The PPr System : Status and future plans

Major hardware components to be built :

PPr Module (PPM)

Analog Input Board (AIB)	Schematics done
PPrMCM	Prototype ready and tested
PPrASiC	Prototype ready and assembled
LVDS Cable Driver (LCD)	Prototype ready and under test
TCM-PPr Interface	Working option available
	To be done

PPr ROD

Prototype-1 tested

Pipeline Bus Backplane

To be done

... so far most efforts went into MCM / PPrASiC as key components ...



The PPr System : Status and future plans

Latest planning : PPr Module ready end 2002, slice test spring 2003

Reasons for a revised time planning :

Problems in recruiting Ph.D.'s and Post-Doc's

Deadtime due to institute removal much larger than planned (loss for ATLAS estimated 9-12 man months, about 3 - 4 months in real time)

Things will get better due to :

Full professorship for ATLAS will be filled by summer 2003

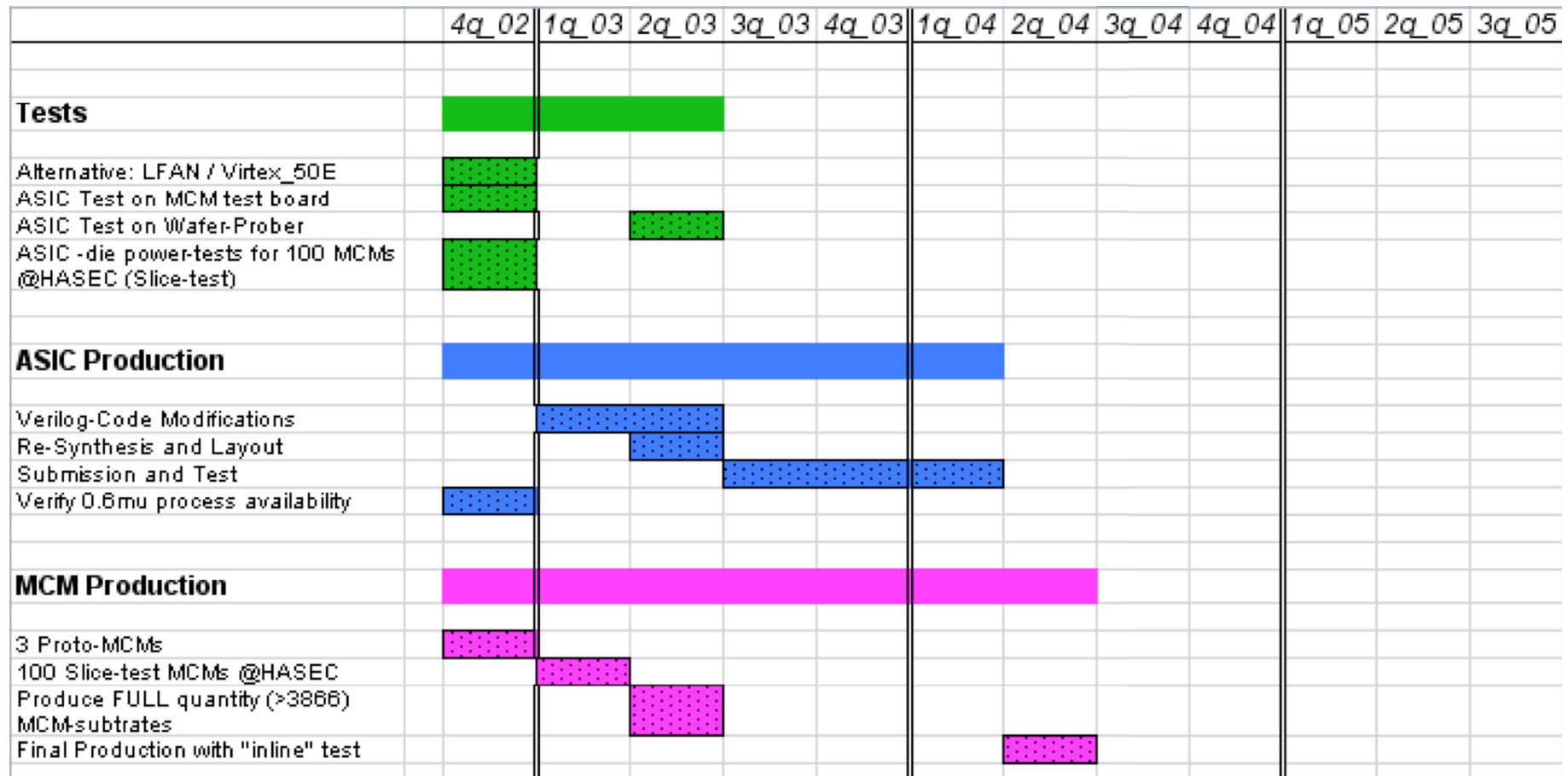
Institute removal will be finished by the end of 2002

Keep trying to find suitable diploma/Ph.D./Post-Doc



The PPr System : Status and future plans

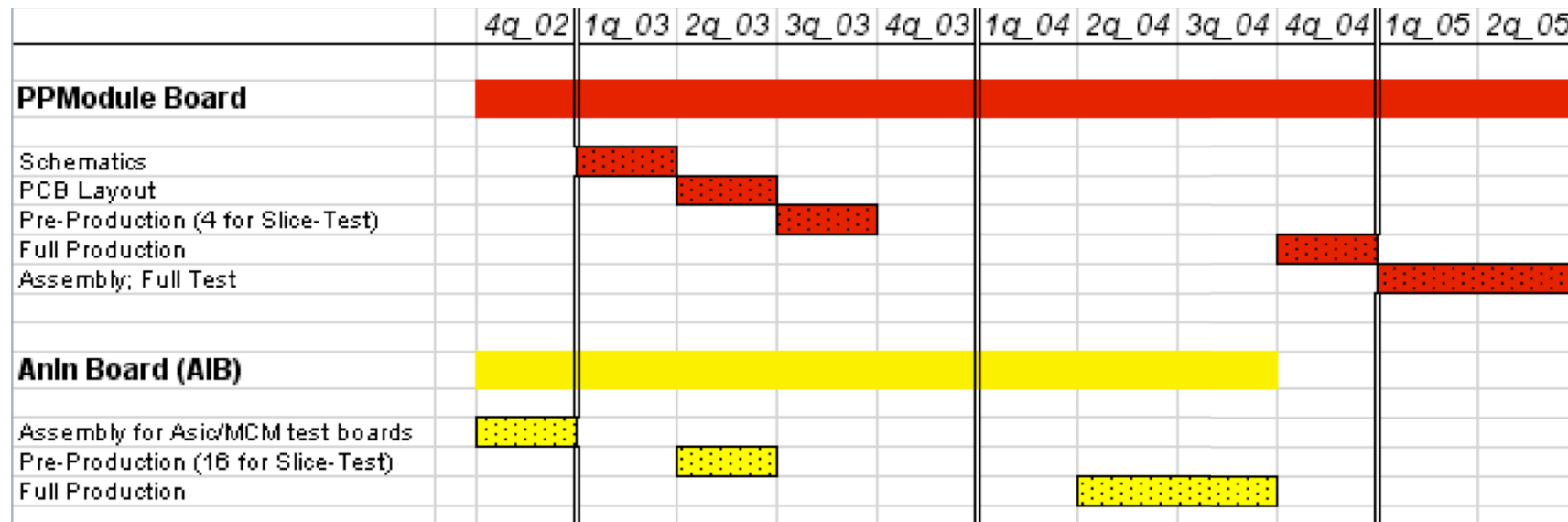
Subsystem Tests - ASIC Production - MCM Production

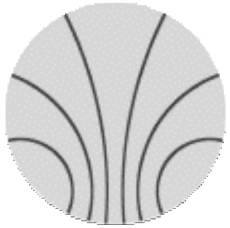




The PPr System : Status and future plans

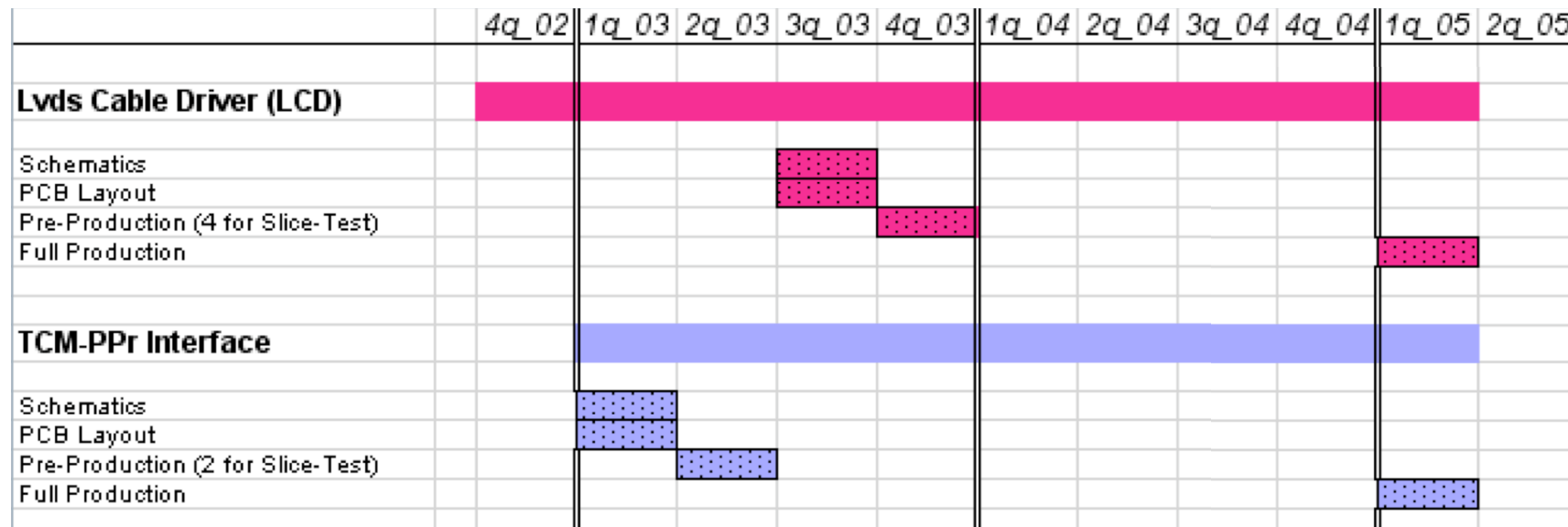
HARDWARE : Mother and Daughters (1) - The PPr Boards





The PPr System : Status and future plans

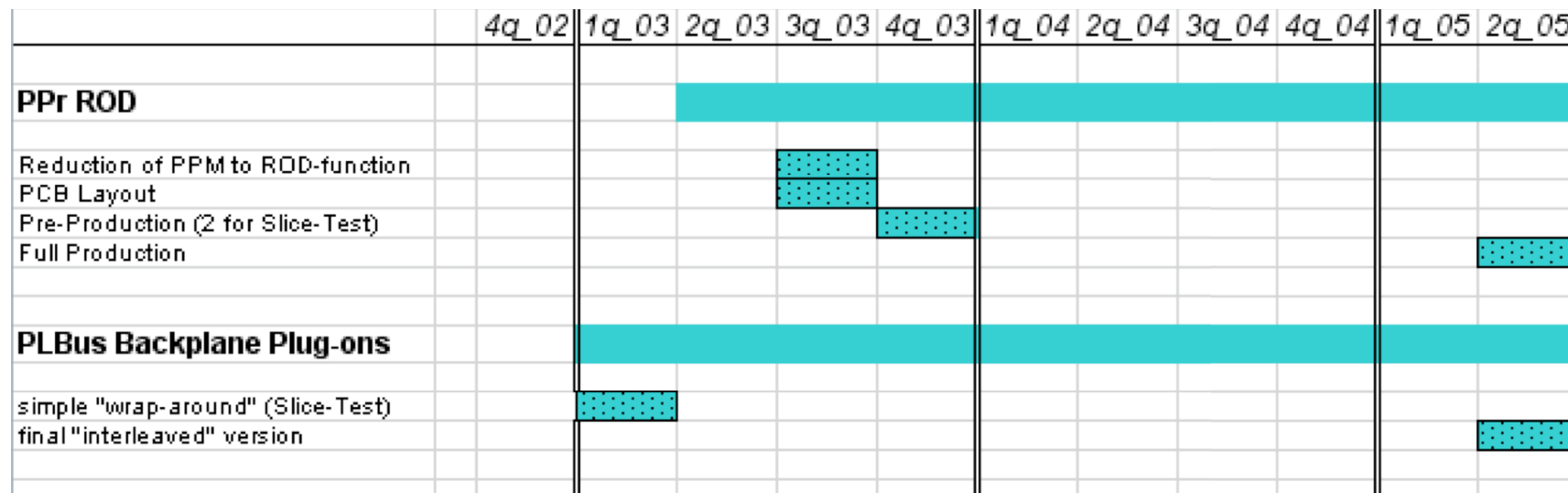
HARDWARE : Mother and Daughters (2) - The PPr Boards





The PPr System : Status and future plans

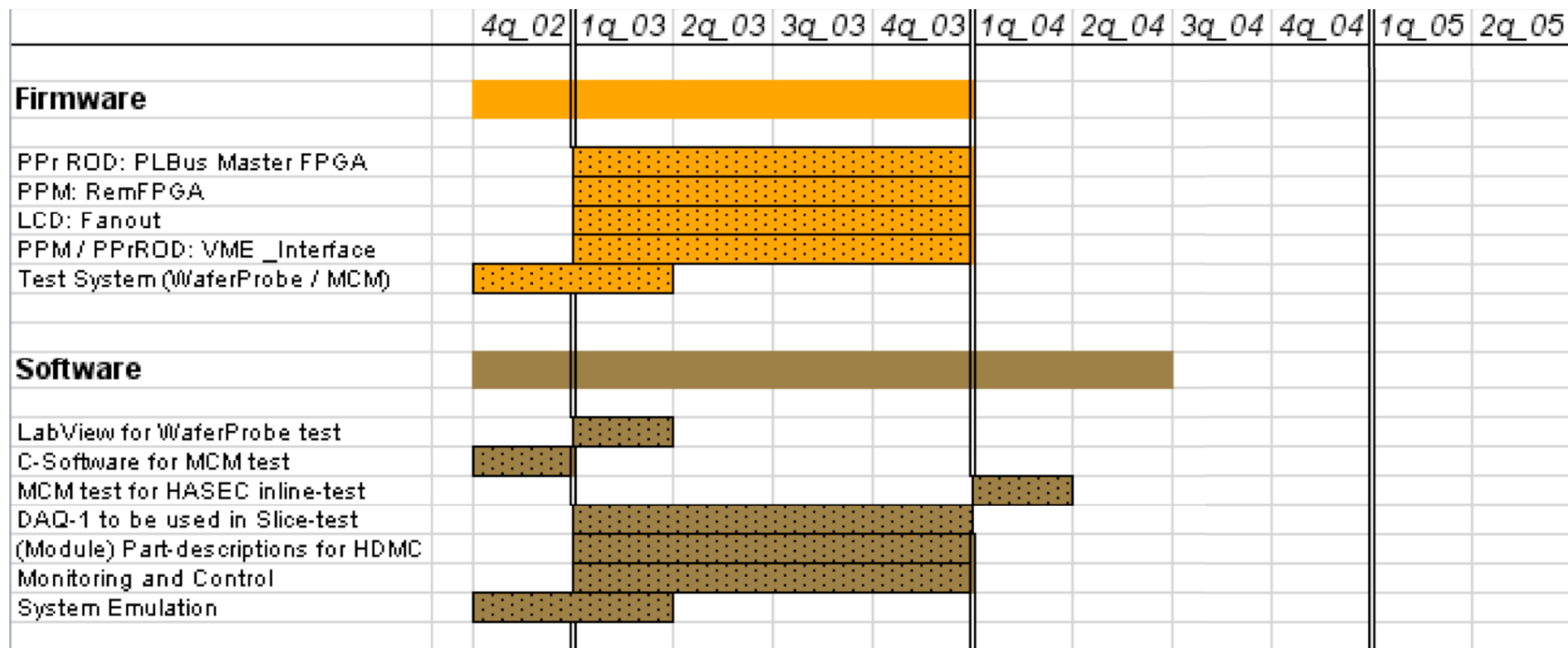
HARDWARE : The Readout System





The PPr System : Status and future plans

Software and Firmware





The PPr System : Status and future plans

Spending money : Purchase of components

	4q_02	1q_03	2q_03	3q_03	4q_03	1q_04	2q_04	3q_04	4q_04	1q_05	2q_05
Purchases											
Parts for AnIn boards											
LVDS 60MHz dies											
MCM Connectors											
Analog Cables (Saclay)		???									
MCM Substrates (100 for Slice-Test)											
Crates											

- Almost all commercial components will be available by the end of 2002 (including all spares)
- Crate purchase delayed to 2005
- ASIC production is a key issue for 2002 (availability of 0.6 μm technology)
- Last major cost item is production and assembly of MCM and PCB's
- Saclay status is unclear
- **SPENDING PROFILE REMAINS UNCHANGED**



The PPr System : Status and future plans

Conclusions :

Realistic re-scheduling taking into account current lack of manpower and losses due to removal of the institute sets the date for the first PPM back from spring 2003 to beginning of 2004.

Current efforts concentrate on a solid test of the core components (MCM / PPrASIC) which do heavily depend on the availability of current technologies.

Staff situation is expected to improve substantially next year.