



Slice Test Planning

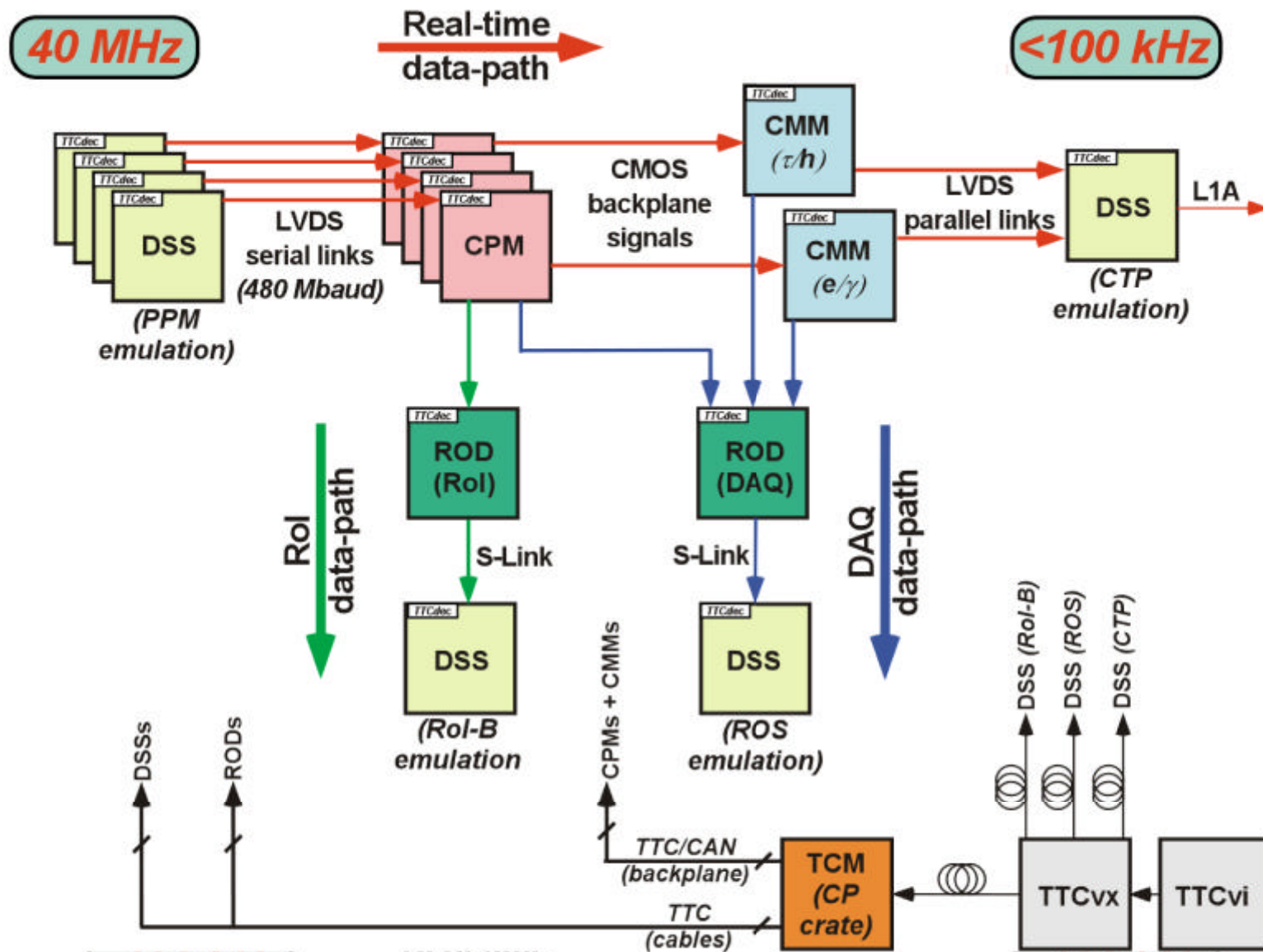


Schedule(s) and Milestones

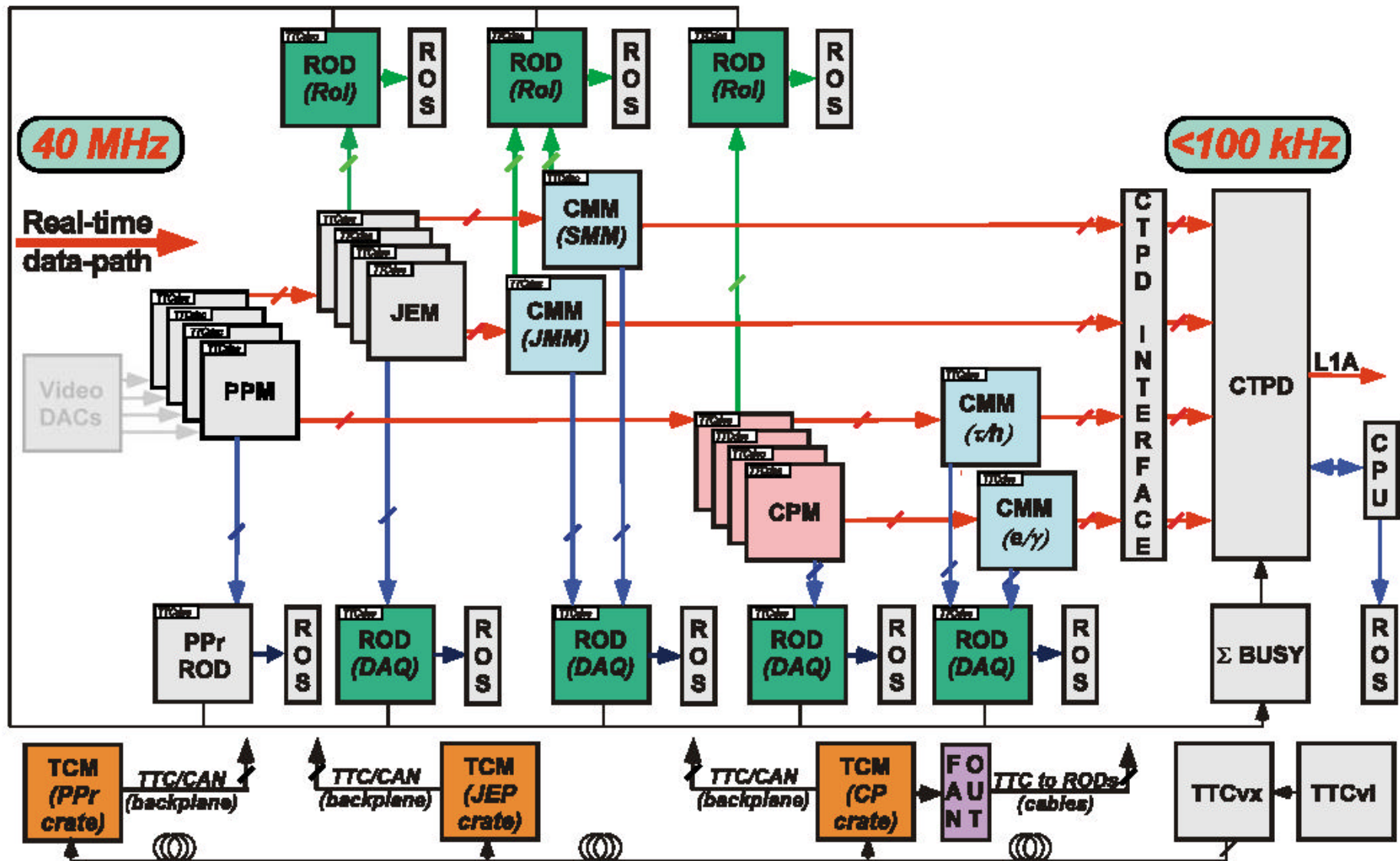
“Plus ça change, plus c'est la même chose”

Alphonse Karr (1849)

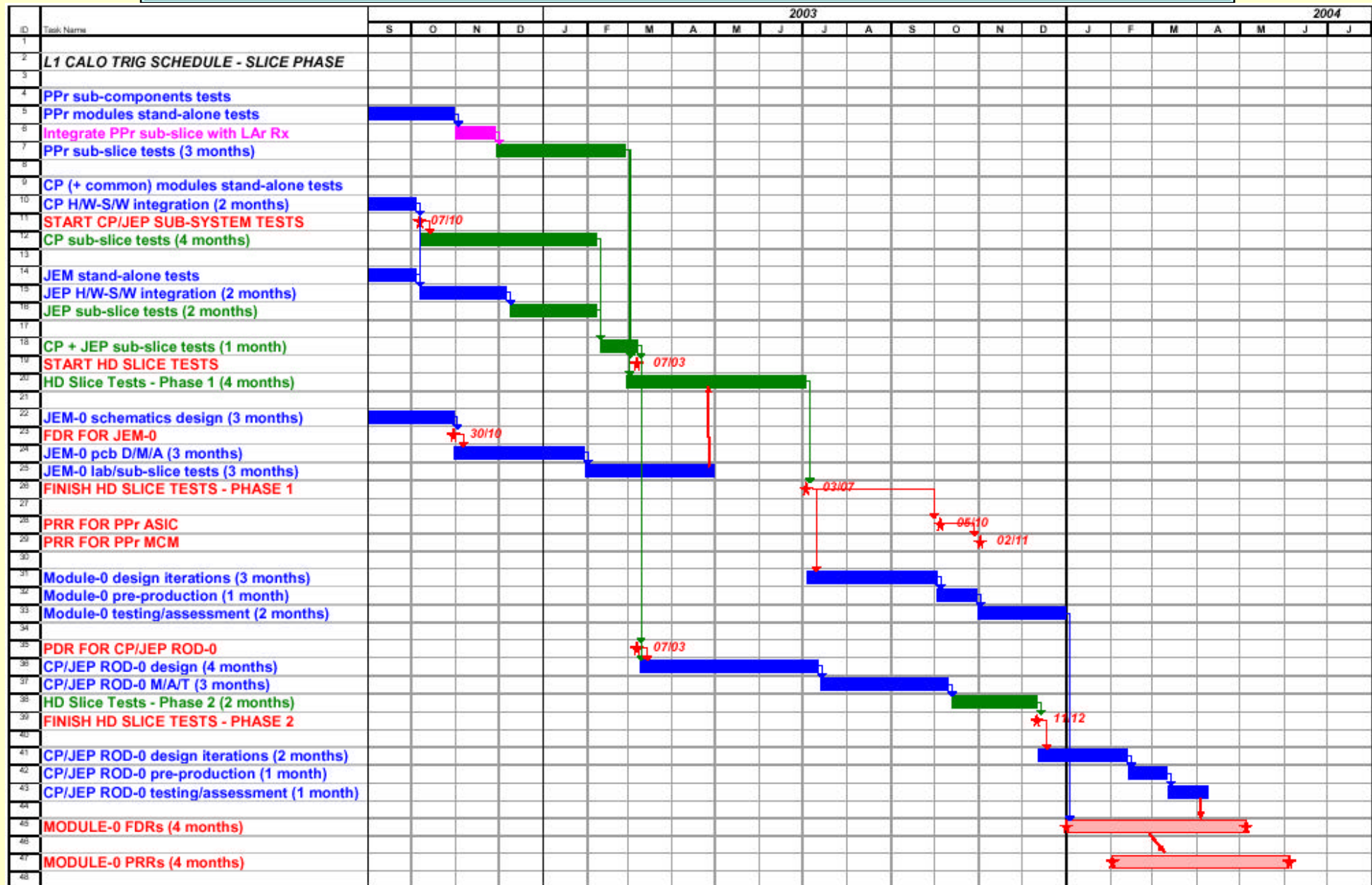
Sub-System "Slice" Tests >Q1 2003



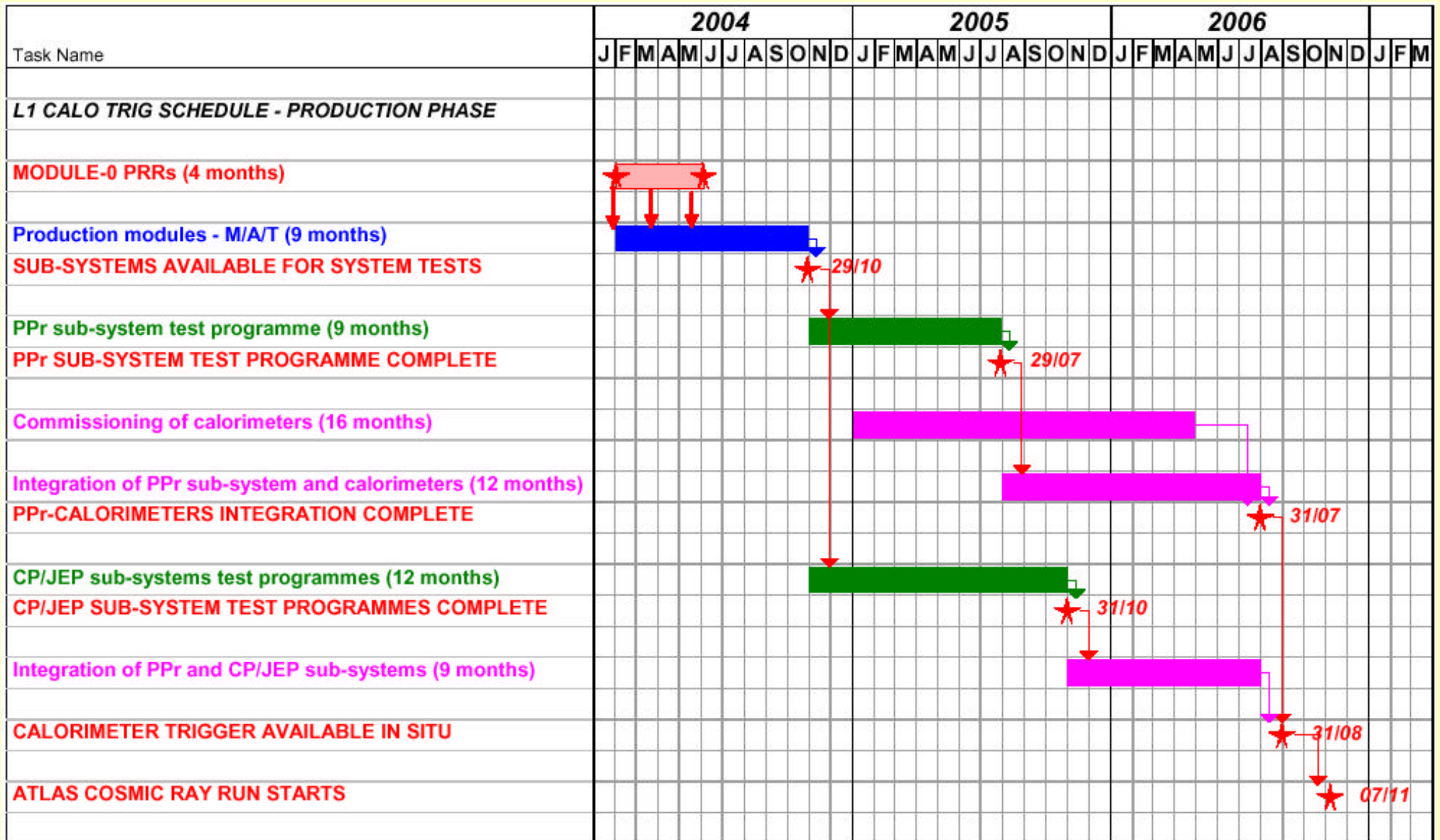
Full System "Slice" Tests >Q2 2003



Post-Stockholm Schedule – Pre-Slice



Post-Stockholm Schedule – Production



August 2002 Milestones

<i>Milestones</i>	<i>Date</i>
Start CP/JEP sub-system tests	Oct 2002
FDR for JEM1	Oct 2002
PDR for CP/JEP ROD	Mar 2003
Start HD Slice Tests	Mar 2003
Finish HD Slice Tests – Phase 1	Jul 2003
PRR for PPr ASIC	Oct 2003
PRR for PPr MCM	Nov 2003
Finish HD Slice Tests – Phase 2	Dec 2003
FDR for Processor Backplane (PB)	Jan 2004
FDR for TCM	Jan 2004
FDR for PPM	Jan 2004
FDR for PPr ROD	Jan 2004
PRR for PPM	Feb 2004
PRR for PPr ROD	Feb 2004
FDR for CPM	Feb 2004
PRR for TCM	Feb 2004
PRR for Processor Backplane (PB)	Feb 2004
PRR for CPM	Mar 2004
FDR for JEM	Mar 2004
PRR for JEM	Apr 2004
FDR for CMM	Apr 2004
FDR for CP/JEP ROD	Apr 2004
PRR for CMM	May 2004
PRR for CP/JEP ROD	May 2004
Sub-systems assembled for System Tests	Oct 2004
Finish PPr test programme	Apr 2005
Finish CP/JEP test programmes	Oct 2005
Finish PPr-Calorimeters integration	Oct 2005
Calorimeter trigger available in situ	Apr 2006

November 2002 Milestones

<i>Milestones</i>	<i>Date</i>	<i>“Official”</i>
FDR for JEM1	Jan 2003	(Oct 2002)
Start CP/JEP sub-system tests	Feb 2003	(Oct 2002)
PRR for PPr MCM	Apr 2003	(Nov 2003)
PRR for PPr ASIC	Jul 2003	(Oct 2003)
PDR for CP/JEP ROD	Aug 2003	(Mar 2003)
Start full Slice Tests	Mar 2004	(Mar 2003)
Finish HD Slice Tests – Phase 1	May 2004	(Jul 2003)
Finish HD Slice Tests – Phase 2	Jun 2004	(Dec 2003)
FDR for Processor Backplane (PB)	Oct 2004	(Jan 2004)
FDR for TCM	Oct 2004	(Jan 2004)
FDR for PPM	Oct 2004	(Jan 2004)
FDR for PPr ROD	Oct 2004	(Jan 2004)
PRR for PPM	Nov 2004	(Feb 2004)
PRR for PPr ROD	Nov 2004	(Feb 2004)
FDR for CPM	Nov 2004	(Feb 2004)
PRR for TCM	Nov 2004	(Feb 2004)
PRR for Processor Backplane (PB)	Nov 2004	(Feb 2004)
PRR for CPM	Dec 2004	(Mar 2004)
FDR for JEM	Dec 2004	(Mar 2004)
PRR for JEM	Jan 2005	(Apr 2004)
FDR for CMM	Jan 2005	(Apr 2004)
FDR for CP/JEP ROD	Jan 2005	(Apr 2004)
PRR for CMM	Feb 2005	(May 2004)
PRR for CP/JEP ROD	Feb 2005	(May 2004)
Sub-systems assembled for System Tests	Apr 2005	(Oct 2004)
Finish PPr test programme	Oct 2005	(Apr 2005)
Finish CP/JEP test programmes	Jan 2006	(Oct 2005)
Finish PPr-Calorimeters integration	Jul 2006	(Oct 2005)
Calorimeter trigger available in situ	Aug 2006	(Apr 2006)

Conclusions

- ◆ The severe delay to the full Slice test programme can hopefully be contained
- ◆ Explore ways of accelerating the PPr programme:
 - ◆ Out-sourcing pcb layout
 - ◆ Use other members of the collaboration for some design areas – e.g. TCM Adapter Link Card
 - ◆ Re-design DAQ architecture to use CP/JEP RODs
 - ◆ ...
- ◆ Spend more time studying the sub-slice systems, and less with the full Slice – this could have some benefits
- ◆ In the longer term (*post-Slice*), there will be much less time for full system tests and final commissioning in ATLAS
- ◆ Almost all our public milestones must be revised – just 2 months since the last major re-baselining
- ◆ Any further significant delays could prove fatal ... ATLAS start-up won't always be 5 years away