

PPrMCM status & MCM / ASIC test plans

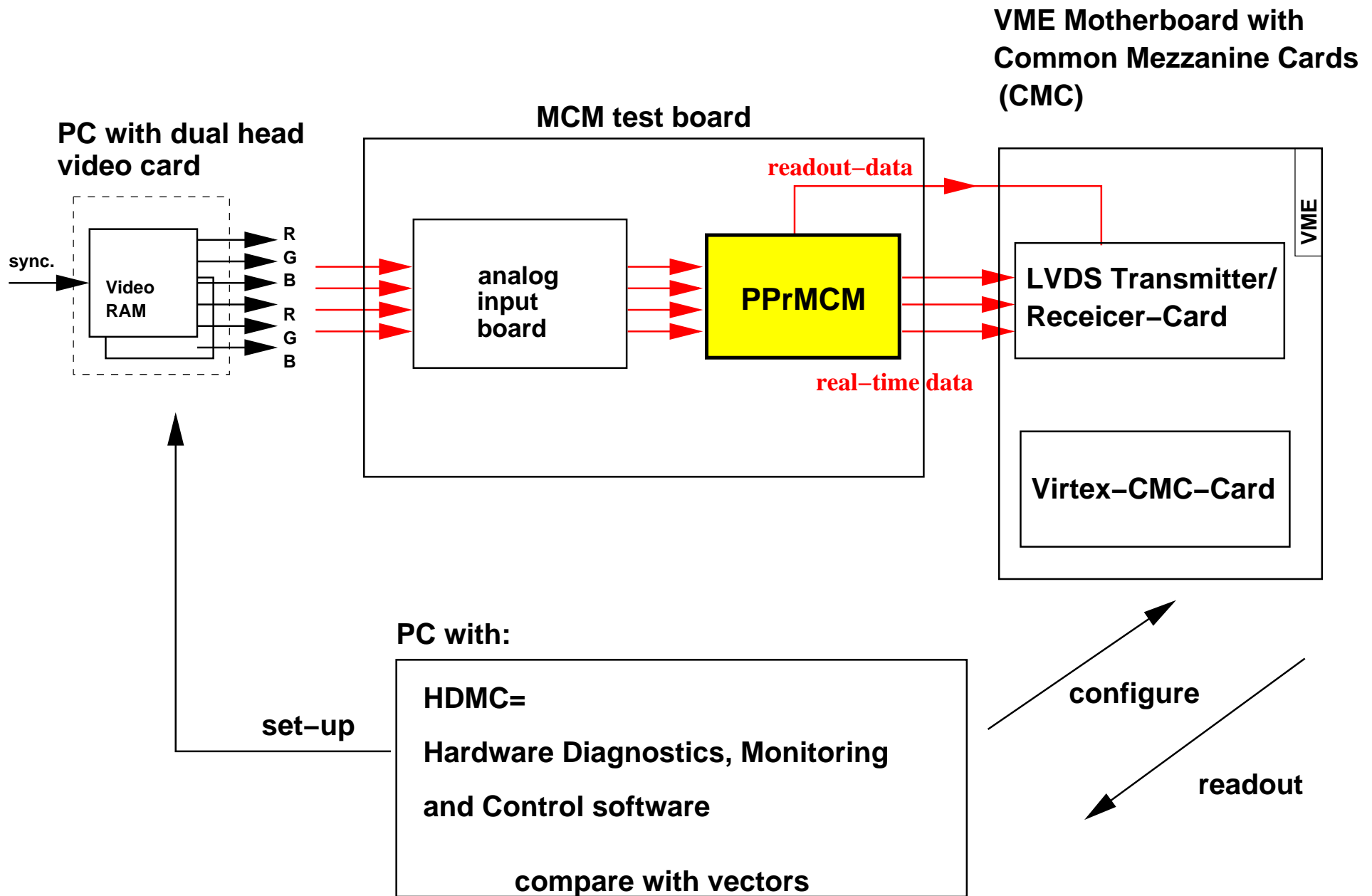
W. Hinderer, Kirchhoff–Institut für Physik, Universität Heidelberg, Germany

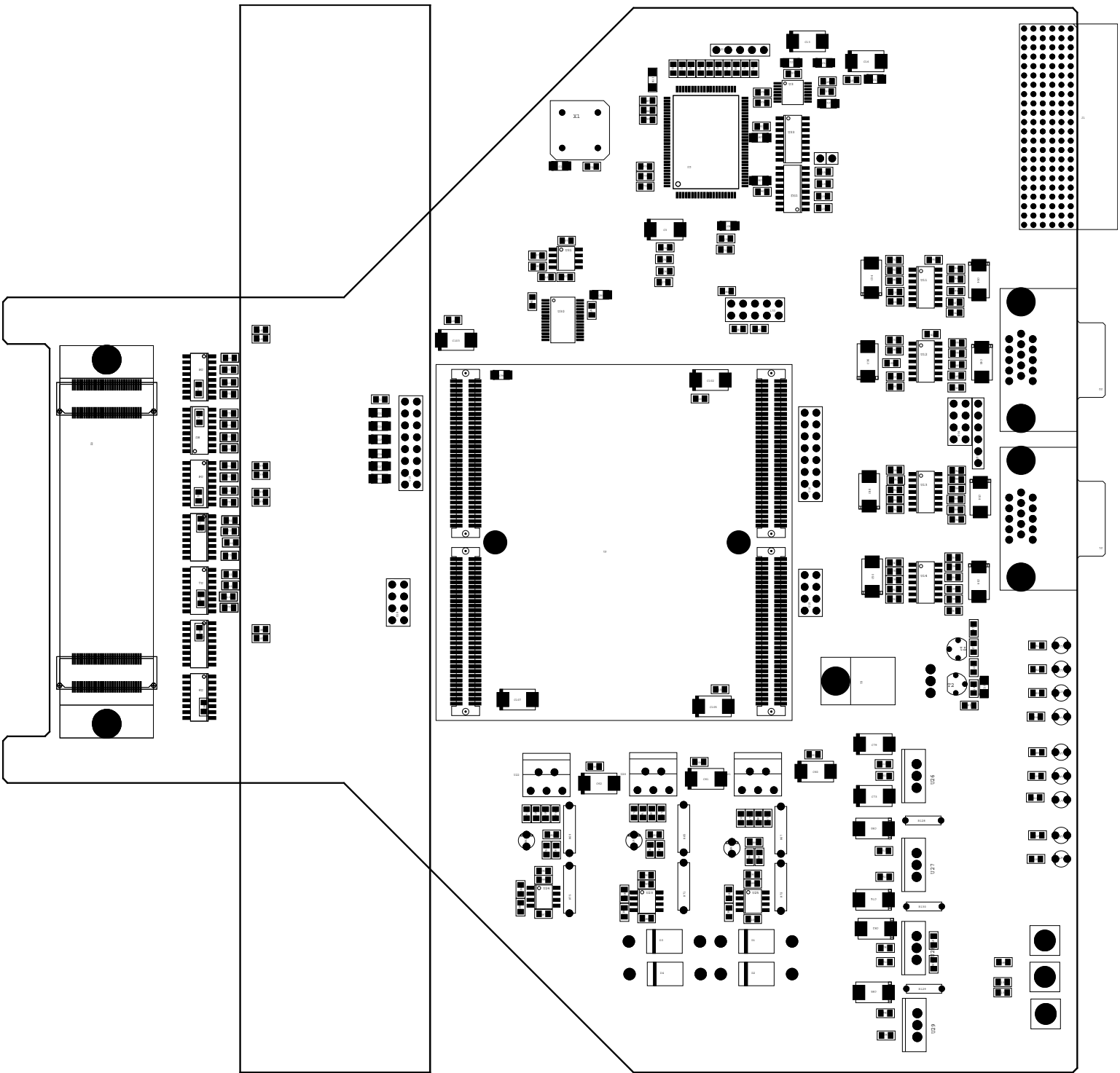
- status of the PPrMCM**
 - status of the MCM testsystem**
 - status of the ASIC test**
-

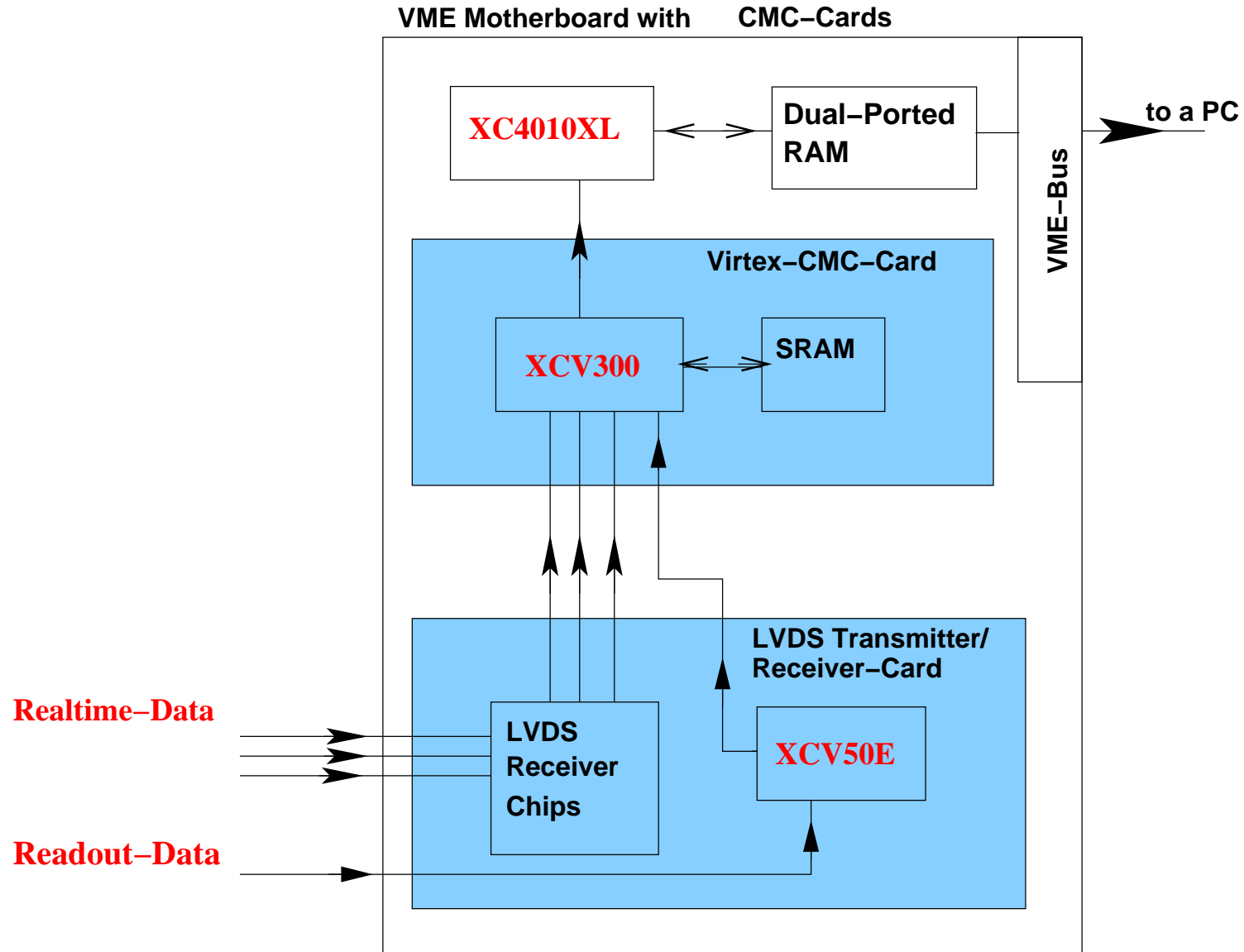
- Würth Elektronik is going to deliver 6 MCMs on March 26, 2002

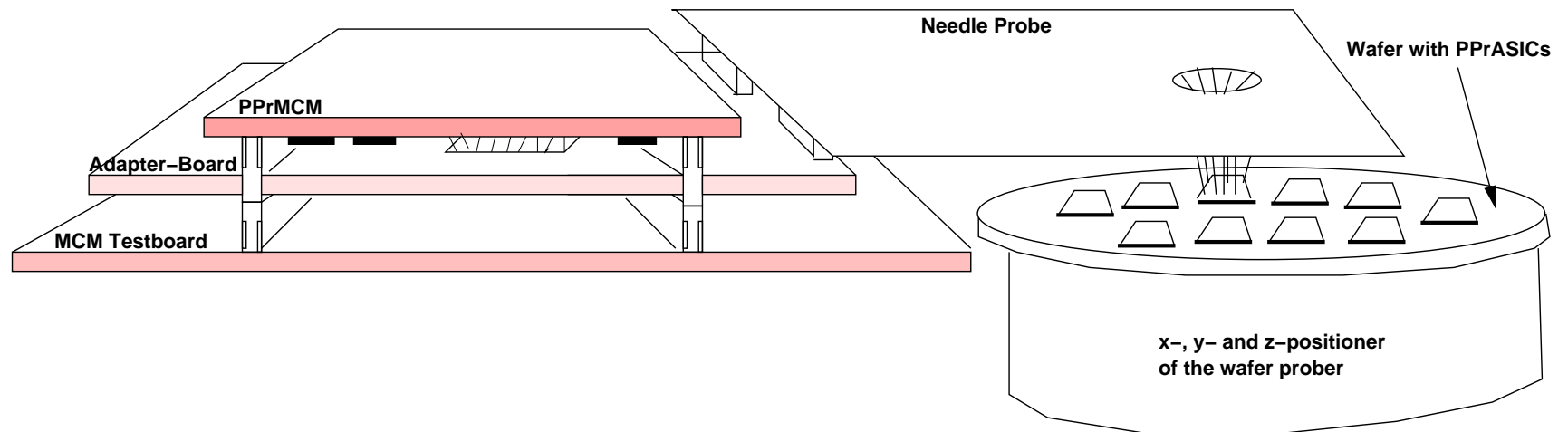
What is new in this MCM-Version?

- due to the high power dissipation of 2.5–3.0 W for the PPrASIC we had to make a redesign with thermal vias in case of the PPrASIC
- now thermal vias are used for all nine dies: 124 in case of the PPrASIC, 30 for each ADC, 9 for the Phos4, 6, 8 and 9 for the three Serializers, respectively.
- the MCM was extended on both sides for 7 mm and three holes on both sides were placed.
The holes allow the safe mounting of the PPrMCMs onto the PPMs.
- Some minor modifications: reordering of the ADC input signals to allow BC-Mux along the phi-direction
- Optimization of the placement of capacitors and resistors, optimization of the glue area for the lid









Summary

ASIC test:

- design of the adapter board and the needle probe card for the ASIC test have to be done now!

MCM test:

- hardware for the MCM testsystem is ready or soon available
- now a lot of software for the MCM testsystem has to be written

First step, when ASIC comes back:

- make simple power tests with the PPrASIC–Dies
- take a "good" PPrASIC–Die and mount it on a MCM