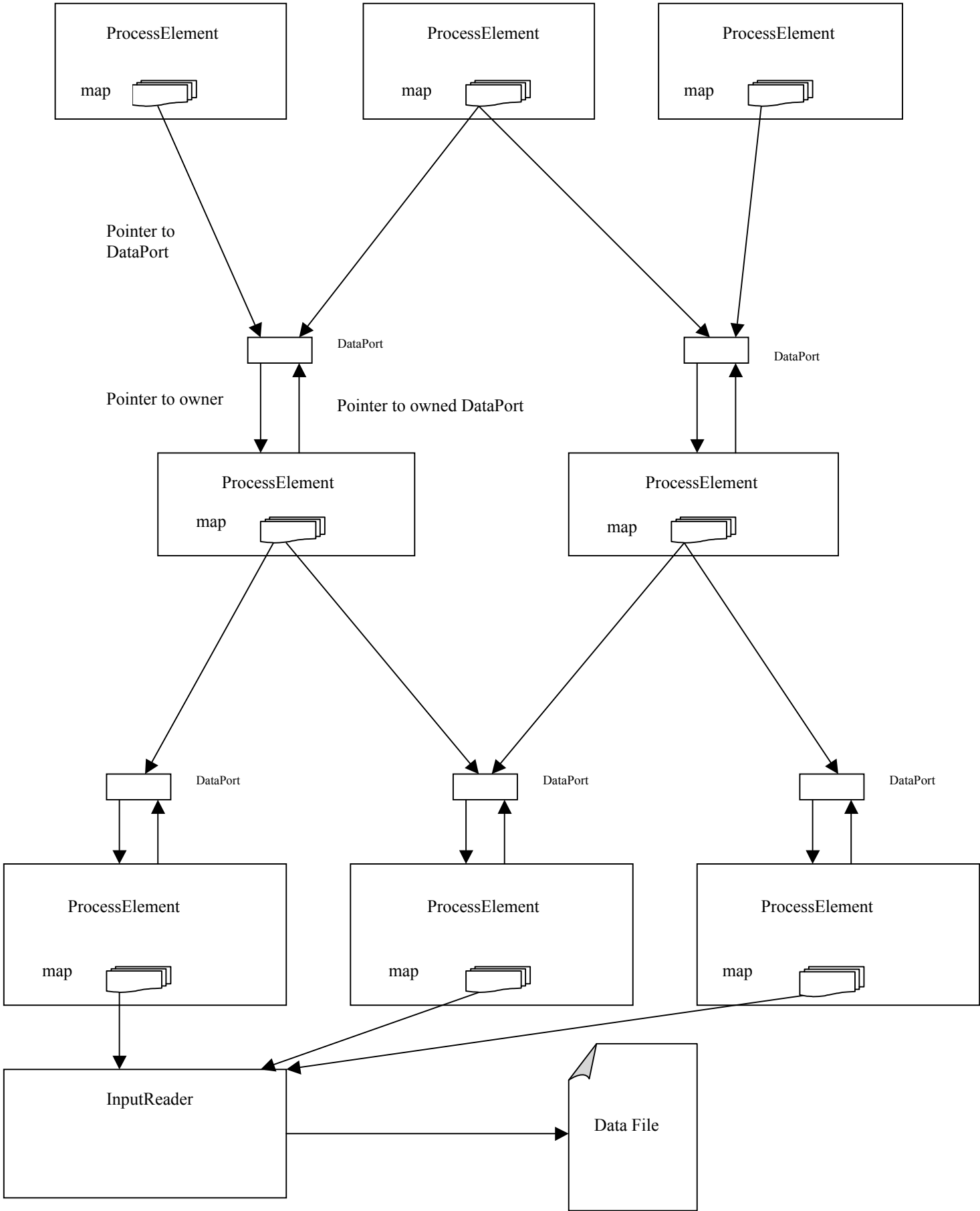
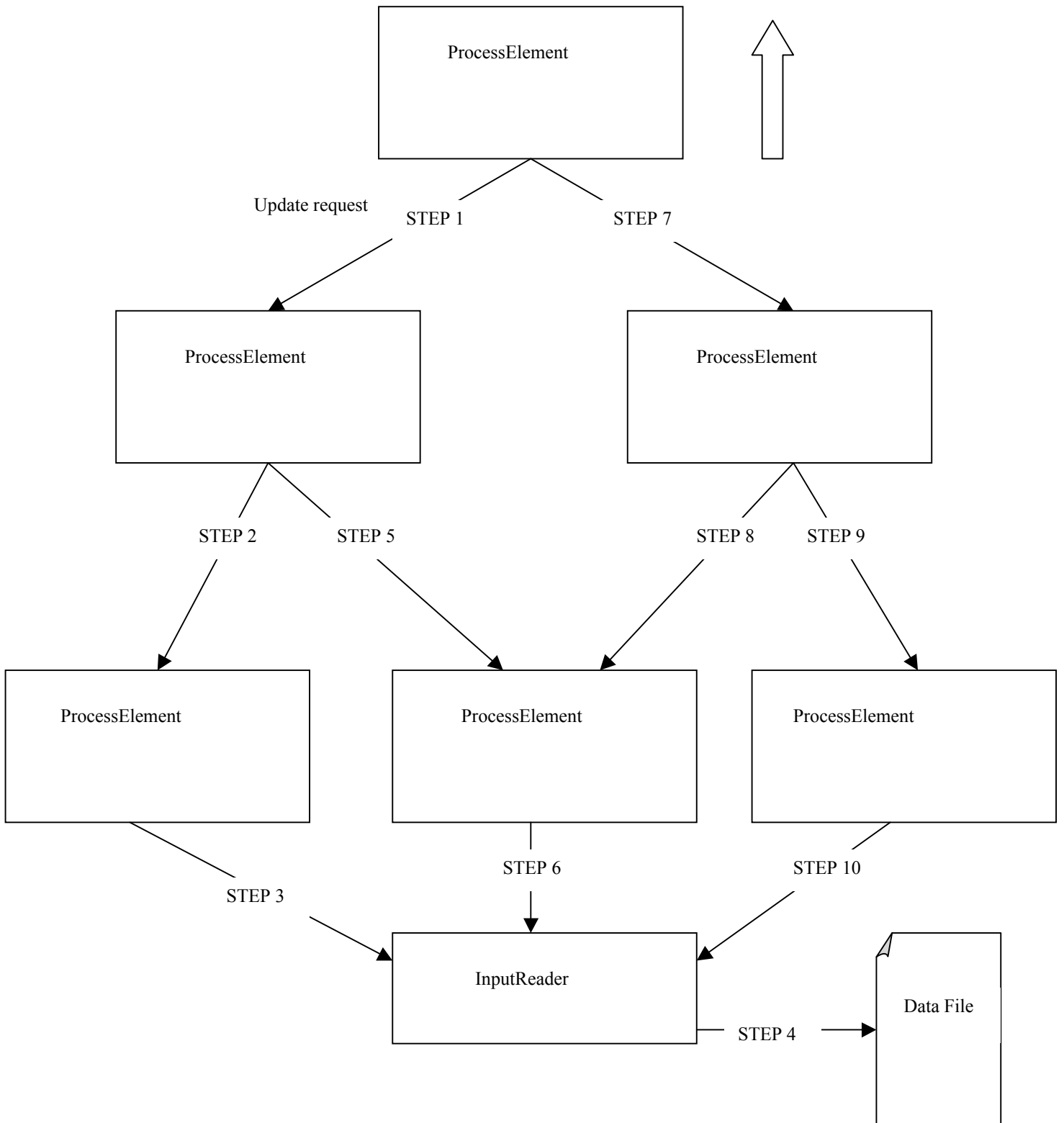


DataPort CONNECTION CHART

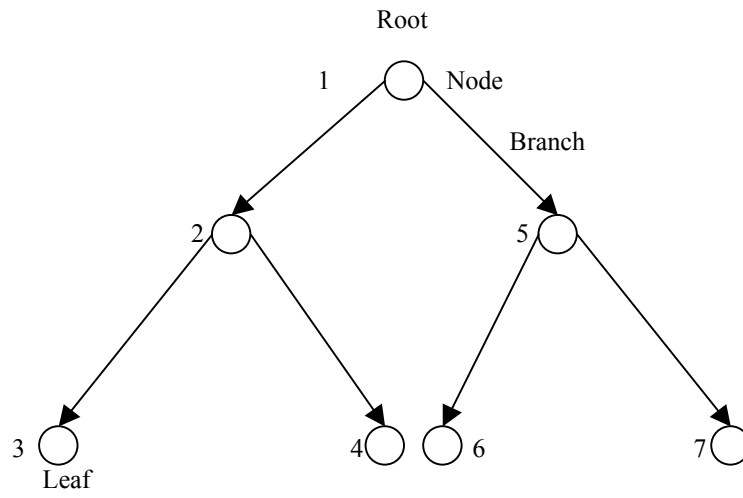


UPDATE FLOW CHART



STEP 6, 8 and 10 are ignored by the receiver since the object receiving the update request can be updated only once in every program cycle.

Inorder search pattern in a binary tree



The numbers by the nodes indicate the visiting order in a “Inorder” search pattern through the tree
The resemblance with our update order is striking.