



# DSS and ROD Firmware Updates

**James Edwards**

**RAL**



# DSS Modifications

- All done, nothing to report!



# ROD Modifications

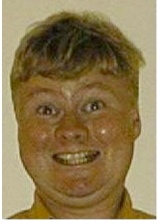
- **Data CMM CP slice.**
  - Design Created many moons ago.
  - Done basic tests in R25 HDL.
  - Need Bruce to test it properly.



# ROD Modifications

## ■ JEM slice.

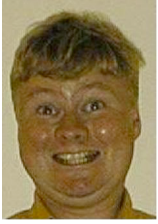
- Made an attempt at Draft 3.0
- After meeting with Norman on Thursday 22nd September 2002, work stopped due to too many uncertainties.
- Now seen Draft 5.0
  - Significantly different, requires a complete re-design.



# ROD Modifications

## ■ JEM ROI's.

- Not even going to start on this one until we get something more certain.



# Summary

- **A lot of work has been done, but was destined to end up in the Microsoft Wastebasket!**