

Atlas UK Meeting 16/04/02



Adam Davis

Structure of Talk



■ Processor Crate

- Bus Bars
- Fusing
- Card Guides

■ VME Mount Module

- Connector
- MXI Card

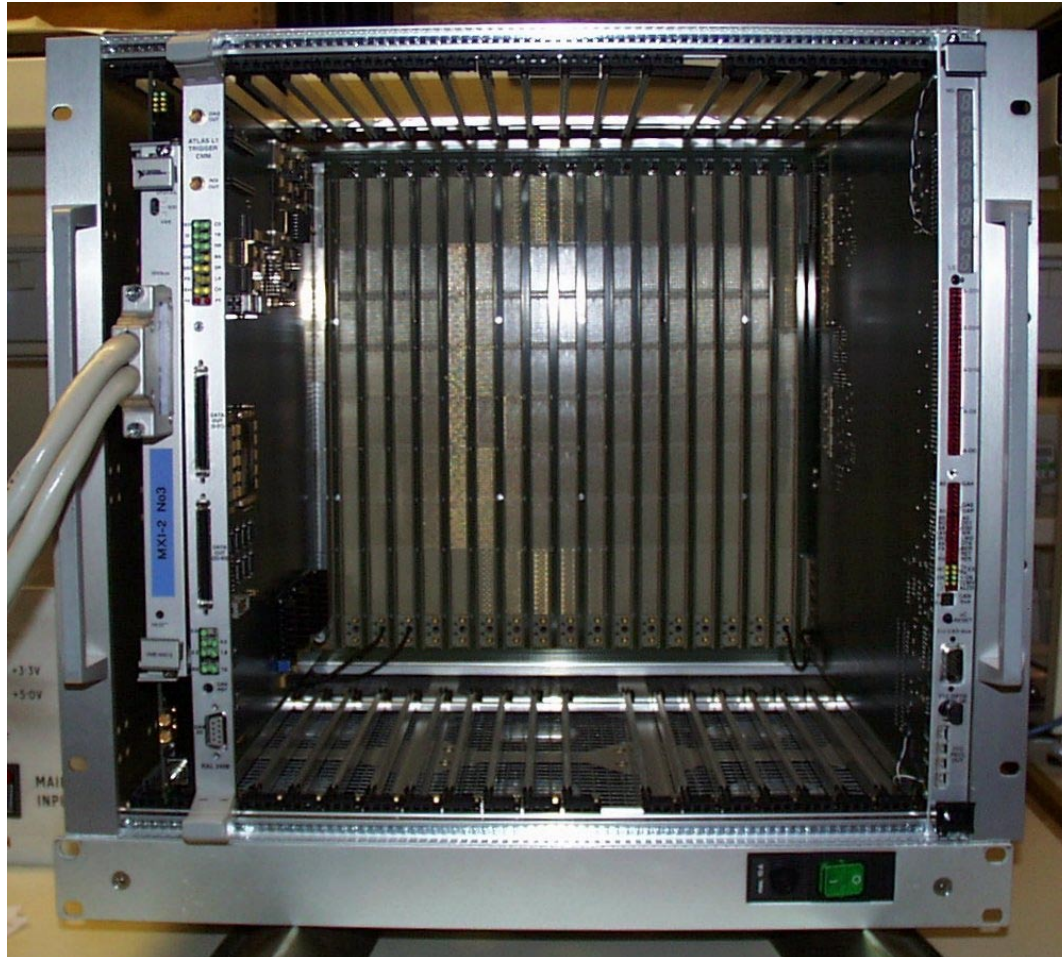
■ Timing Control Module

- VME Read / Write Cycles
- Further Tests

■ GIO

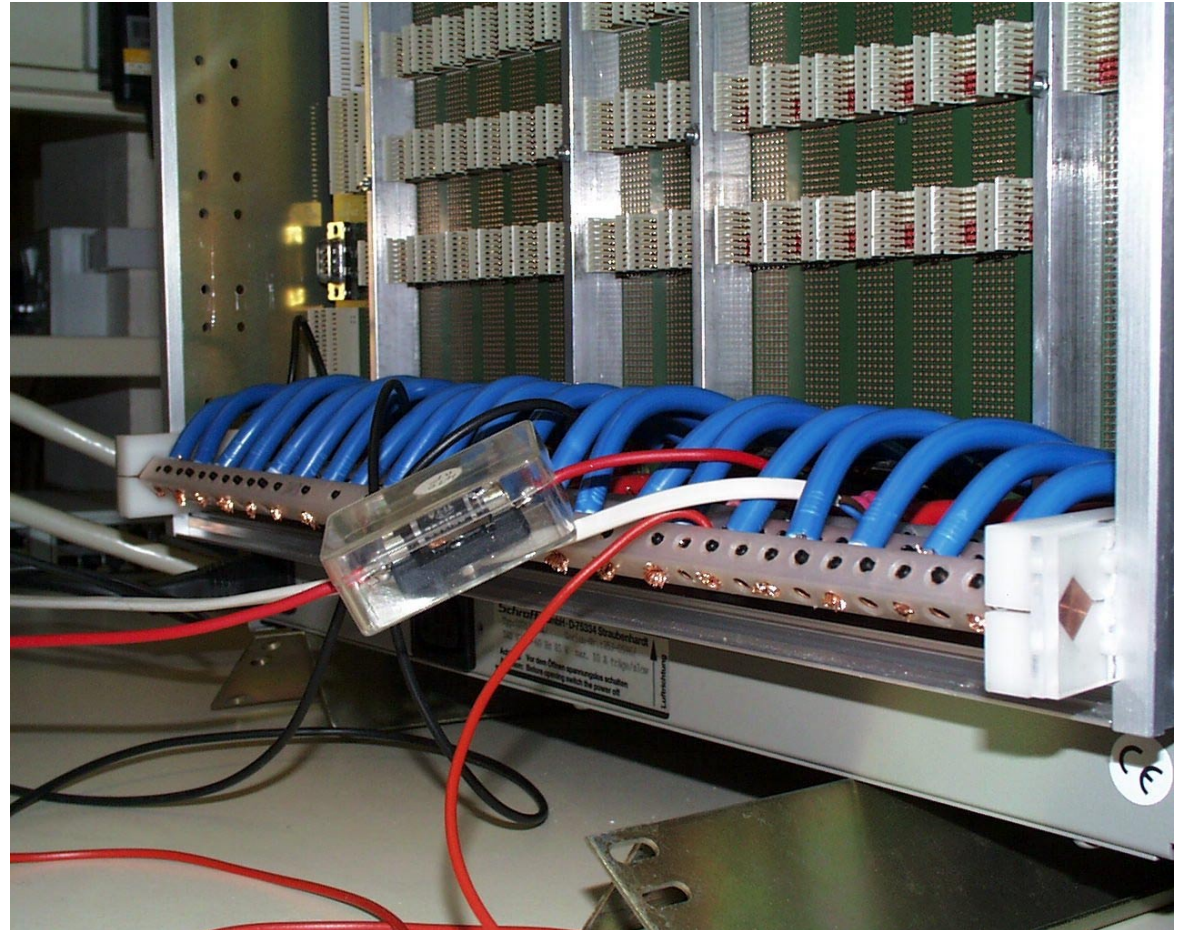
- Board Layout
- Status

Processor Crate



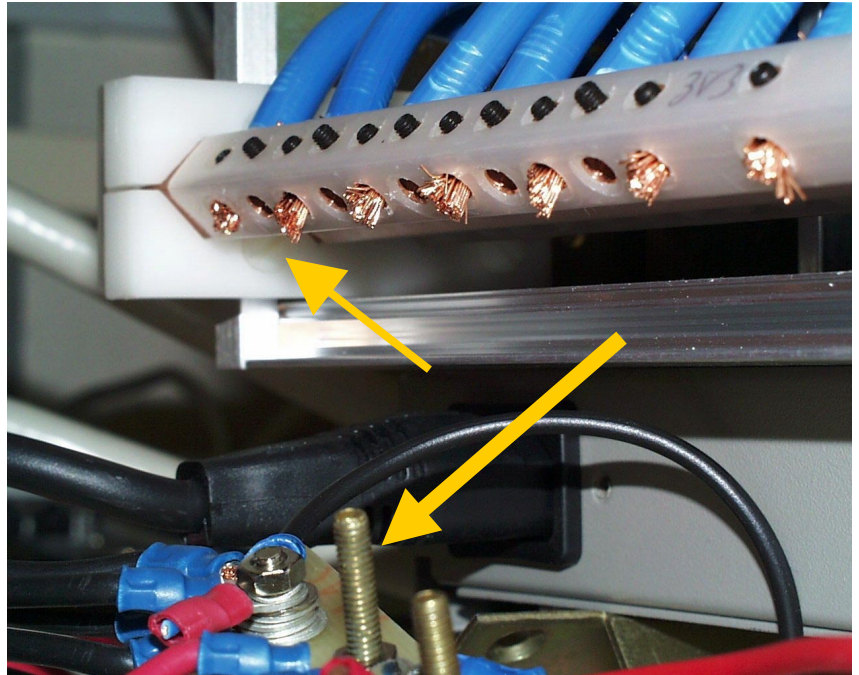
Processor Crate Power

- Needs a Cover on bars
- Shown in-line fuse



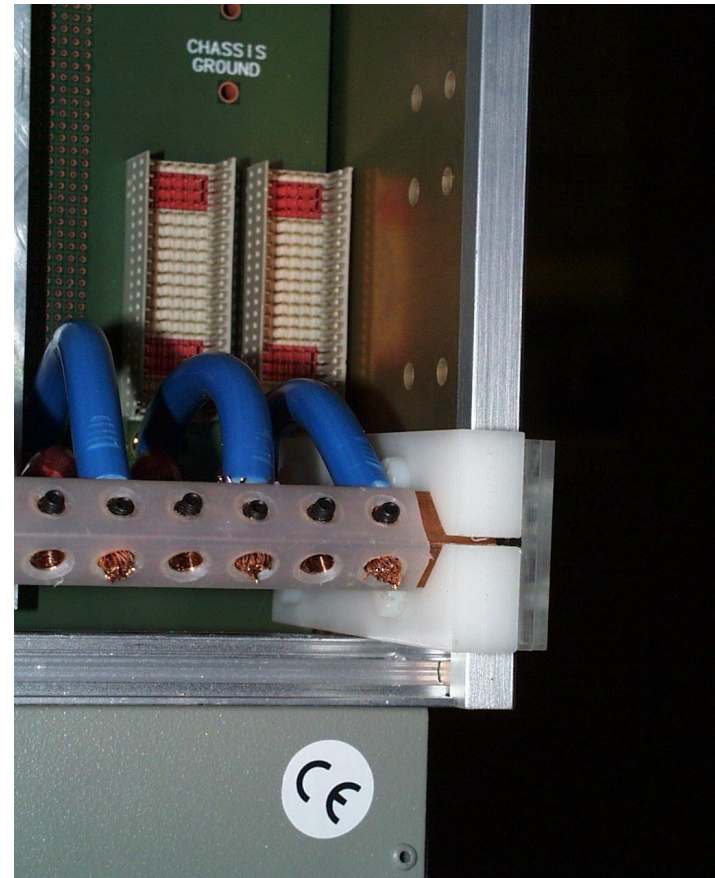
Left Mounting Block

- Screw Broke in Transport
- Also shows high power connections exposed and dangerous needs plastic box like fuse has



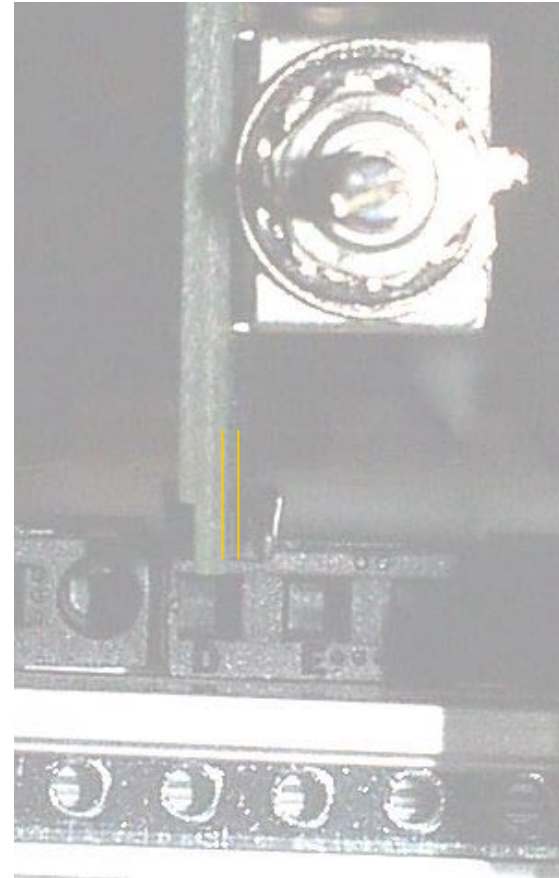
Right Mounting Block

- Problems mounting bars on top of one another.



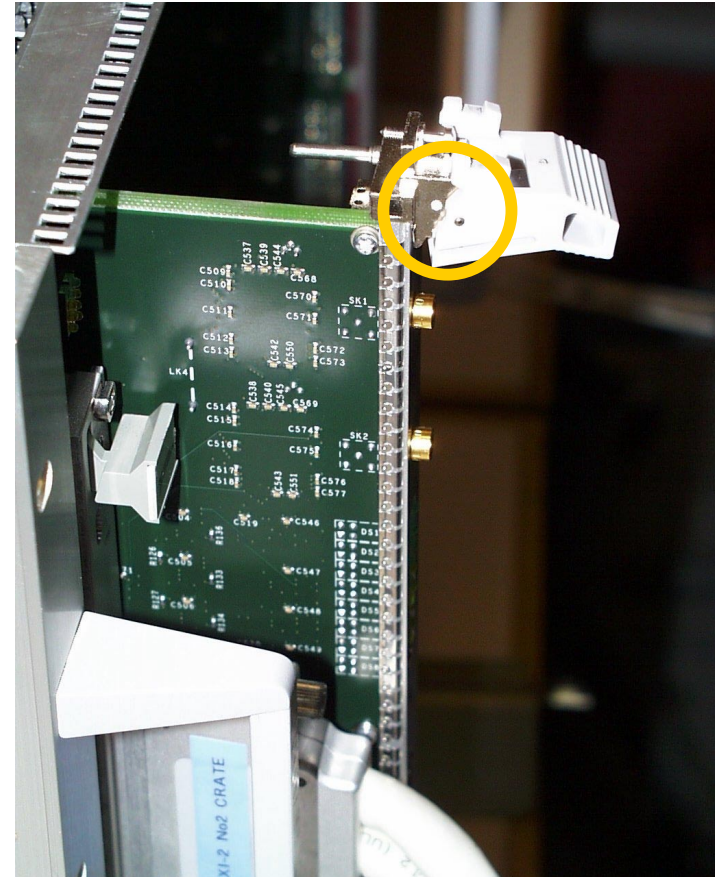
Processor Crate PCB Guides

- Gap too large
- Boards do not locate properly
- Simply Three Options
- Replace all Guides.?
- Do not mill cards.?
- Make special shims.?
- Dave Cooper Monday
 - ELMA
 - Specialist
 - Polarising keys.?



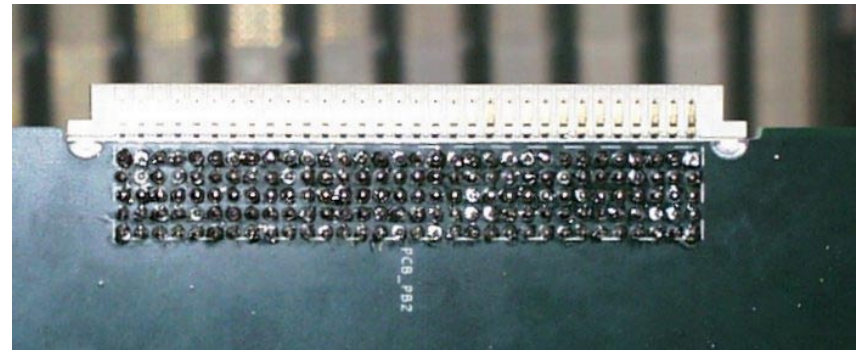
Processor Crate Ejectors

- As predicted by the majority of us, the ejector handle on the top has broken.



VME Mount Module

- Removed another connector and replaced with correct one. More connectors are on order..
- Have to cut out section of board. 2mm X 100 approx.



VME Mount Module

- VMM Will not mount back plane in slot 1



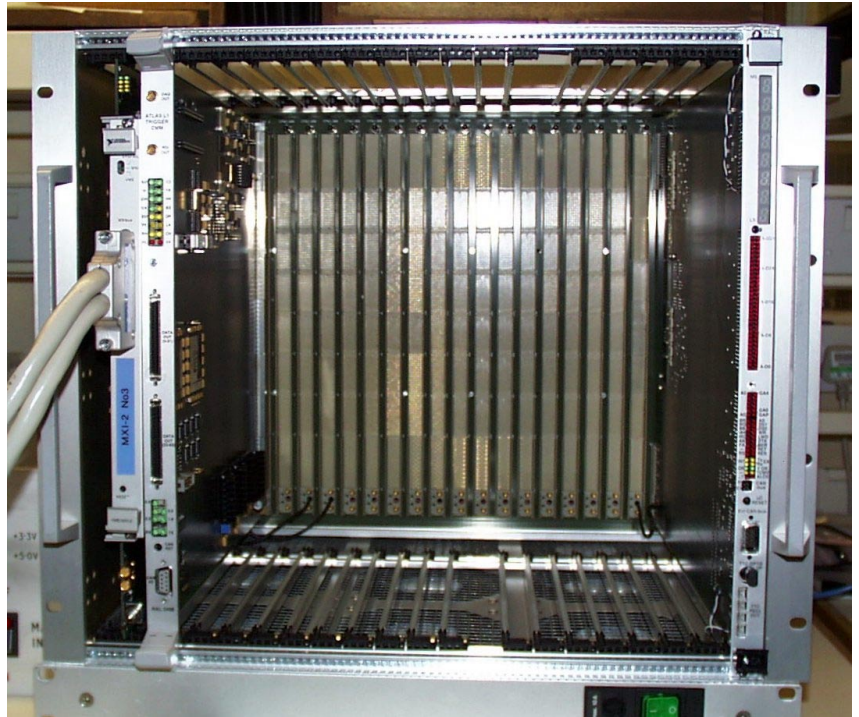
VME Mount Module

- It will however fit into slot 2



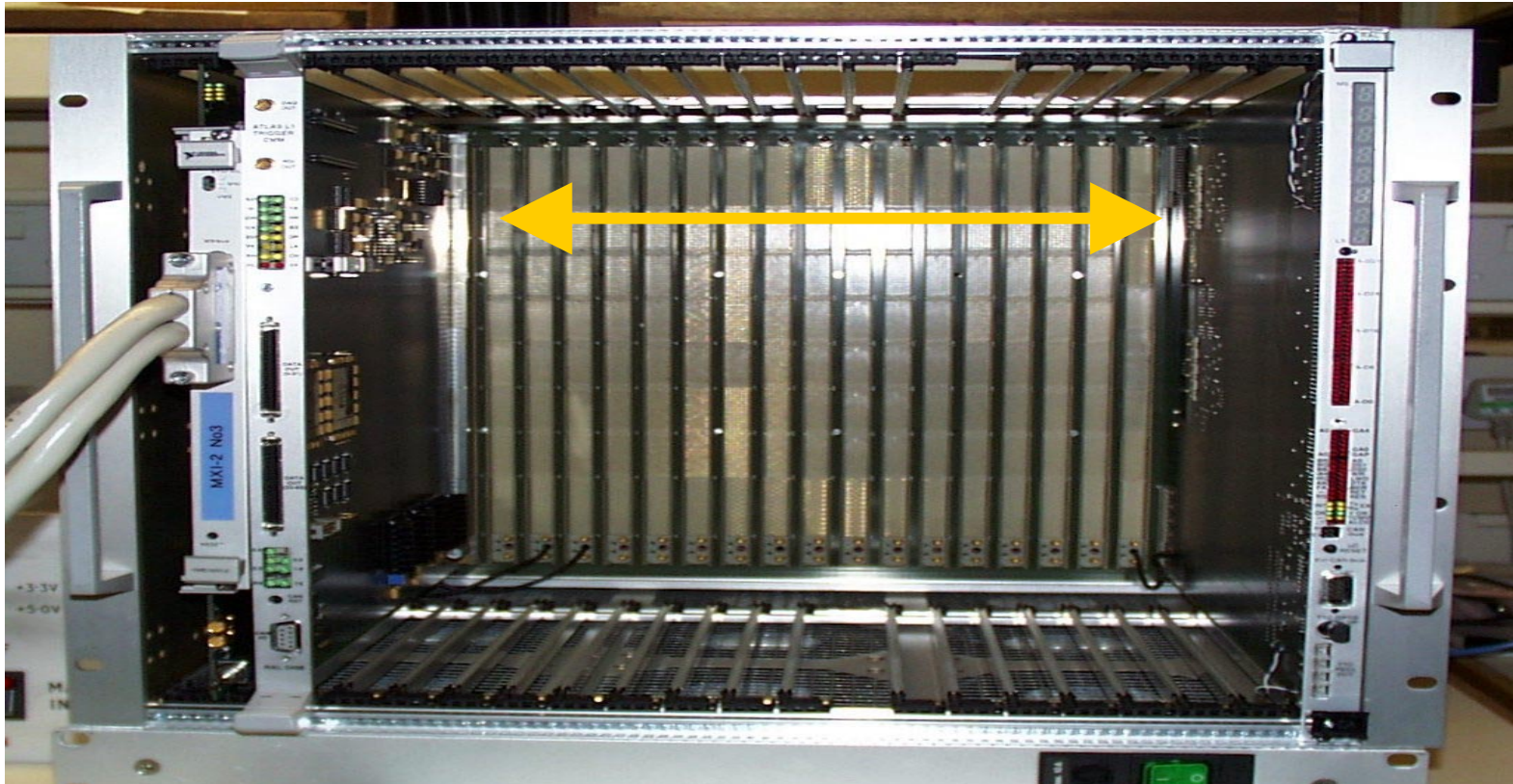
Timing Control Module

- Dave sent .mhx file last Monday
- No Further progress, taken off Atlas last week.
- TCM fits in crate with current front panel.



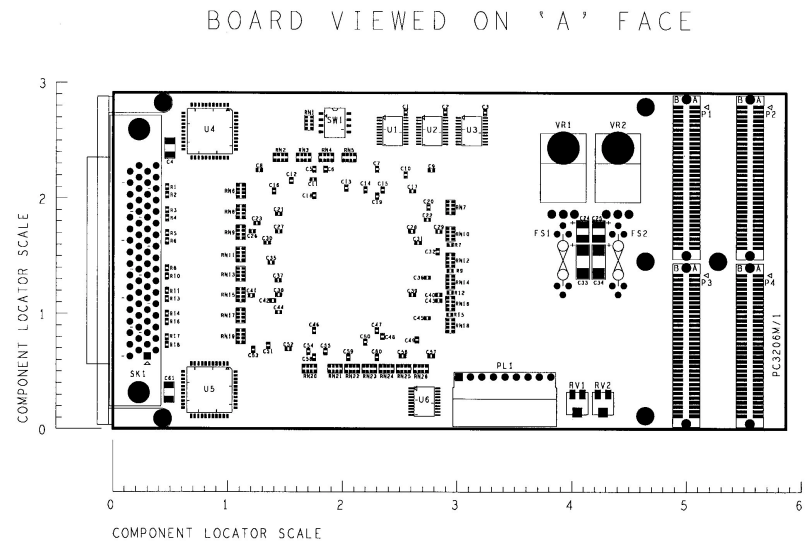
VMM & TCM

- VME Read / Write cycles
- Write to and read from memory on TCM
- Reset Microcontroller



GIO

- Bottom View, main component side
- JTAG port changed to single row of pins
- 4 off ordered



GIO

- Top View FPGA Side
- Net list checked by Richard Matson
- Can test 95% of board.

