



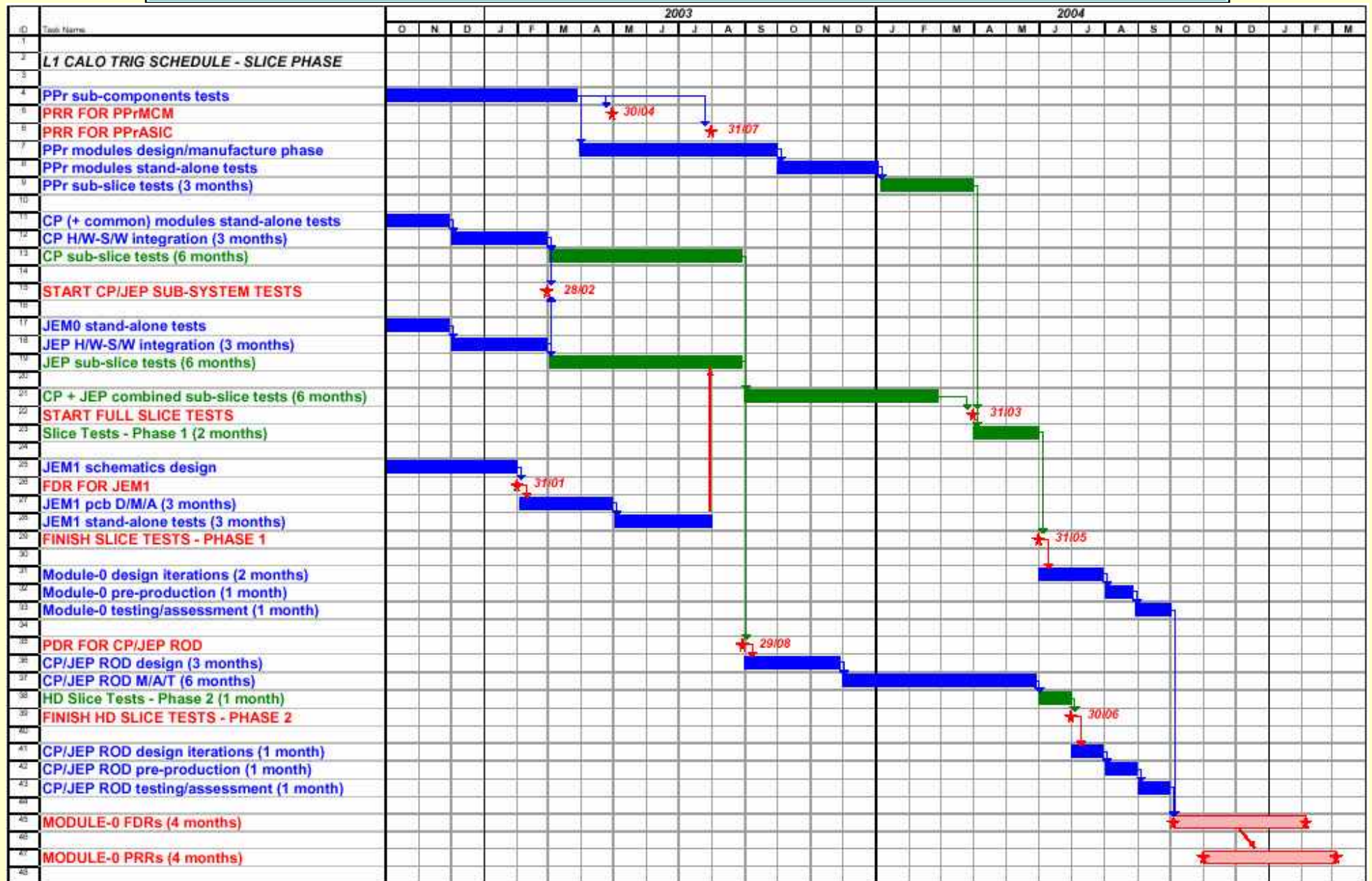
Schedules ...



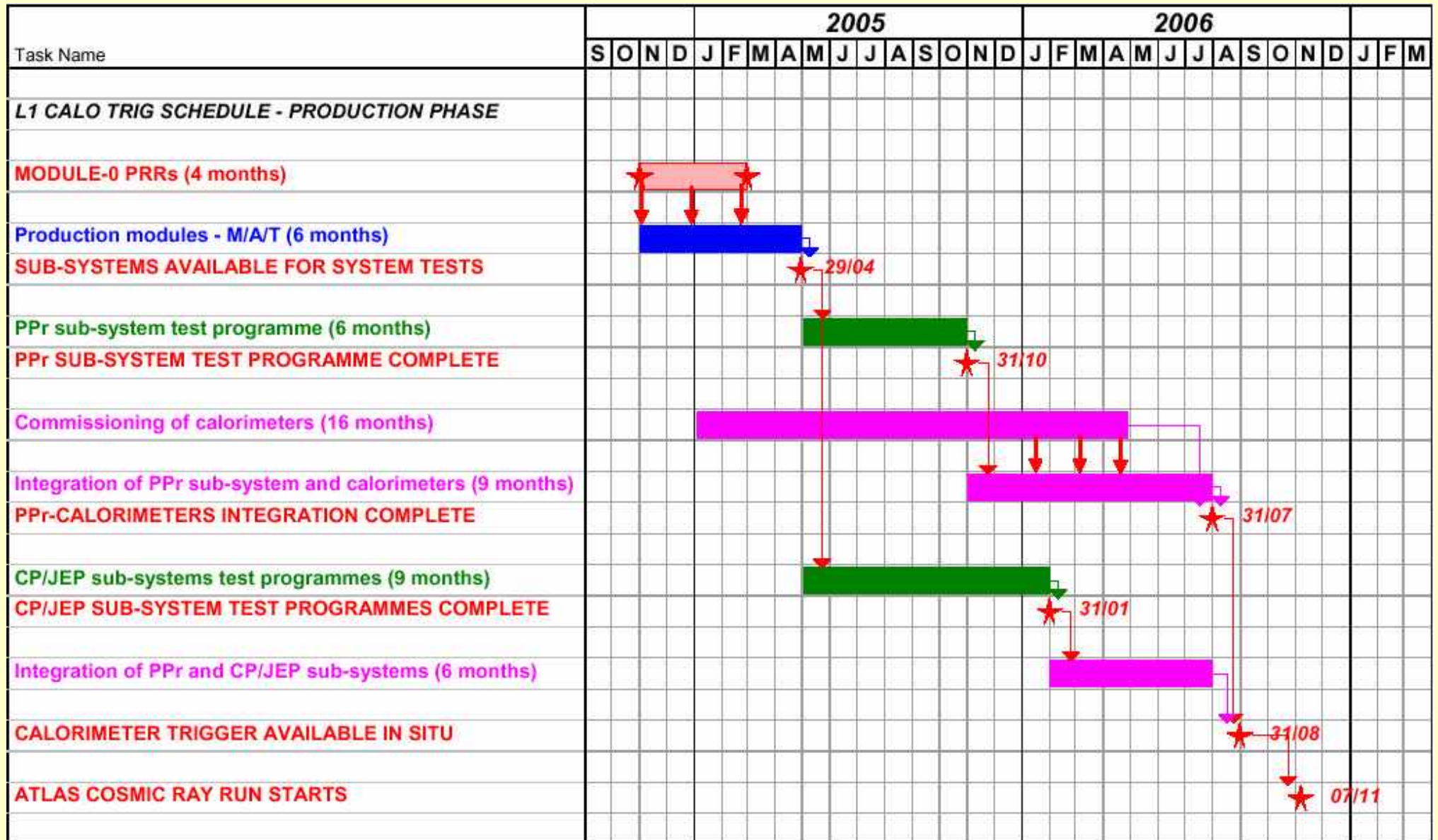
and

Milestones

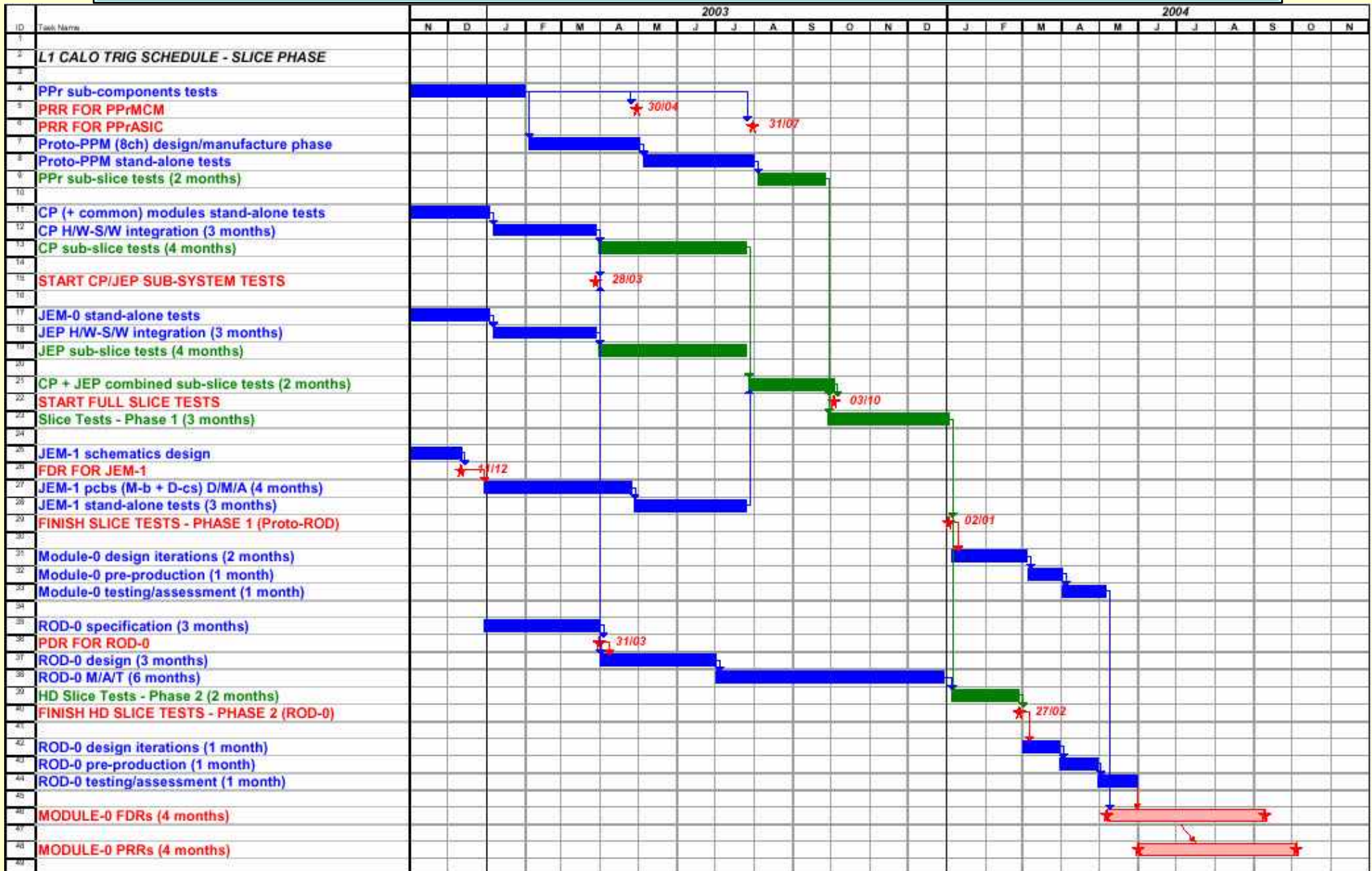
Post-Birmingham Schedule – Pre-Slice



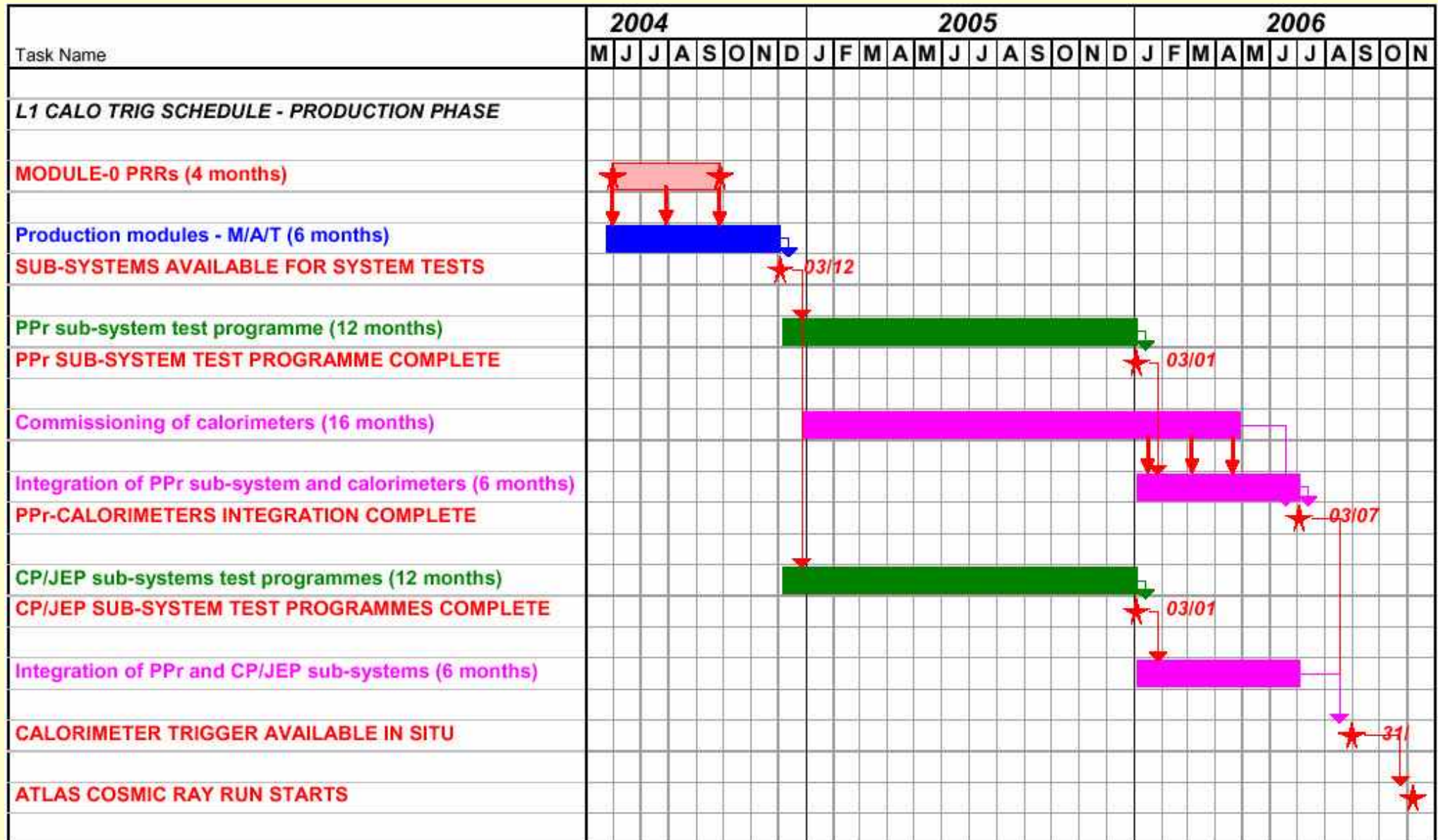
Post-Birmingham Schedule – Production



Post-post-Birmingham Schedule – Pre-Slice



Post-post-Birmingham Schedule – Production



December 2002 Milestones

<i>Milestone</i>	<i>Date</i>	<i>“Official”</i>
FDR for JEM1	Dec 2002	(Oct 2002)
Start CP/JEP sub-system tests	Mar 2003	(Oct 2002)
PRR for PPr MCM	Apr 2003	(Nov 2003)
PRR for PPr ASIC	Jul 2003	(Oct 2003)
PDR for ROD-0	Mar 2003	(Mar 2003)
Start full Slice Tests	Oct 2003	(Mar 2003)
Finish HD Slice Tests – Phase 1	Jan 2004	(Jul 2003)
Finish HD Slice Tests – Phase 2	Mar 2004	(Dec 2003)
FDR for Processor Backplane (PB)	May 2004	(Jan 2004)
FDR for TCM	May 2004	(Jan 2004)
FDR for PPM	May 2004	(Jan 2004)
PRR for PPM	Jun 2004	(Feb 2004)
FDR for CPM	Jun 2004	(Feb 2004)
PRR for TCM	Jun 2004	(Feb 2004)
PRR for Processor Backplane (PB)	Jun 2004	(Feb 2004)
PRR for CPM	Jul 2004	(Mar 2004)
FDR for JEM	Jul 2004	(Mar 2004)
PRR for JEM	Jul 2005	(Apr 2004)
FDR for CMM	Jul 2005	(Apr 2004)
FDR for ROD-0	Jul 2005	(Apr 2004)
PRR for CMM	Aug 2005	(May 2004)
PRR for ROD-0	Aug 2005	(May 2004)
Sub-systems assembled for System Tests	Dec 2004	(Oct 2004)
Finish PPr test programme	Jan 2006	(Apr 2005)
Finish CP/JEP test programmes	Jan 2006	(Oct 2005)
Finish PPr-Calorimeters integration	Jul 2006	(Oct 2005)
Calorimeter trigger available in situ	Aug 2006	(Apr 2006)

Conclusions

- ◆ Several ideas adopted to accelerate the PPr programme:
 - ◆ RAL picks up at least two design areas – TCM VME64X Adapter Link Card (*needed anyway for ROD crate*) and PPM Rear G-link Transmitter Module (*DAQ to RODs*) – **RGTM**
 - ◆ Re-design DAQ architecture to use CP/JEP RODs – now renamed **RODs**
 - ◆ Simplify ReM-FPGA firmware on PPM to transmit only raw data – **no compression**
 - ◆ Populate first PPM with only 2-3 *MCMs (8-12 channels)*
- ◆ Begin preparing ROD-0 specification ASAP → PDR, and start design as soon as engineer is available
- ◆ Change balance of Slice Tests to focus more on UK sub-system tests
- ◆ They will evolve into full Slice Tests as/when new modules (*PPMs, RODs*) become available
- ◆ Programme still looks very stretched, but viable