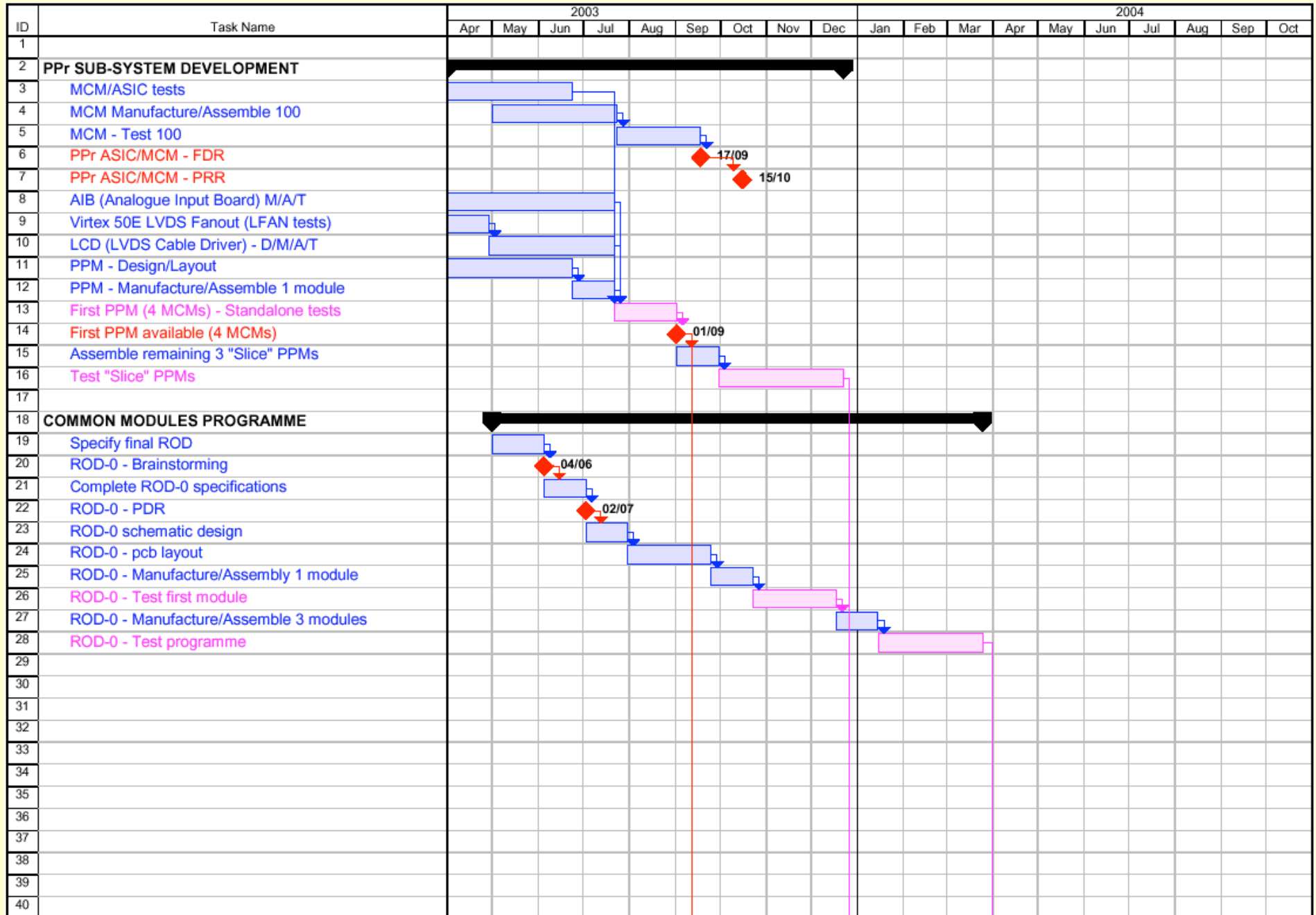


Hardware Schedules

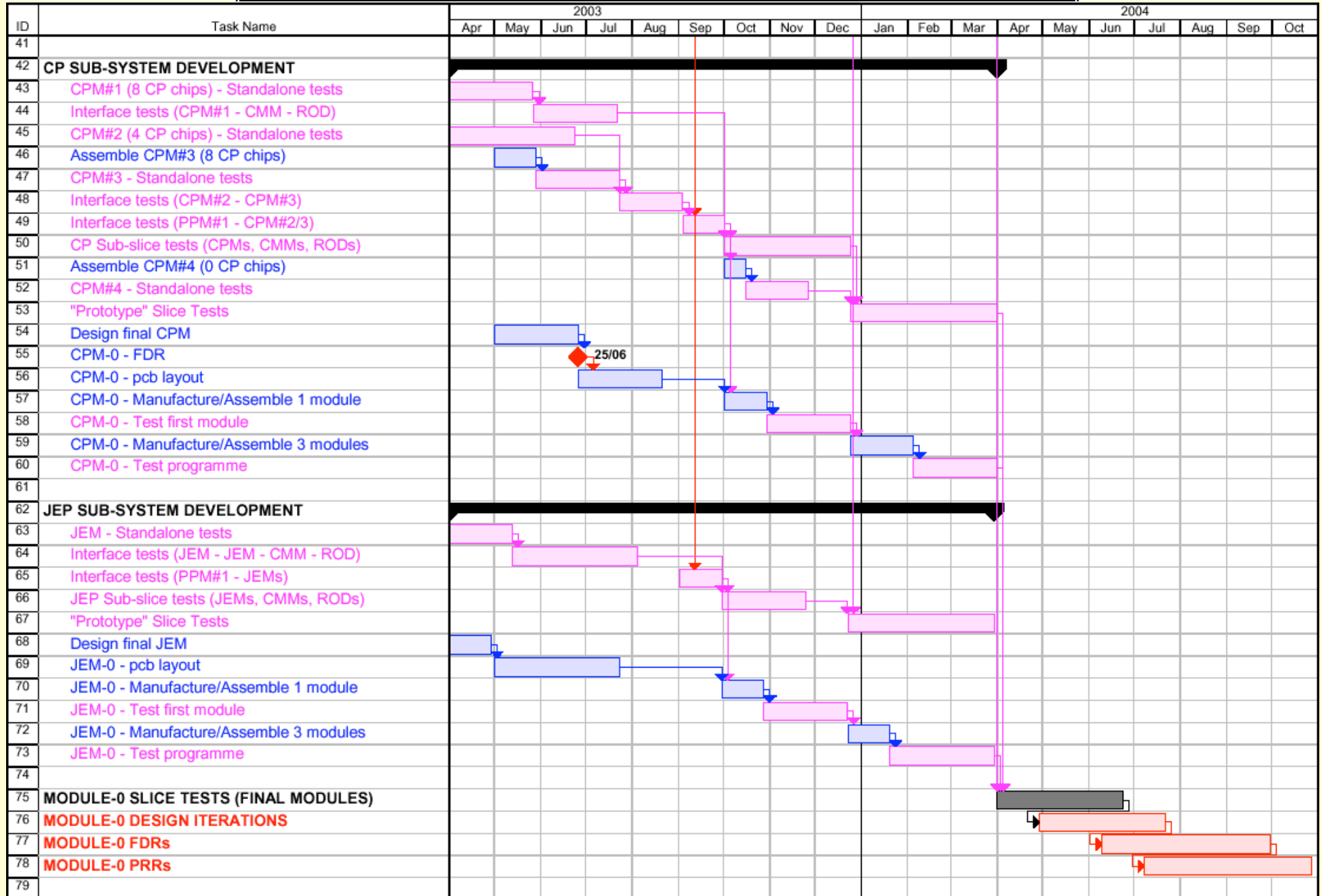


(time dilation has ended)

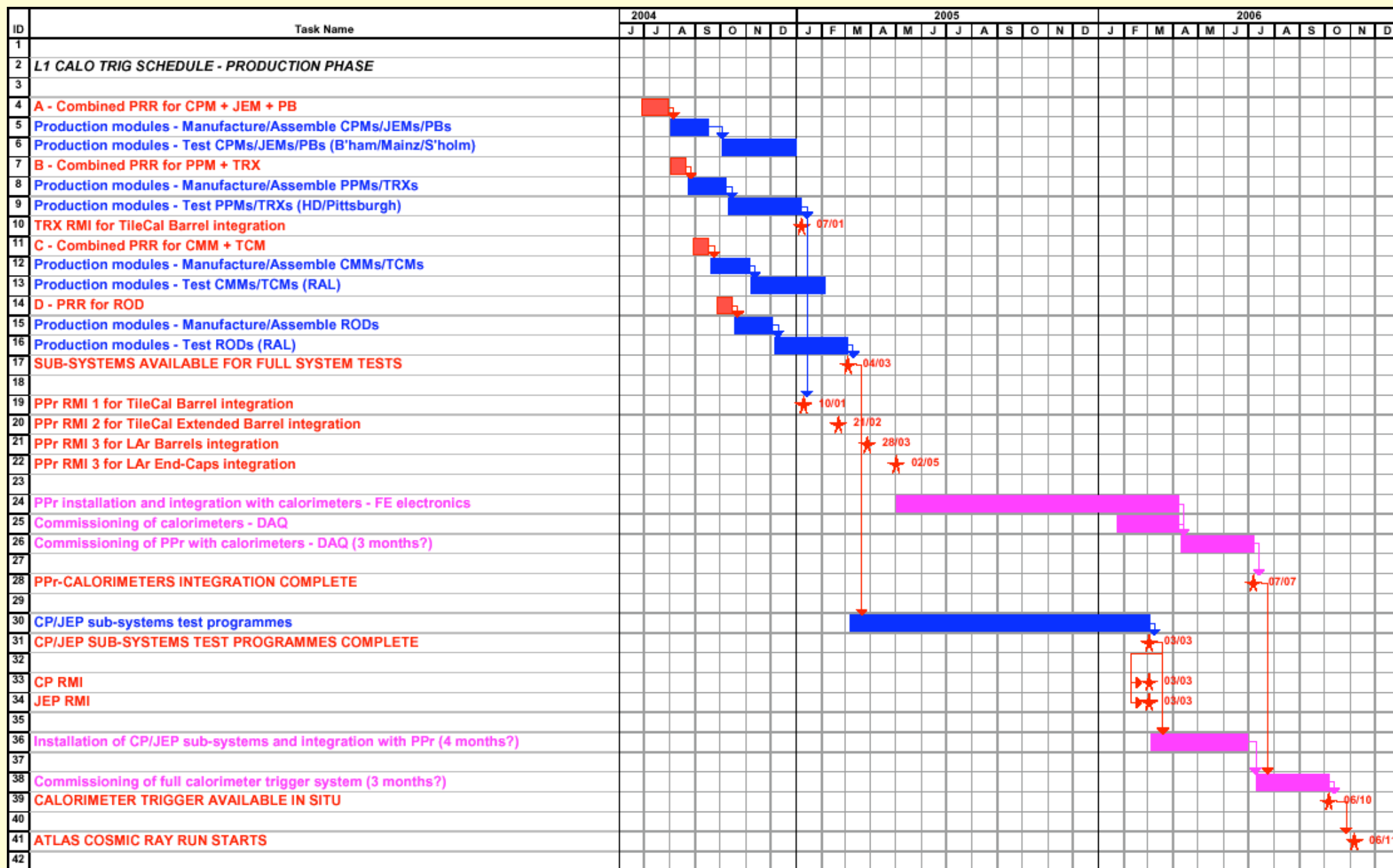
Pre-Slice – 1



Pre-Slice – 2



Post-Slice



Some scary (unofficial) milestones ...

- ◆ **Start PRRs for all final modules** **July 2004 (14 months)**
- ◆ **All sub-systems built & ready for test** **March 2005 (22 months)**
- ◆ **Installation & integration of PPr** **May 2005 (24 months)**
- ◆ **Installation of fully-tested CP & JEP** **March 2006 (34 months)**
- ◆ **Full calorimeter trigger system available** **October 2006 (41 months)**