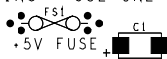




R1  
R2  
WARNING - USE ONE FUSE ONLY



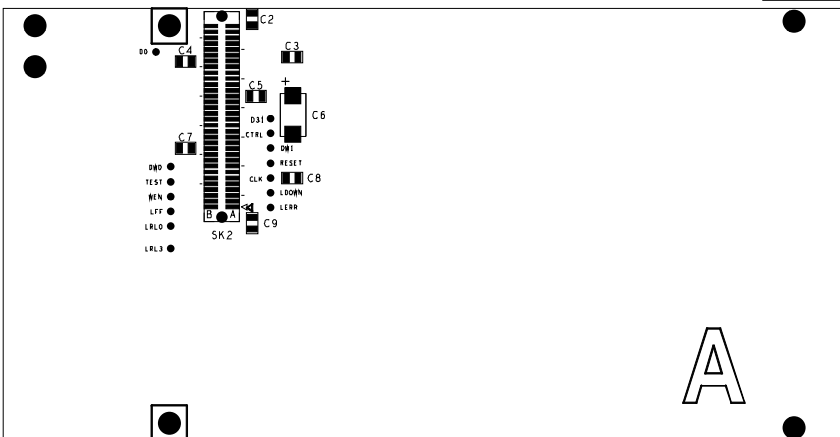
ENSURE CORRECT FUSE INSTALLED  
BEFORE POWER ON

REAR TRANSITION MODULE  
ATLAS CALORIMETER LEVEL 1 TRIGGER

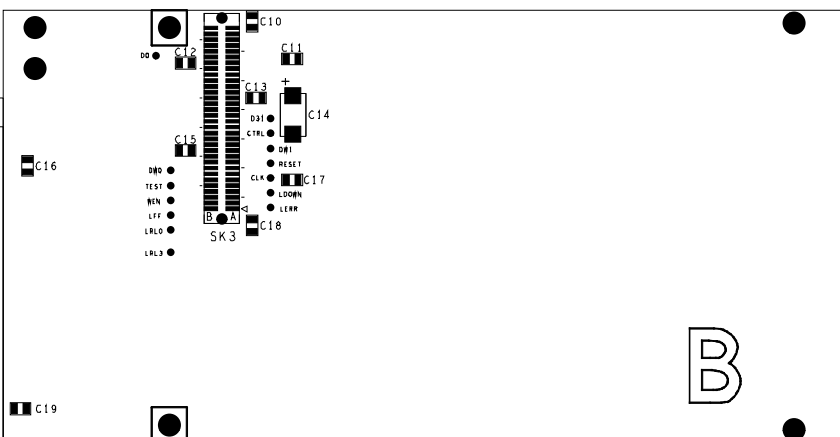
©CCLRC 2004

PC3276M/1  
G

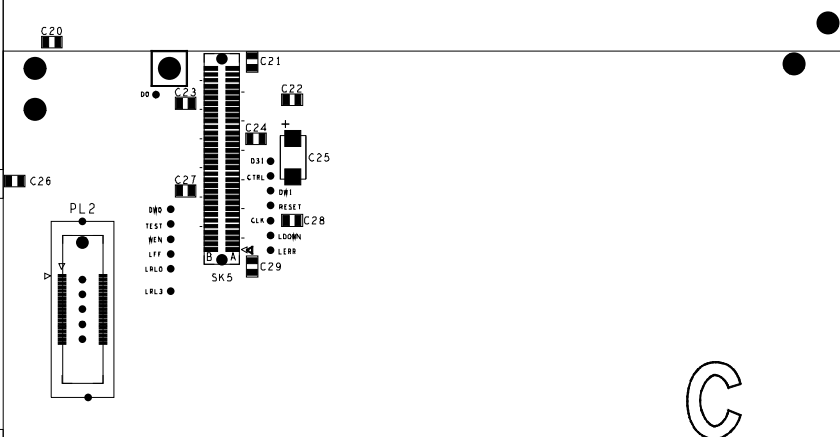
SK1



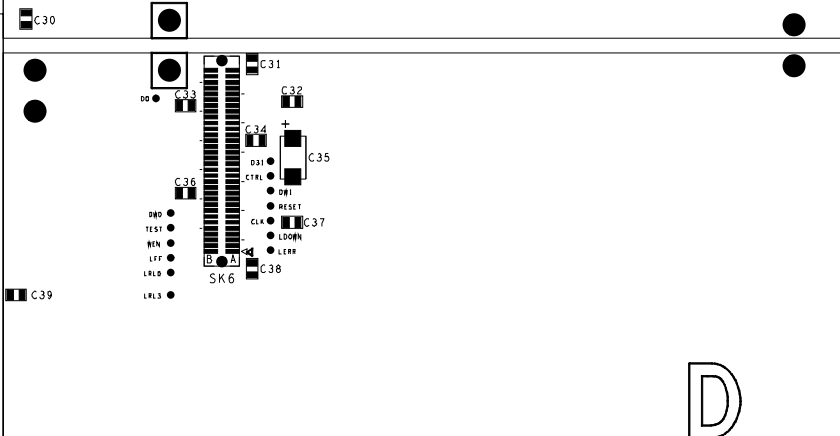
A



B



C



D

R3  
R4  
C40

