

BARREL  
CABLE\_1 (B1)

J1

50	B1_GLOBAL_SH
49	B1_MT1_N
48	B1_MT2_N
47	B1_MT3_N
46	B1_MT4_N
45	B1_MT5_N
44	B1_MT6_N
43	B1_CT1_N
42	B1_CT2_N
41	B1_CT3_N
40	B1_CT4_N
39	B1_CT5_N
38	B1_CT6_N
37	B1_CT7_N
36	B1_CT8_N
35	B1_CT9_N
34	
33	B1_MT1_SH
32	B1_MT2_SH
31	B1_MT3_SH
30	B1_MT4_SH
29	B1_MT5_SH
28	B1_MT6_SH
27	B1_CT1_SH
26	B1_CT2_SH
25	B1_CT3_SH
24	B1_CT4_SH
23	B1_CT5_SH
22	B1_CT6_SH
21	B1_CT7_SH
20	B1_CT8_SH
19	B1_CT9_SH
18	
17	
16	B1_MT1_P
15	B1_MT2_P
14	B1_MT3_P
13	B1_MT4_P
12	B1_MT5_P
11	B1_MT6_P
10	B1_CT1_P
9	B1_CT2_P
8	B1_CT3_P
7	B1_CT4_P
6	B1_CT5_P
5	B1_CT6_P
4	B1_CT7_P
3	B1_CT8_P
2	B1_CT9_P
1	

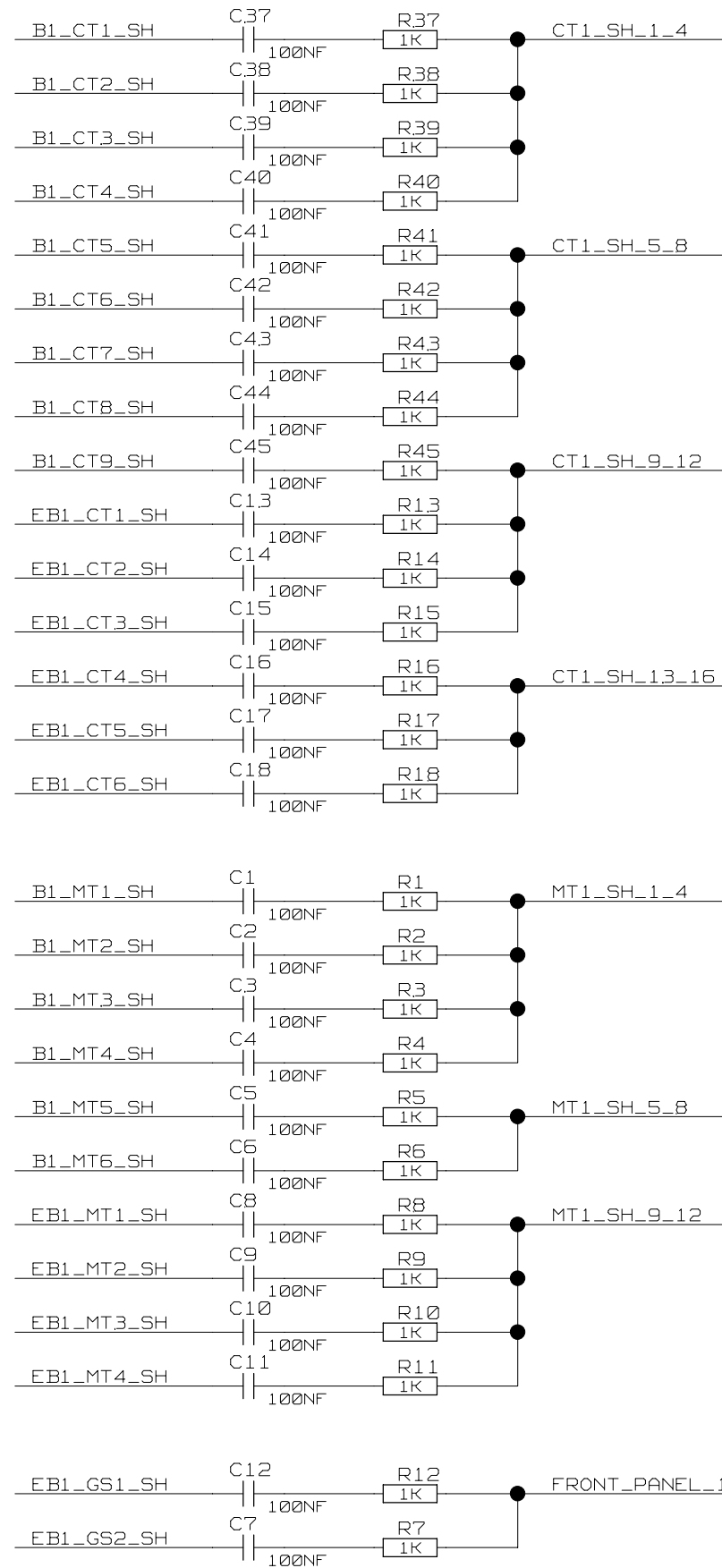
CANNONS50PFC

EXTENDED\_BARREL  
CABLE\_1 (EB1)

J3

50	EB1_GLOBAL_SH
49	
48	EB1_GS2_N
47	EB1_MT1_N
46	EB1_MT2_N
45	EB1_MT3_N
44	EB1_MT4_N
43	
42	
41	EB1_GS1_N
40	EB1_CT1_N
39	EB1_CT2_N
38	EB1_CT3_N
37	EB1_CT4_N
36	EB1_CT5_N
35	EB1_CT6_N
34	
33	
32	EB1_GS2_SH
31	EB1_MT1_SH
30	EB1_MT2_SH
29	EB1_MT3_SH
28	EB1_MT4_SH
27	
26	
25	EB1_GS1_SH
24	EB1_CT1_SH
23	EB1_CT2_SH
22	EB1_CT3_SH
21	EB1_CT4_SH
20	EB1_CT5_SH
19	EB1_CT6_SH
18	
17	
16	
15	EB1_GS2_P
14	EB1_MT1_P
13	EB1_MT2_P
12	EB1_MT3_P
11	EB1_MT4_P
10	
9	
8	EB1_GS1_P
7	EB1_CT1_P
6	EB1_CT2_P
5	EB1_CT3_P
4	EB1_CT4_P
3	EB1_CT5_P
2	EB1_CT6_P
1	

CANNONS50PFC



CALORIMETER\_TRIGGER

CABLE\_1 (CT1)

J4

DSUBC37F

1	CT1_SH_1_4
2	B1_CT1_P
3	B1_CT2_P
4	B1_CT3_P
5	B1_CT4_P
6	B1_CT5_P
7	B1_CT6_P
8	B1_CT7_P
9	B1_CT8_P
10	CT1_GLOBAL_SH
11	B1_CT9_P
12	EB1_CT1_P
13	EB1_CT2_P
14	EB1_CT3_P
15	EB1_CT4_P
16	EB1_CT5_P
17	EB1_CT6_P
18	
19	CT1_SH_9_12
20	CT1_SH_5_8
21	B1_CT1_N
22	B1_CT2_N
23	B1_CT3_N
24	B1_CT4_N
25	B1_CT5_N
26	B1_CT6_N
27	B1_CT7_N
28	B1_CT8_N
29	B1_CT9_N
30	EB1_CT1_N
31	EB1_CT2_N
32	EB1_CT3_N
33	EB1_CT4_N
34	EB1_CT5_N
35	EB1_CT6_N
36	
37	CT1_SH_13_16

MUON\_TRIGGER

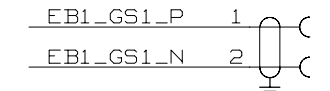
CABLE\_1 (MT1)

J2

DSUBC37F

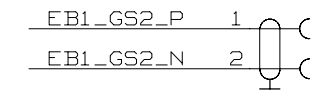
1	MT1_SH_1_4
2	B1_MT1_P
3	B1_MT2_P
4	B1_MT3_P
5	B1_MT4_P
6	B1_MT5_P
7	B1_MT6_P
8	EB1_MT1_P
9	EB1_MT2_P
10	MT1_GLOBAL_SH
11	EB1_MT3_P
12	EB1_MT4_P
13	
14	
15	
16	
17	
18	
19	MT1_SH_9_12
20	MT1_SH_5_8
21	B1_MT1_N
22	B1_MT2_N
23	B1_MT3_N
24	B1_MT4_N
25	B1_MT5_N
26	B1_MT6_N
27	EB1_MT1_N
28	EB1_MT2_N
29	EB1_MT3_N
30	EB1_MT4_N
31	
32	
33	
34	
35	
36	
37	

GND=GND1  
LM2  
PLEM02-00B



LEMO: EPG.00.302.NLN

LM1  
PLEM02-00B



GND=GND1

CONNECTOR BODIES  
CONNECTED TO FRONT\_PANEL\_1

REF: \_DRAWING\_ TCPP

TCPP

ETUDE:	PAGE: 1/2
DESSIN:	DATE:
LAST_MODIFIED=Mon Nov 10 14:40:48 2003	

BARREL  
CABLE\_2 (B2)

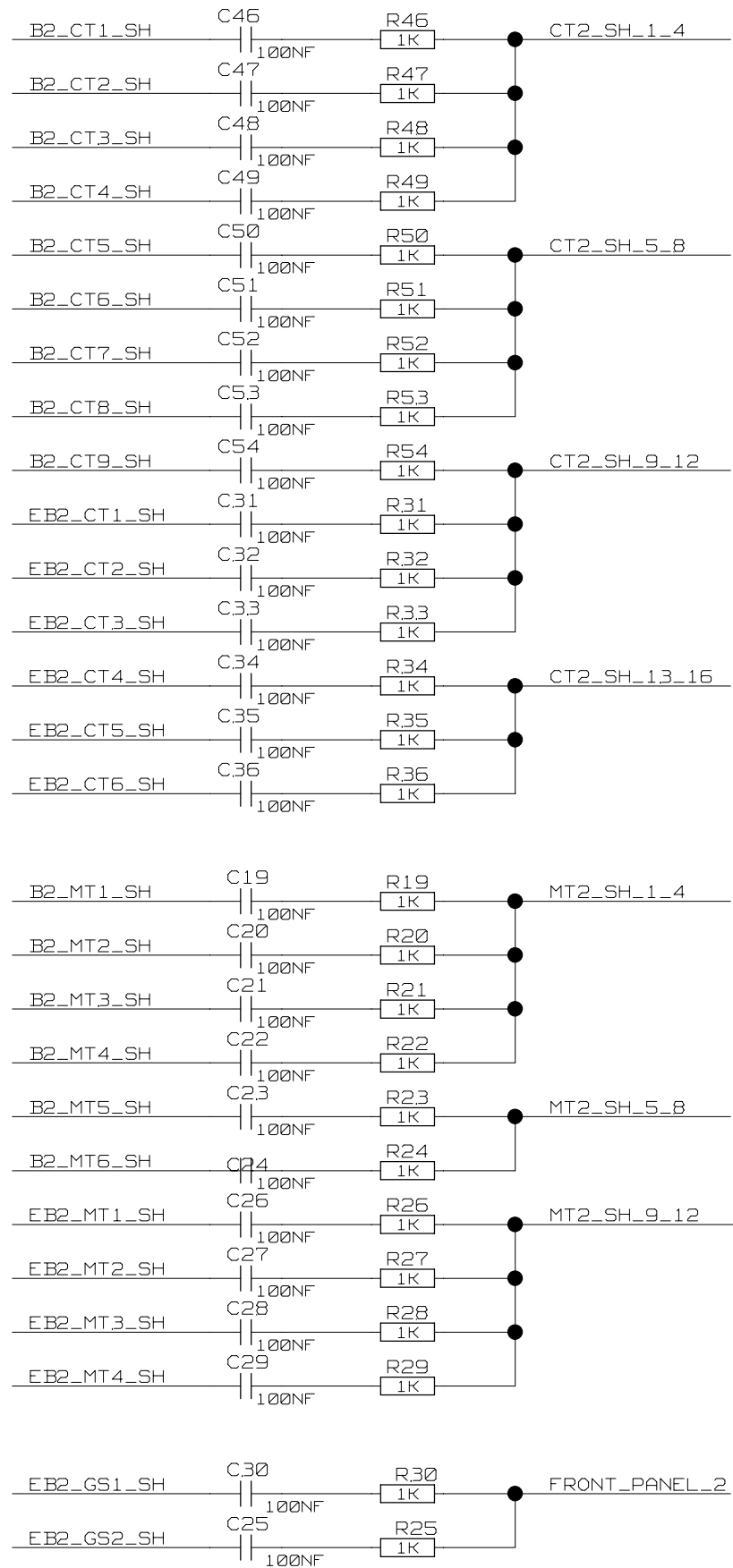
EXTENDED\_BARREL  
CABLE\_2 (EB2)

J5

50	B2_GLOBAL_SH
49	B2_MT1_N
48	B2_MT2_N
47	B2_MT3_N
46	B2_MT4_N
45	B2_MT5_N
44	B2_MT6_N
43	B2_CT1_N
42	B2_CT2_N
41	B2_CT3_N
40	B2_CT4_N
39	B2_CT5_N
38	B2_CT6_N
37	B2_CT7_N
36	B2_CT8_N
35	B2_CT9_N
34	
33	B2_MT1_SH
32	B2_MT2_SH
31	B2_MT3_SH
30	B2_MT4_SH
29	B2_MT5_SH
28	B2_MT6_SH
27	B2_CT1_SH
26	B2_CT2_SH
25	B2_CT3_SH
24	B2_CT4_SH
23	B2_CT5_SH
22	B2_CT6_SH
21	B2_CT7_SH
20	B2_CT8_SH
19	B2_CT9_SH
18	
17	
16	B2_MT1_P
15	B2_MT2_P
14	B2_MT3_P
13	B2_MT4_P
12	B2_MT5_P
11	B2_MT6_P
10	B2_CT1_P
9	B2_CT2_P
8	B2_CT3_P
7	B2_CT4_P
6	B2_CT5_P
5	B2_CT6_P
4	B2_CT7_P
3	B2_CT8_P
2	B2_CT9_P
1	

J7

50	EB2_GLOBAL_SH
49	EB2_GS2_N
48	EB2_MT1_N
47	EB2_MT2_N
46	EB2_MT3_N
45	EB2_MT4_N
44	EB2_MT3_N
43	EB2_MT4_N
42	
41	EB2_GS1_N
40	EB2_CT1_N
39	EB2_CT2_N
38	EB2_CT3_N
37	EB2_CT4_N
36	EB2_CT5_N
35	EB2_CT6_N
34	
33	
32	EB2_GS2_SH
31	EB2_MT1_SH
30	EB2_MT2_SH
29	EB2_MT3_SH
28	EB2_MT4_SH
27	EB2_MT4_SH
26	
25	EB2_GS1_SH
24	EB2_CT1_SH
23	EB2_CT2_SH
22	EB2_CT3_SH
21	EB2_CT4_SH
20	EB2_CT5_SH
19	EB2_CT6_SH
18	
17	
16	
15	EB2_GS2_P
14	EB2_MT1_P
13	EB2_MT2_P
12	EB2_MT3_P
11	EB2_MT4_P
10	EB2_MT4_P
9	
8	EB2_GS1_P
7	EB2_CT1_P
6	EB2_CT2_P
5	EB2_CT3_P
4	EB2_CT4_P
3	EB2_CT5_P
2	EB2_CT6_P
1	



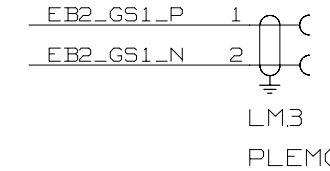
CALORIMETER\_TRIGGER  
CABLE\_2 (CT2)  
J8  
DSUBC37F

1	CT2_SH_1_4
2	B2_CT1_P
3	B2_CT2_P
4	B2_CT3_P
5	B2_CT4_P
6	B2_CT5_P
7	B2_CT6_P
8	B2_CT7_P
9	B2_CT8_P
10	CT2_GLOBAL_SH
11	B2_CT9_P
12	EB2_CT1_P
13	EB2_CT2_P
14	EB2_CT3_P
15	EB2_CT4_P
16	EB2_CT5_P
17	EB2_CT6_P
18	
19	CT2_SH_9_12
20	CT2_SH_5_8
21	B2_CT1_N
22	B2_CT2_N
23	B2_CT3_N
24	B2_CT4_N
25	B2_CT5_N
26	B2_CT6_N
27	B2_CT7_N
28	B2_CT8_N
29	B2_CT9_N
30	EB2_CT1_N
31	EB2_CT2_N
32	EB2_CT3_N
33	EB2_CT4_N
34	EB2_CT5_N
35	EB2_CT6_N
36	
37	CT2_SH_13_16

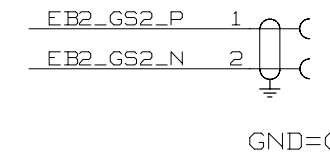
MUON\_TRIGGER  
CABLE\_2 (MT2)  
J6  
DSUBC37F

1	MT2_SH_1_4
2	B2_MT1_P
3	B2_MT2_P
4	B2_MT3_P
5	B2_MT4_P
6	B2_MT5_P
7	B2_MT6_P
8	EB2_MT1_P
9	EB2_MT2_P
10	MT2_GLOBAL_SH
11	EB2_MT3_P
12	EB2_MT4_P
13	
14	
15	
16	
17	
18	
19	MT2_SH_9_12
20	MT2_SH_5_8
21	B2_MT1_N
22	B2_MT2_N
23	B2_MT3_N
24	B2_MT4_N
25	B2_MT5_N
26	B2_MT6_N
27	EB2_MT1_N
28	EB2_MT2_N
29	EB2_MT3_N
30	EB2_MT4_N
31	
32	
33	
34	
35	
36	
37	

GND=GND2  
LM4  
PLEM02-00B



LEMO: EPG.00.302.NLN



CONNECTOR BODIES  
CONNECTED TO FRONT\_PANEL\_2

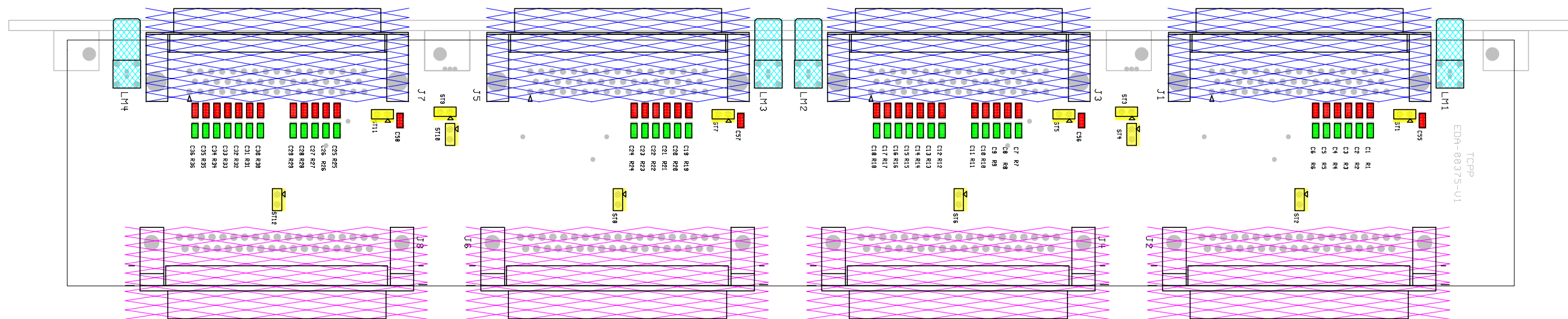
REF: \_DRAWING\_ TCPP

TCPP

ETUDE:	PAGE: 2/2
DESSIN:	DATE:
LAST_MODIFIED=Mon Nov 10 14:40:01 2003	

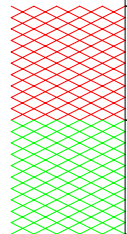
(CONNECTED TO FRONT\_PANEL\_1  
THROUGH PHYSICAL FRONT PANEL)

Device	Qty	Value	Tol	Power	Ref part
10.03.04.500.2	40	100nF		50V	C1-C36, C55-C58
11.24.05.300.6	36	1K	1%	1/4W	R1-R36
07.88.24-VKDEG	12	JUMPER			ST1-ST12
09.21.22.170.3	4	SUBD50FC			J1, J3, J5, J7
09.21.22.130.1	4	SUBD37FC			J2, J4, J6, J8
09.31.28.007.2	4	PLEMO2-00B			LM1-LM4

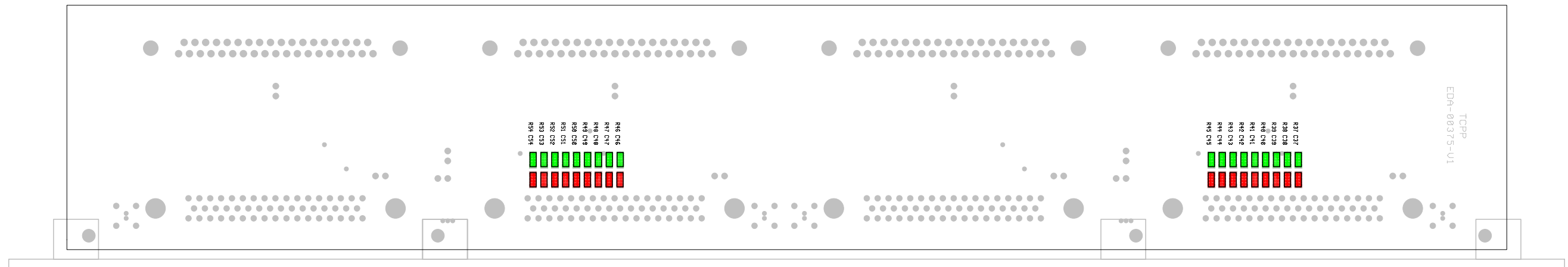


SERIGRAPHIE C-SIDE

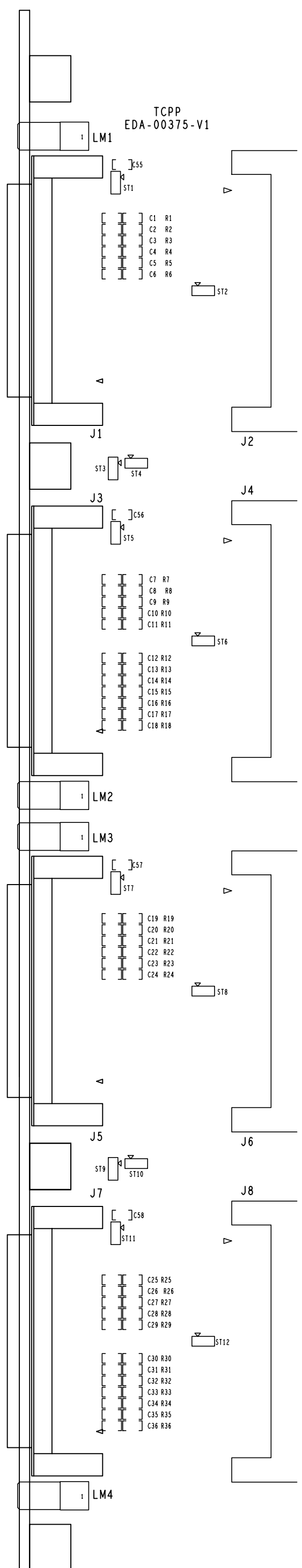
Device	Qty	Value	Tol	Power	Ref part
10.03.04.500.2	18	100nF		50V	C37-C54
11.24.05.300.6	18	1K	1%	1/4W	R37-R54



SERIGRAPHIE M-SIDE



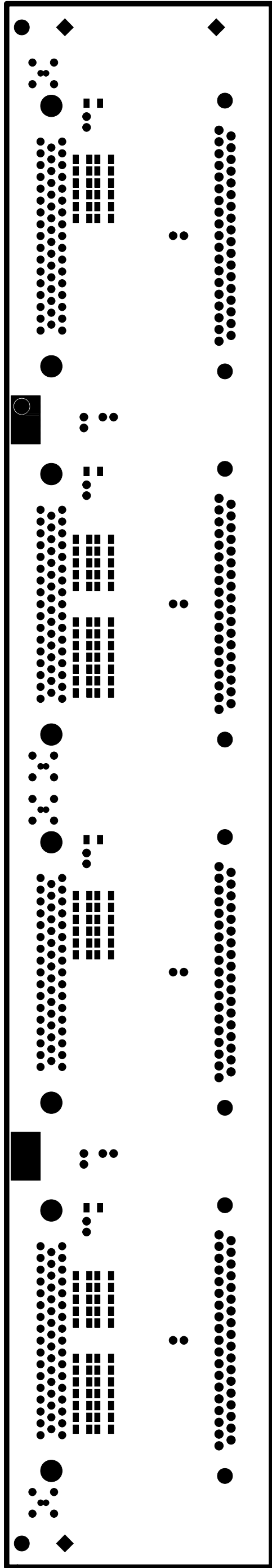
TCPP  
EDA-00375-V1



EDA-00375  
DESS AMEC-SPIE WB  
DATE 23/10/2003

INDICE V1  
NBRE DE COUCHE : 4  
EP. DU CUIVRE : 35u  
EP. DU CIRCUIT : 16/10e  
MATERIE DU CI : EPOXY

SERIGRAPHIE C-SIDE



EDA-00375

INDICE  
V1

NBRE DE COUCHE : 4

EP. DU CUIVRE : 35u

EP. DU CIRCUIT : 16/10e

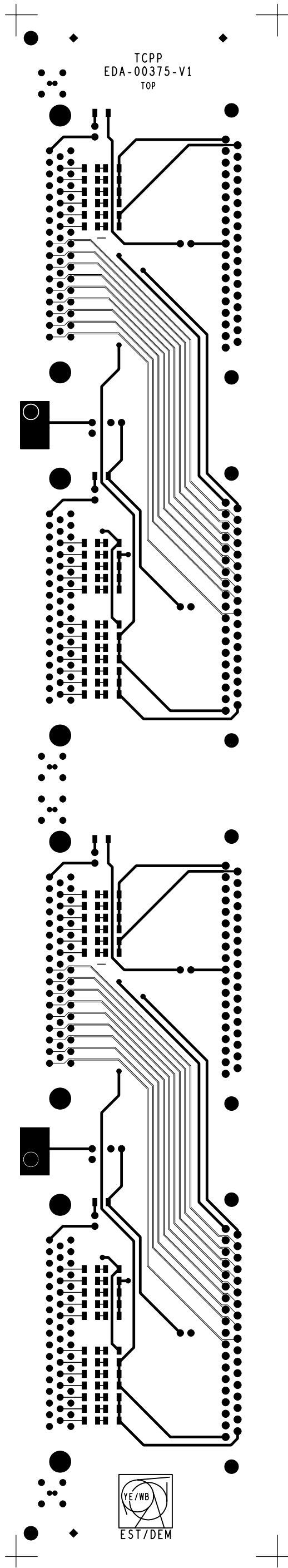
MATERIERE DU CI : EPOXY

LAQUE ARRET DE SOUDURE C-SIDE

EST/DEM


DESS AMEC-SPIE WB

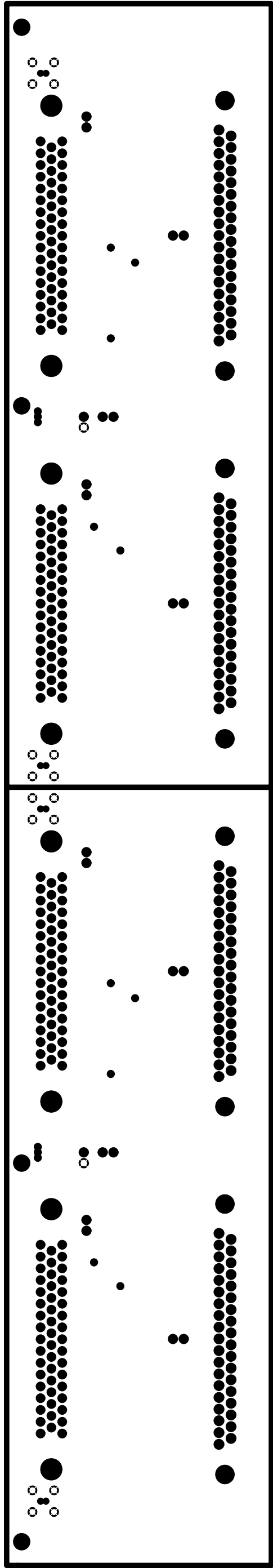
DATE 23/10/2003



TCPP  
EDA-00375-V1  
TOP

YE/WB  
EST/DEM

 EST/DEM	EDA-00375	INDICE V1	NBRE DE COUCHE : 4	FACE COMPOSANTS
	DESS AMEC-SPIE WB		EP. DU CUIVRE : 35u	
	DATE 23/10/2003		EP. DU CIRCUIT : 16/10e	
			MATERIERE DU CI : EPOXY	
			1	

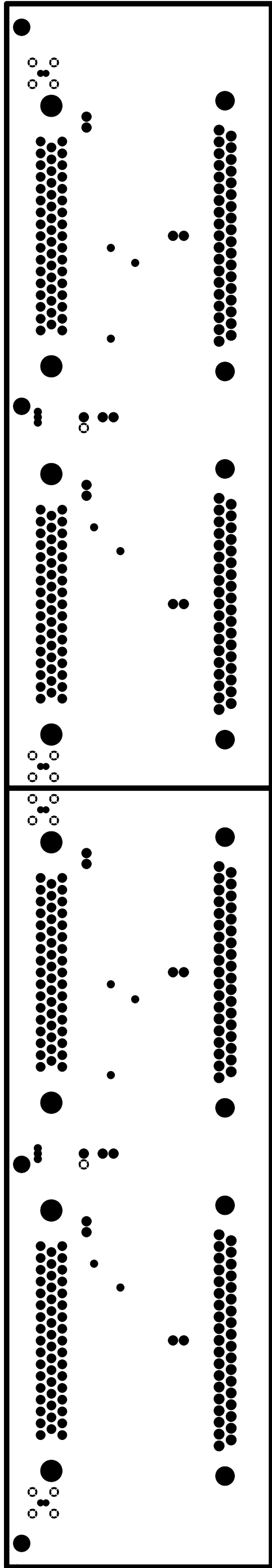



EST/DEM	DATE	S3\10\5003	MATERIERE DU CI : EPOXY
	DESS	AMEC-SPIE WB	EP. DU CIRCUIT : 16\10e
	INDEX	V1	EP. DU CUIVRE : 32u
			MBRE DE COUCHE : 4



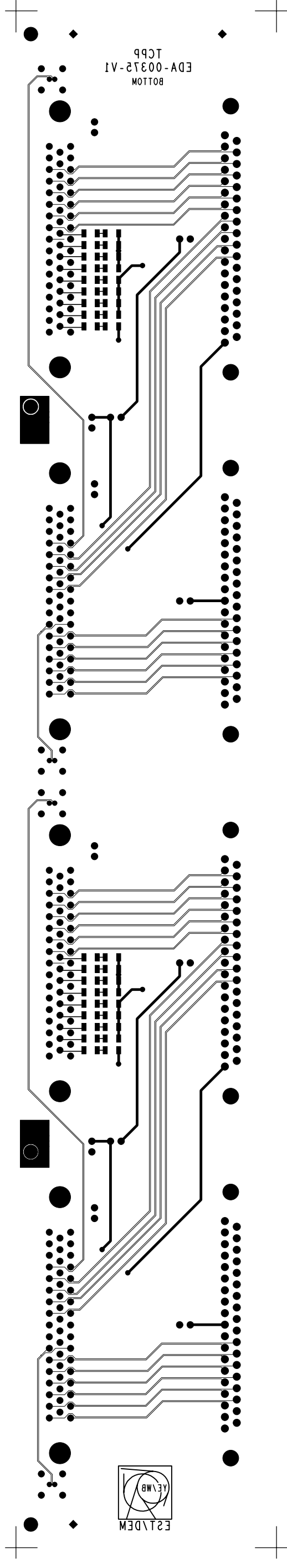
PLAN GND





 EST/DEM	EDA-00375	INDICE V1	NBRE DE COUCHE : 4
	DESS AMEC-SPIE WB		EP. DU CUIVRE : 35u
	DATE 23/10/2003		EP. DU CIRCUIT : 16/10e
			MATERIERE DU CI : EPOXY

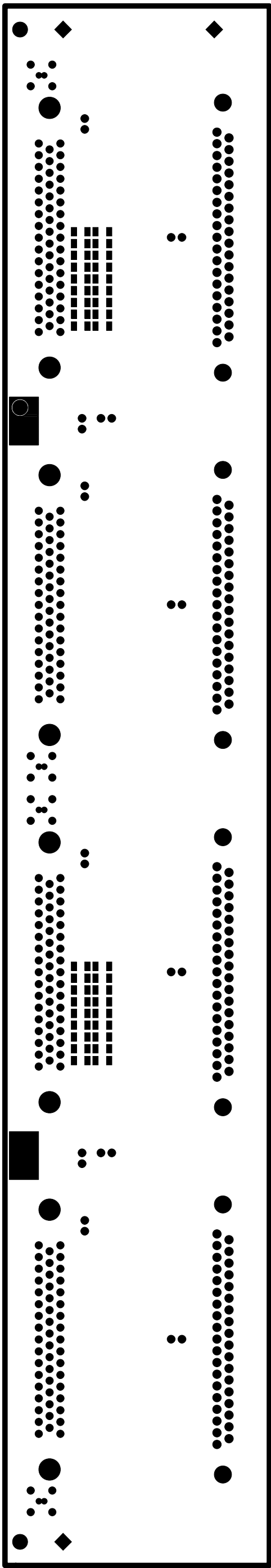
000 0000



EST/DEM	DATE	S3/10/S003	MATERIE DU CI : EPOXY
DES	AMC-SP1E WB	EP. DU CIRCUIT : 16/10e	EP. DU CUIVRE : 32u
EDA-00375	V1	NBRE DE COUCHE : 4	INDICE



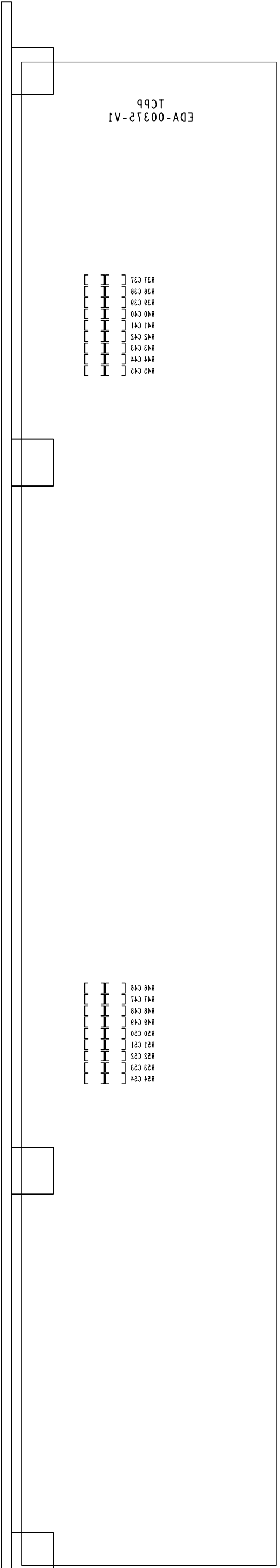
FACE SONDRES



EST/DEM	DATE	S3\10\5003	MATERIERE DU CI : EPOXY
	DESS	AMEC-SP1E WB	EP. DU CIRCUIT : 16\10e
		VI	EP. DU CUIVRE : 32u
			INDICE
			ED-00372
			MBRE DE COUCHE : 4



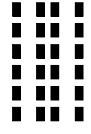
L'AOUE ARRET DE SONDURE W-2IDE



EST/DEM	DATE	S3\10\5003	MATERIERE DU CI : EPOXY
	DESS	AMEC-SPIE WB	EP. DU CIRCUIT : 16/10e
			EP. DU CUIRE : 32u
			MBRE DE COUCHE : 4
			VI
			INDICE

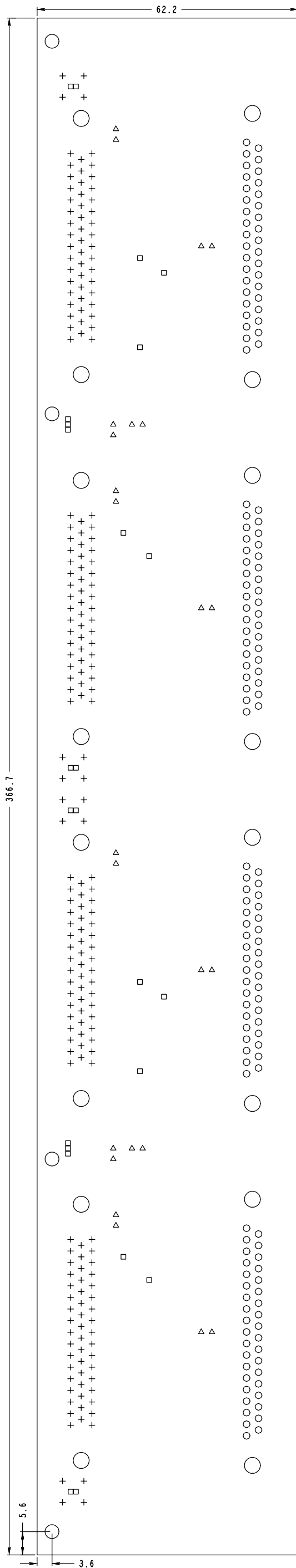


SERIEGRAPHIE W-2IDE






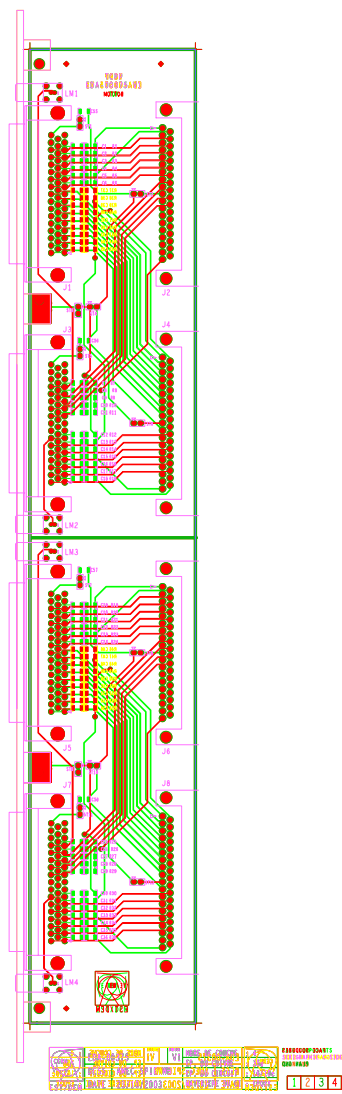


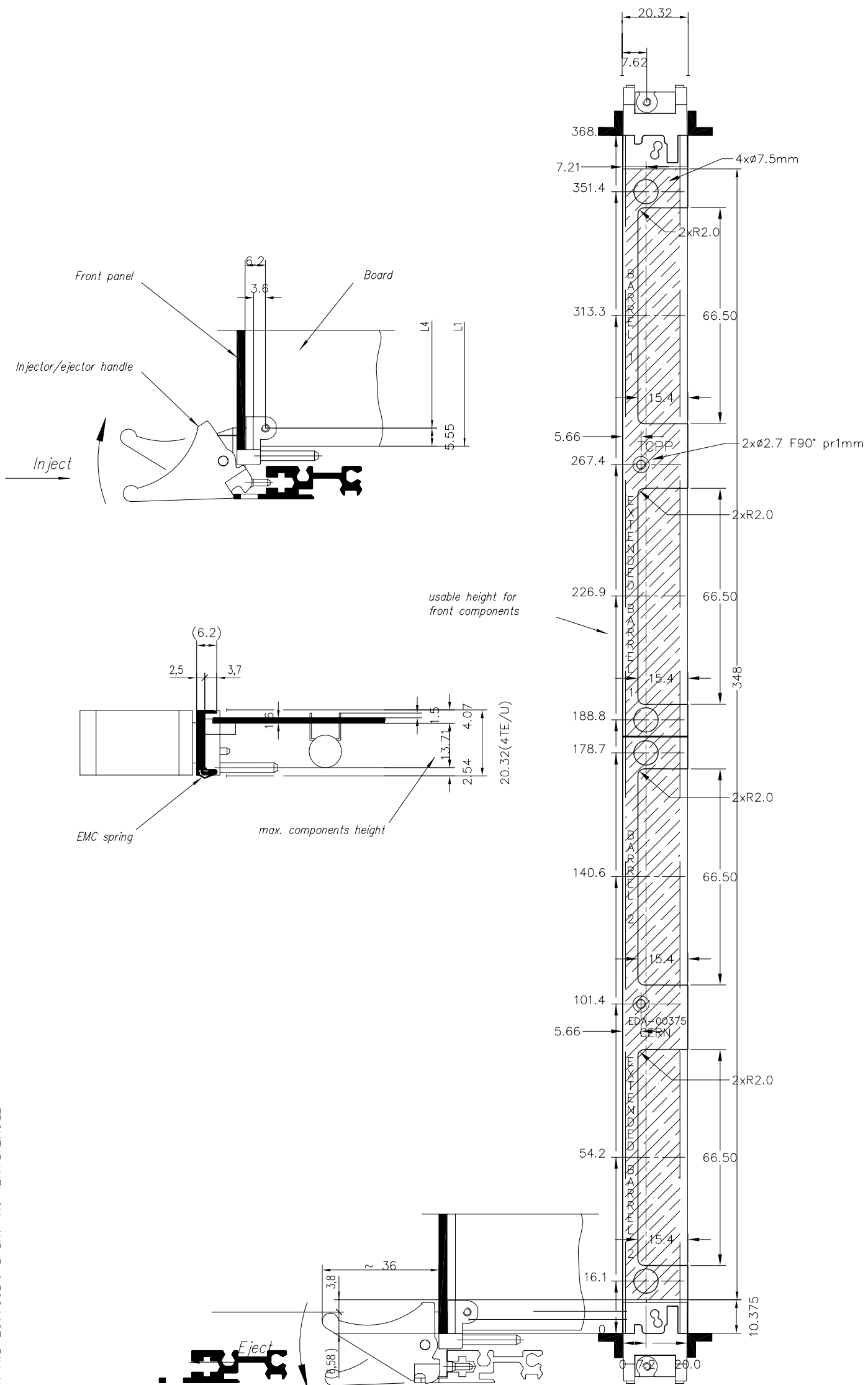


METRIC DRILL LEGEND			
ALL UNITS ARE IN MILLIMETERS			
Figure	Dia.	TYPE	QTY
□	0.60	PLATED	24
+	0.80	PLATED	216
△	0.90	PLATED	24
○	1.00	PLATED	148
○	2.70	PLATED	4
○	3.20	PLATED	16

 EST/DEM	EDA-00375	INDICE V1	NBRE DE COUCHE : 4
	DESS AMEC-SPIE WB		EP. DU CUIVRE : 35u
	DATE 23/10/2003		EP. DU CIRCUIT : 16/10e
			MATERIERE DU CI : EPOXY

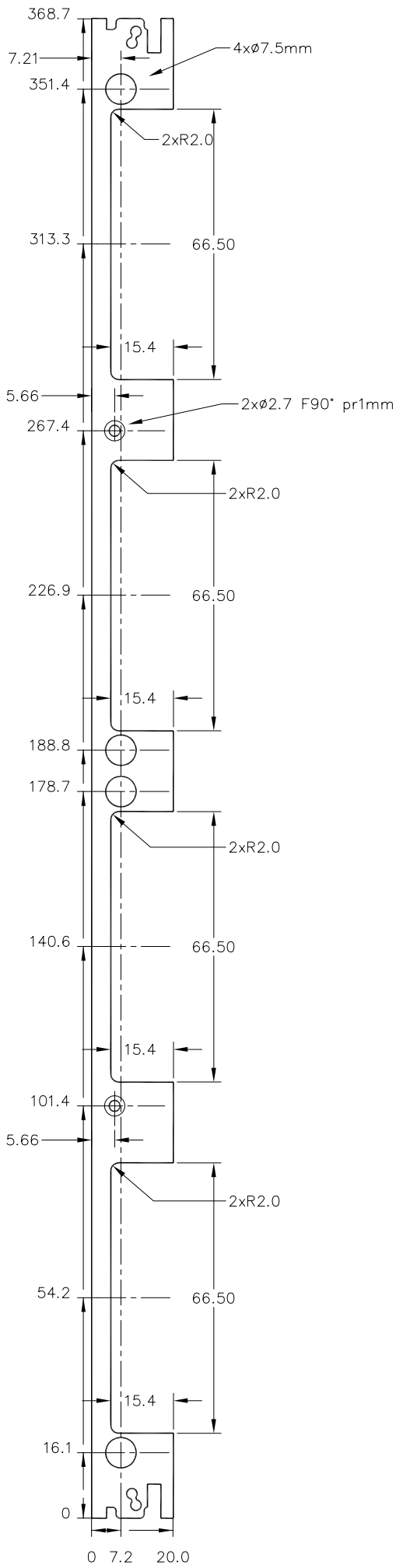







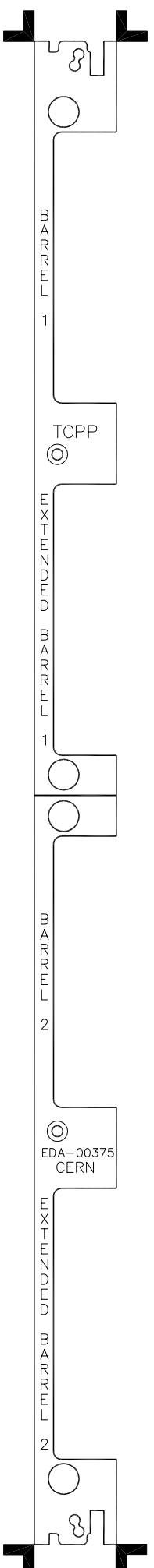
FRONT PANEL 9U-4HP Ref: 3684427-Rittal-Ripoc

		FRONT PANEL 9U-4HP	
		TOPP	
ORGANISATION EUROPÉENNE POUR LA RECHERCHE NUCLÉAIRE EUROPEAN ORGANIZATION FOR NUCLEAR RESEARCH GENEVE		REEMPLACEMENT	
ECHELLE SCALE	NOM DATE	DESSINE AMEC-SPIE MB 03/11/2003	
VU	CONTRÔLE Y. ERMOLINE	EDA-00375	
INDICE V1			




FRONT PANEL 9U-4HP Ref: 3684427-Rittal-Ripoc

		ORGANISATION EUROPÉENNE POUR LA RECHERCHE NUCLÉAIRE EUROPEAN ORGANIZATION FOR NUCLEAR RESEARCH GENEVE	
FRONT PANEL DRILLING		TCPP	
ECHELLE SCALE		NOM	
DESSINE CONTROLÉ VU		AMEC-SPIE MB 03/11/2003 Y. ERMOLINE	
REMPLIAGE		DATE	
EDA-00375		V1	



FRONT PANEL 9U-4HP Ref: 3684427-Rittal-Ripoc

 ORGANISATION EUROPÉENNE POUR LA RECHERCHE NUCLÉAIRE EUROPEAN ORGANIZATION FOR NUCLEAR RESEARCH GENEVE		FRONT PANEL ENGRAVING		ECHELLE SCALE	
TCP		NOM		DATE	
FRONT PANEL ENGRAVING		DESSINE		AMC-SPIE MB 03/11/2003	
		CONTRÔLE		Y. ERMOLINE	
		VU			
		REEMPLAGE			
EDA-00375				INDICE	
				V1	



B  
A  
R  
R  
E  
L  
1

TCPP

E  
X  
T  
E  
N  
D  
E  
D  
B  
A  
R  
R  
E  
L  
1

---

B  
A  
R  
R  
E  
L  
2

EDA-00375  
CERN

E  
X  
T  
E  
N  
D  
E  
D  
B  
A  
R  
R  
E  
L  
2

