



LANCASTER  
UNIVERSITY



# ATLAS monitoring for sys-admins

Peter Love  
Department of Physics  
Lancaster University

# Common questions

## Jobs

- My site is idle, what's wrong?
- Send more pilots!
- Stop sending so many pilots!
- How can I install/remove an Athena release?
- How does my site performance compare to others?

## Data

- My storage is getting full, can Atlas please cleanup?
- My storage is empty, is something wrong with it?

# <http://panda.cern.ch/>

Quick guide to the Panda monitor

Configuration [Production](#) [Clouds](#) [Incidents](#) [DDM](#) [PandaMover](#) [AutoPilot](#) [Sites](#) [Releases](#) [Analysis](#) [Stats](#) [Physics data](#) [Usage](#) [ProdDash](#) [DDMDash](#)

Update

**Panda monitor**  
Times are in UTC

[Panda info and help](#)

Jobs - [search](#)  
States: [running](#), [defined](#), [waiting](#), [assigned](#), [activated](#), [finished](#), [failed](#)  
Types: [analysis](#), [prod](#), [install](#), [test](#)

Quick search  
Job   
Dataset   
Task request   
Task status   
File

Summaries  
Blocks:  days  
Errors:  days  
Nodes:  days  
Usage   days

Tasks - [search](#)  
[Generic Task Req](#)  
[EvGen Task Req](#)  
[CTBsim Task Req](#)  
[Task list](#)  
[New Tag](#)  
[Bug Report](#)  
[Task overview query](#)

Datasets - [search](#)  
[Popular datasets](#)  
[Aborted datasets](#)  
[Datasets Browser](#)

Datasets Distribution  
[Data Transfer Request](#)  
[DaTRI: User Requests](#)  
[AODs](#)

Not logged in. [List users](#)

## Quick guide to the Panda monitor

For Panda documentation and information on support and problem reporting see the [Panda info and user support](#) page.

### Monitor instances

**CERN: Primary production monitor at CERN**

### Top bar

**Production:** Panda Production Operations Dashboard. Summary of Panda production status  
**Clouds:** Organization and task assignment of clouds (Tier 1 + Tier 2/3s) processing Panda jobs  
**DDM:** Summary of DDM systems information and tools  
**PandaMover:** Panda DQ2 dataset mover status. Monitors Panda jobs that replicate datasets using dq2-cr.  
**AutoPilot:** Pilot submission system serving all of OSG and LCG  
**Sites:** Collection of grid-wide and site-level monitoring links  
**Analysis:** Information on Panda-based analysis using pathena  
**Physics data:** ATLAS data discovery and access info and tools for physicists  
**Usage:** CPU usage by user  
**ProdDash:** Link to the ARDA ATLAS production dashboard  
**DDMDash:** Link to the ARDA ATLAS DDM dashboard  
**List users:** On extreme right, lists Panda users and gives access to your Panda page

### Left bar

**Jobs running in Panda:** Job links at left list the running, activated (ready for pickup by a pilot), waiting (waiting for input data availability), assigned (brokered and waiting for completion of input data transfer to processing site), defined (awaiting brokerage), finished, failed and cancelled jobs. Analysis jobs (as opposed to managed production jobs) can be listed separately. The 'old archive' contains all finished/failed/cancelled jobs older than 3 days.

**Quick searches:** Enter a Panda job name or ID, dataset name or ID, or task name or ID into the appropriate field and hit return in order to do a quick lookup.

**Summaries:** Enter a day count in the desired summary field and hit return to bring up a summary covering the last N days. The 'blocks' summary shows the production datablocks (datasets) currently being processed in the production system, with details on where they are being processed, job states etc. The 'errors' summary shows overall production status at all Panda sites with details of the error conditions encountered. The 'nodes' summary shows worker nodes active at all production sites with statistics on processed jobs and states.

**Tasks:** Task request forms are provided for entering generic, event generation and CTB tasks. The full task list gives statistics on tasks by grid and a listing of all tasks. The task browser allows selection of tasks based on their metadata (physics type, production series, release, output type, etc.) with navigation to datasets associated with the task, where data availability and access information is provided.



<http://panda.cern.ch:25980/server/pandamon/query?dash=site>

Site UKI-NORTHGRID-LANCS-HEP

Configuration | Production | Clouds | Incidents | DDM | PandaMover | AutoPilot | **Sites** | Releases | Analysis | Stats | Physics data | Usage | ProdDash | DDMDash

0 min old [Update](#) Not logged in. [List users](#)

### Site UKI-NORTHGRID-LANCS-HEP

**UKI-NORTHGRID-LANCS-HEP**

**UKI-NORTHGRID-LANCS-HEP recent jobs:**  
List jobs: [running](#) [pending/active](#) [pending/defined](#) [finished](#) [failed](#) [all](#)

**Queues used by site:**  
[UKI-NORTHGRID-LANCS-HEP-fal-pygrid-44-q-lcgpbs](#)

**Worker nodes active in the last 3 days:** [49](#)

**Recent incidents:**  
2010-05-02 20:37:00 setonline: queue=UKI-NORTHGRID-LANCS-HEP-fal-pygrid-44-q-lcgpbs DN=peter love  
2010-05-02 20:36:47 setonline: queue=UKI-NORTHGRID-LANCS-HEP-fal-pygrid-44-q-lcgpbs DN=peter love [elog.12164](#)  
2010-05-02 10:06:55 setoffline: queue=UKI-NORTHGRID-LANCS-HEP-fal-pygrid-44-q-lcgpbs DN=peter love [elog.12164](#)  
2010-02-18 17:58:33 setonline: queue=UKI-NORTHGRID-LANCS-HEP-fal-pygrid-44-q-lcgpbs DN=peter love  
2010-01-04 10:07:49 setonline: queue=UKI-NORTHGRID-LANCS-HEP-fal-pygrid-44-q-lcgpbs DN=graeme stewart

**Releases and caches available at site:** (Caches are AtlasProduction unless otherwise indicated)

Release	Caches
<a href="#">15.6.9.8</a>	<a href="#">BTagging-15.6.9.8.1</a>
<a href="#">15.6.9.3</a>	<a href="#">WZBenchmarks-15.6.9.3.1</a>
<a href="#">15.6.9</a>	<a href="#">15.6.9.1</a> <a href="#">15.6.9.10</a> <a href="#">15.6.9.11</a> <a href="#">15.6.9.12</a> <a href="#">15.6.9.13</a> <a href="#">15.6.9.3</a> <a href="#">15.6.9.4</a> <a href="#">15.6.9.6</a> <a href="#">15.6.9.7</a> <a href="#">15.6.9.8</a> <a href="#">15.6.9.9</a>
<a href="#">15.6.8.6</a>	<a href="#">BTagging-15.6.8.6.1</a>
<a href="#">15.6.8.2</a>	<a href="#">TopPhys-15.6.8.2.1</a> <a href="#">WZBenchmarks-15.6.8.2.2</a>
<a href="#">15.6.8</a>	<a href="#">15.6.8.10</a> <a href="#">15.6.8.11</a> <a href="#">15.6.8.12</a> <a href="#">15.6.8.2</a> <a href="#">15.6.8.4</a> <a href="#">15.6.8.5</a> <a href="#">15.6.8.6</a> <a href="#">15.6.8.7</a> <a href="#">15.6.8.8</a> <a href="#">15.6.8.9</a>
<a href="#">15.6.7</a>	<a href="#">15.6.7.4</a> <a href="#">15.6.7.5</a> <a href="#">15.6.7.7</a> <a href="#">15.6.7.8</a>
<a href="#">15.6.6</a>	<a href="#">15.6.6.1</a> <a href="#">15.6.6.3</a> <a href="#">15.6.6.4</a> <a href="#">15.6.6.5</a> <a href="#">15.6.6.6</a> <a href="#">15.6.6.7</a>
<a href="#">15.6.5.5</a>	<a href="#">WZBenchmarks-15.6.5.5.1</a>
<a href="#">15.6.5</a>	<a href="#">15.6.5.3</a> <a href="#">15.6.5.5</a>
<a href="#">15.6.3</a>	<a href="#">15.6.3.1</a> <a href="#">15.6.3.10</a> <a href="#">15.6.3.11</a> <a href="#">15.6.3.12</a> <a href="#">15.6.3.13</a> <a href="#">15.6.3.14</a> <a href="#">15.6.3.15</a> <a href="#">15.6.3.18</a> <a href="#">15.6.3.2</a> <a href="#">15.6.3.3</a> <a href="#">15.6.3.4</a> <a href="#">15.6.3.5</a> <a href="#">15.6.3.6</a> <a href="#">15.6.3.7</a> <a href="#">15.6.3.8</a> <a href="#">15.6.3.9</a>
<a href="#">15.6.10</a>	<a href="#">15.6.10.1</a> <a href="#">15.6.10.2</a>

12 min old [Update](#)

Not logged in. [List users](#)

**Panda monitor**  
Times are in UTC

[Panda info and help](#)

## Panda Production Operations Dashboard

Panda shift [calendar](#) [mailing list](#)  
 ADCoS [twiki](#) [elog](#) [calendar](#) [mailing list](#)  
 Production task support [mailing list](#)

[Click for help](#)

**Jobs - [search](#)**

States: [running](#), [defined](#), [waiting](#), [assigned](#), [activated](#), [finished](#), [failed](#)  
 Types: [analysis](#), [prod](#), [install](#), [test](#)

**Quick search**

Job   
 Dataset   
 Task request   
 Task status   
 File

**Summaries**

Blocks:  days  
 Errors:  days  
 Nodes:  days  
 Usage [1](#) [3](#) days

**Tasks - [search](#)**

[Generic Task Req](#)  
[EvGen Task Req](#)  
[CTBsim Task Req](#)  
[Task list](#)  
[New Tag](#)  
[Bug Report](#)  
[Task overview query](#)

**Datasets - [search](#)**

[Popular datasets](#)  
[Aborted datasets](#)  
[Datasets Browser](#)

**Datasets Distribution**

[Data Transfer Request](#)  
[DaTRI: User Requests](#)  
[AODs](#)  
[EVNTs](#)  
[Conditions DS](#)  
[DB Releases](#)  
[SIT pacballs](#)  
[Validation Samples](#)  
[Functional Tests](#)

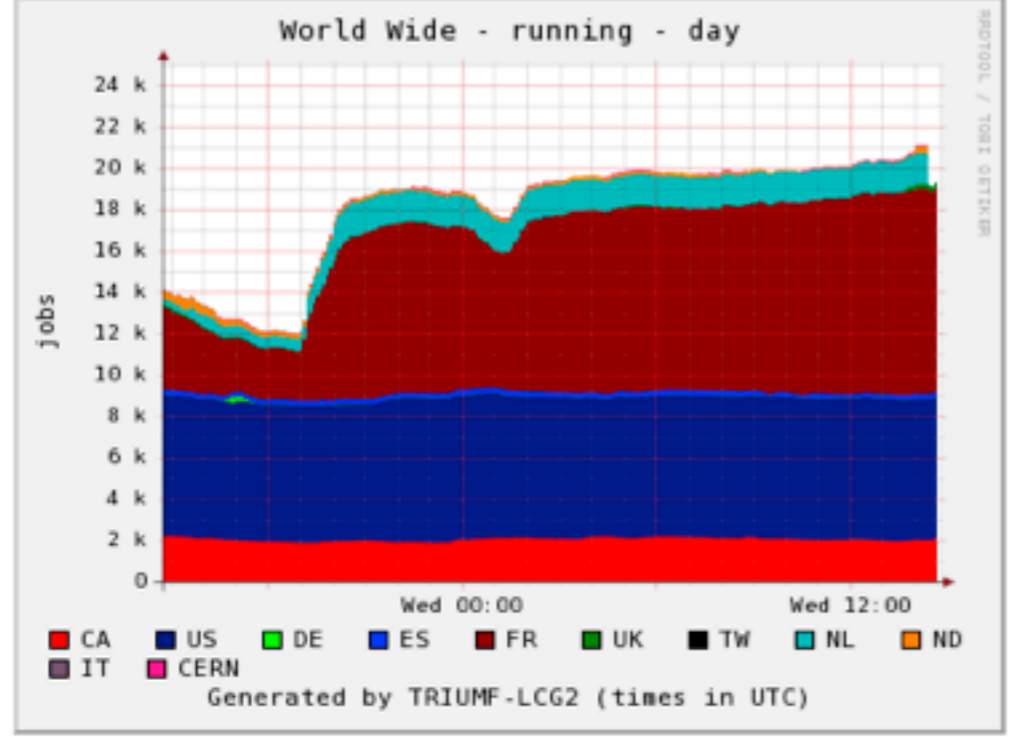
**Servers:** CERN:OK Logger:OK

[Show space available at sites](#)

**Active tasks:** CA:5 CERN:1 DE:4 ES:4 FR:13 IT:2 ND:3 NL:9 TW:1 UK:2 US:23  
 Bamboo [task brokerage](#), [job submissions](#), [status](#) over last 12 hours

Jobs updated >12 hrs ago: **activated: 8257** running: none  
 Jobs updated >36 hrs ago: **transferring: 698**

**Ganglia World Wide Summary** More graphs at the [Panda graph generator](#)



[Cloud efficiency history](#)

**Production job summary, last 12 hours** (Details: [errors](#), [nodes](#))

Cloud Information	Job Nodes	Jobs	Latest	Pilot Nodes	defined	assigned	waiting	activated	sent	running	holding	transferring	finished	failed	tot	trf	other
<b>Overall Production</b>	5613	1174	06-09 14:30	<a href="#">10406</a>	0 / 0	<a href="#">1623</a> / 0	0	<a href="#">37846</a> / 0	7 / 0	<a href="#">20999</a> / 0	<a href="#">557</a> / 0	<a href="#">11179</a> / <a href="#">698</a>	<a href="#">34280</a> / 0	<a href="#">1174</a> / 0	3%	0%	3%
<b>CA</b>	678	62	06-09 14:30	<a href="#">870</a>	0	0	0	<a href="#">3922</a>	1	<a href="#">1997</a>	<a href="#">58</a>	<a href="#">883</a> / 0	<a href="#">4890</a>	<a href="#">62</a>	1%	0%	1%



# No production!

Panda Production Operations

http://panda.cern.ch:25980/server/pandamon/query?dash=prod

Site	Jobs	Latest	Pilot Nodes	defined	assigned	waiting	activated	sent	running	holding	transferring	finished	failed	tot	trf	other	
<a href="#">OSG</a>	0	0	353	0	0	0	0	0	0	0	0/0	0	0				
<a href="#">TW</a>	61	66	06-09 14:14	109	0	0	0	0	2	0	0/0	14	66	82%	0%	82%	
<a href="#">UK</a>	68	141	06-09 14:30	1117	0	0	0	0	201	4	0/0	43	141	77%	1%	76%	
<a href="#">US</a>	1753	113	06-09 14:30	2381	0	596	0	13592	0	6835	149	4403/0	12235	113	1%	0%	1%

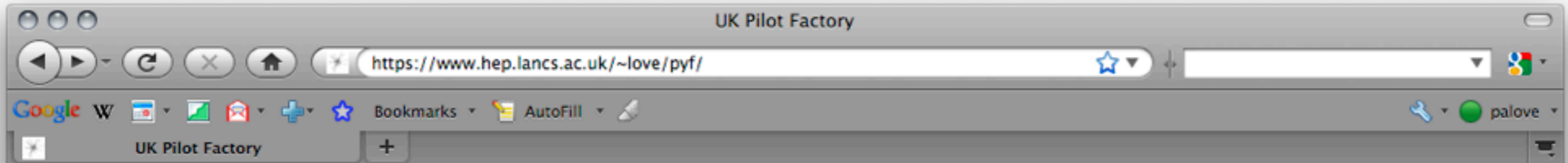
  

UK Sites	Job Nodes	Jobs	Latest	Pilot Nodes	defined	assigned	waiting	activated	sent	running	holding	transferring	finished	failed	tot	trf	other
Site Name	68	141	06-09 14:30	1117	0	0	0	0	0	201	4	0/0	43	141	77%	1%	76%
<a href="#">RAL-LCG2</a>	45	140	06-09 14:21	105	0	0	0	0	0	197	0	0/0	27	140	84%	1%	83%
<a href="#">UKI-LT2-Brunel</a>	3	0	06-09 14:08	37	0	0	0	0	0	1	0	0/0	2	0	0%	0%	0%
<a href="#">UKI-LT2-IC-HEP</a>	1	1	06-09 04:48	64	0	0	0	0	0	0	0	0/0	0	1	100%	0%	100%
<a href="#">UKI-LT2-QMUL</a>	3	0	06-09 14:08	84	0	0	0	0	0	1	0	0/0	2	0	0%	0%	0%
<a href="#">UKI-LT2-RHUL</a>	0	0		40	0	0	0	0	0	0	0	0/0	0	0			
<a href="#">UKI-LT2-UCL-HEP</a>	2	0	06-09 14:30	15	0	0	0	0	0	0	1	0/0	1	0	0%	0%	0%
<a href="#">UKI-NORTHGRID-LANCS-HEP</a>	3	0	06-09 14:07	60	0	0	0	0	0	1	0	0/0	2	0	0%	0%	0%
<a href="#">UKI-NORTHGRID-LIV-HEP</a>	0	0		34	0	0	0	0	0	0	0	0/0	0	0			
<a href="#">UKI-NORTHGRID-MAN-HEP</a>	0	0		156	0	0	0	0	0	0	0	0/0	0	0			
<a href="#">UKI-NORTHGRID-SHEF-HEP</a>	0	0		53	0	0	0	0	0	0	0	0/0	0	0			
<a href="#">UKI-SCOTGRID-DURHAM</a>	3	0	06-09 14:30	60	0	0	0	0	0	0	1	0/0	2	0	0%	0%	0%
<a href="#">UKI-SCOTGRID-ECDF</a>	4	0	06-09 14:28	46	0	0	0	0	0	0	1	0/0	3	0	0%	0%	0%
<a href="#">UKI-SCOTGRID-GLASGOW</a>	0	0		140	0	0	0	0	0	0	0	0/0	0	0			
<a href="#">UKI-SOUTHGRID-BHAM-HEP</a>	0	0		38	0	0	0	0	0	0	0	0/0	0	0			
<a href="#">UKI-SOUTHGRID-CAM-HEP</a>	1	0	06-09 14:08	24	0	0	0	0	0	1	0	0/0	2	0	0%	0%	0%
<a href="#">UKI-SOUTHGRID-OX-HEP</a>	0	0		44	0	0	0	0	0	0	0	0/0	0	0			
<a href="#">UKI-SOUTHGRID-RALPP</a>	3	0	06-09 14:30	117	0	0	0	0	0	0	1	0/0	2	0	0%	0%	0%

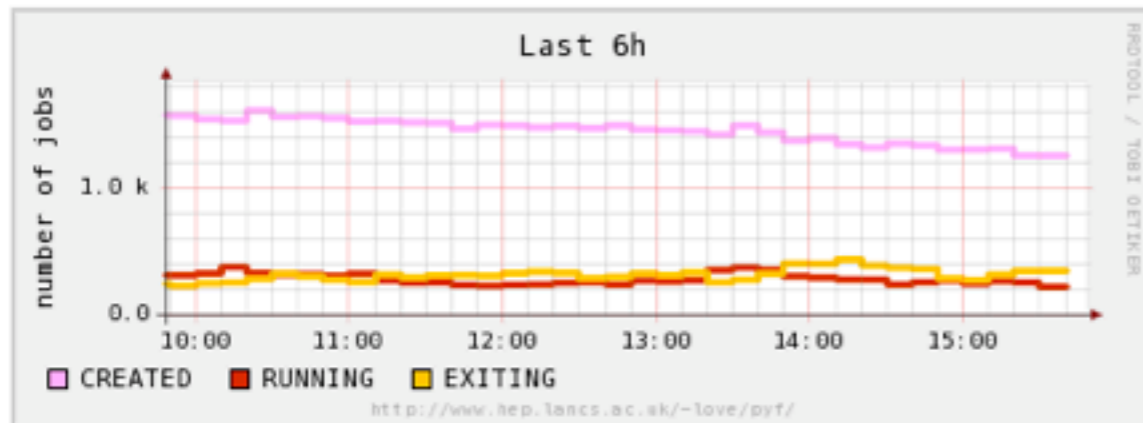
**Production blocks active in last 12 hours** ([details here](#))

<a href="#">data10_7TeV.00152220.physics_L1Calo.merge.NTUP_EGAMMA_r1297_p161_p179_tid145901_00</a>	3 jobs	Atlas-15.6.10.2	From 2010-06-09 To 2010-06-09
<a href="#">finished:1 failed:2</a>			
<a href="#">data10_7TeV.00152220.physics_MinBias.merge.NTUP_EGAMMA_r1297_p161_p179_tid145932_00</a>	3 jobs	Atlas-15.6.10.2	From 2010-06-09 To 2010-06-09
<a href="#">finished:1 failed:2</a>			
<a href="#">data10_7TeV.00152221.physics_L1Calo.merge.NTUP_EGAMMA_r1297_p161_p179_tid145902_00</a>	12 jobs	Atlas-15.6.10.2	From 2010-06-09 To 2010-06-09
<a href="#">finished:4 failed:8</a>			
<a href="#">data10_7TeV.00152409.physics_L1Calo.merge.NTUP_EGAMMA_r1297_p161_p179_tid145904_00</a>	38 jobs	Atlas-15.6.10.2	From 2010-06-09 To 2010-06-09

# Pilot factory monitoring



[Home](#)



<https://www.hep.lancs.ac.uk/~love/pyf/>

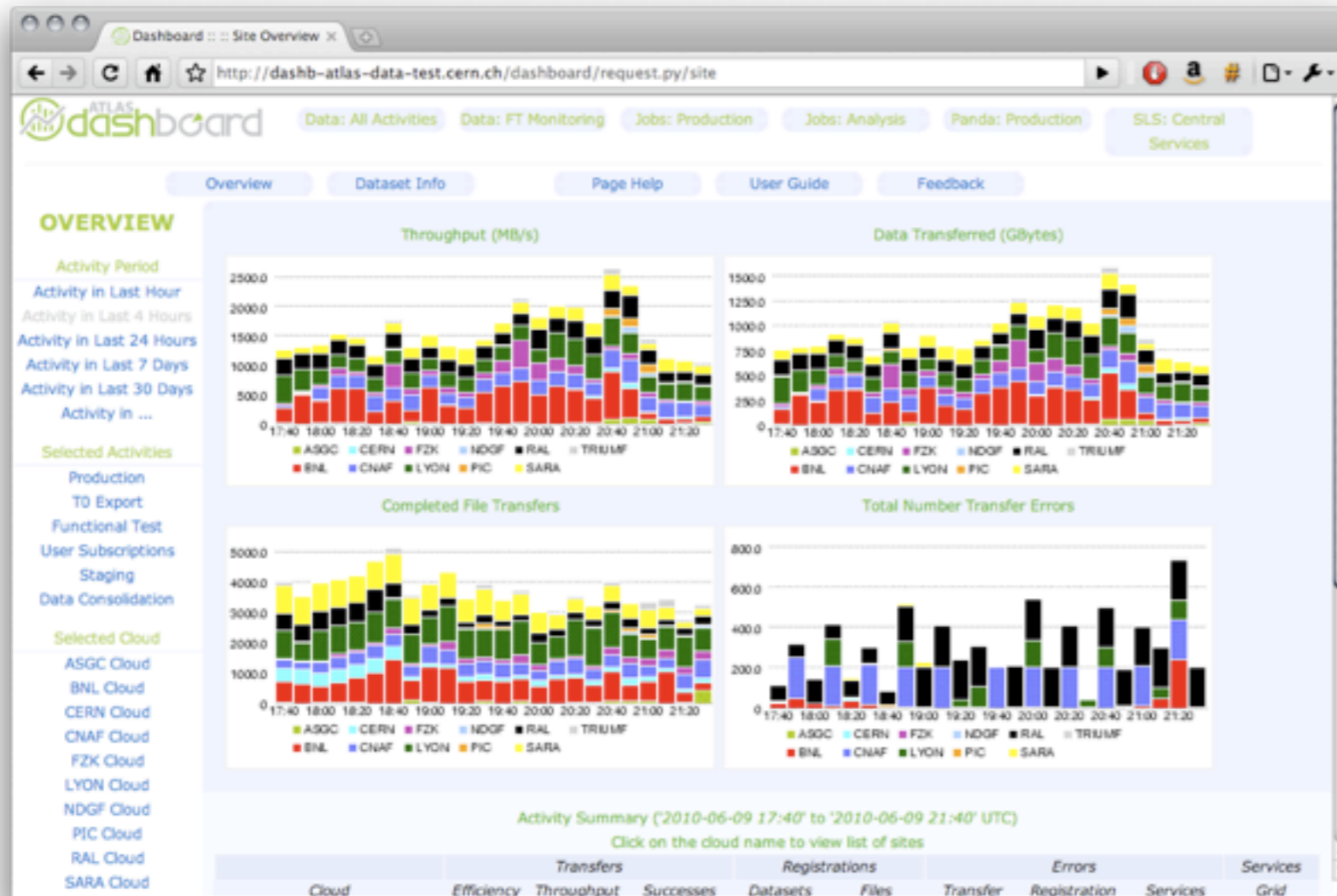
developed to include all factories

[More graphs](#)

Job count per STATE:

Panda Queue	Queue (click for graphs)	created	running	exiting
ANALY_AUSTRALIA	<a href="http://agh2.atlas.unimelb.edu.au/jobmanager-lcgpbs-atlas">agh2.atlas.unimelb.edu.au/jobmanager-lcgpbs-atlas</a>	370	0	14
ANALY_BHAM	<a href="http://epgr04.ph.bham.ac.uk:2119/jobmanager-lcgpbs-glong">epgr04.ph.bham.ac.uk:2119/jobmanager-lcgpbs-glong</a>	102	0	21
ANALY_BHAM	<a href="http://epgr02.ph.bham.ac.uk:2119/jobmanager-lcgpbs-long">epgr02.ph.bham.ac.uk:2119/jobmanager-lcgpbs-long</a>	10	9	13
ANALY_CAM	<a href="http://serv07.hep.phy.cam.ac.uk/jobmanager-lcgcondor-atlas">serv07.hep.phy.cam.ac.uk/jobmanager-lcgcondor-atlas</a>	42	8	17
ANALY_ECDF	<a href="http://mw05.ecdf.ed.ac.uk:2119/jobmanager-lcgsge-ecdf">mw05.ecdf.ed.ac.uk:2119/jobmanager-lcgsge-ecdf</a>	4	2	7
ANALY_GLASGOW	<a href="http://svr026.gla.scotgrid.ac.uk:2119/jobmanager-lcgpbs-atlanaly">svr026.gla.scotgrid.ac.uk:2119/jobmanager-lcgpbs-atlanaly</a>	118	53	6
ANALY_GLASGOW	<a href="http://svr021.gla.scotgrid.ac.uk:2119/jobmanager-lcgpbs-atlanaly">svr021.gla.scotgrid.ac.uk:2119/jobmanager-lcgpbs-atlanaly</a>	25	56	21
ANALY_LANCS	<a href="http://fal-pygrid-44.lancs.ac.uk:2119/jobmanager-lcgpbs-q">fal-pygrid-44.lancs.ac.uk:2119/jobmanager-lcgpbs-q</a>	336	28	0
ANALY_LIV	<a href="http://hepgrid5.ph.liv.ac.uk:2119/jobmanager-lcgpbs-long">hepgrid5.ph.liv.ac.uk:2119/jobmanager-lcgpbs-long</a>	0	8	52
ANALY_MANC	<a href="http://ce01.tier2.hep.manchester.ac.uk/jobmanager-lcgpbs-long">ce01.tier2.hep.manchester.ac.uk/jobmanager-lcgpbs-long</a>	116	1	25
ANALY_MANC	<a href="http://ce02.tier2.hep.manchester.ac.uk/jobmanager-lcgpbs-long">ce02.tier2.hep.manchester.ac.uk/jobmanager-lcgpbs-long</a>	87	1	22
ANALY_NIKHEF-ELPROD	<a href="http://gazon.nikhef.nl:2119/jobmanager-pbs-medium">gazon.nikhef.nl:2119/jobmanager-pbs-medium</a>	0	8	7
ANALY_NIKHEF-ELPROD	<a href="http://trekker.nikhef.nl:2119/jobmanager-pbs-medium">trekker.nikhef.nl:2119/jobmanager-pbs-medium</a>	0	11	10

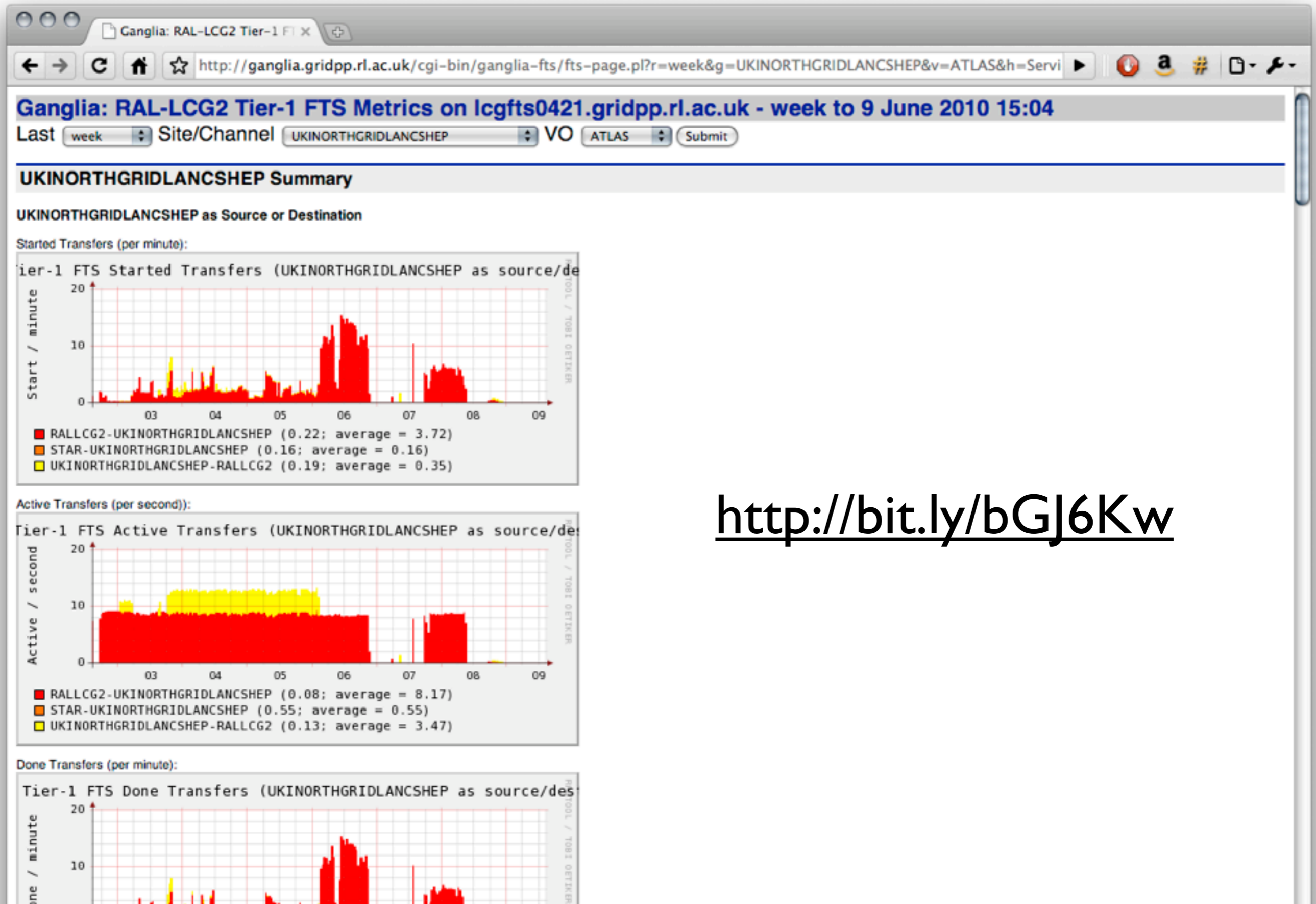
# Dataflow



<http://dashb-atlas-data-test.cern.ch/dashboard/request.py/site>

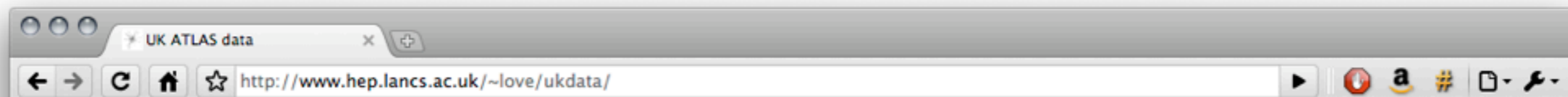


# FTS monitoring at RAL



<http://bit.ly/bGJ6Kw>

# ATLAS UK disk summary



## Tier-2 site view

Site (click for detail)	WLCG 2010		GridPP (includes LOCALGROUPDISK)				Usage
	Pledge(TB)	Actual (TB)	Pledge (TB)	Actual (TB)	Not-free (TB)	Free (TB)	
<a href="#">UKI-LT2-Brunel</a>	0	4	0	4	1	3	
<a href="#">UKI-LT2-IC-HEP</a>	0	18	0	18	3	15	
<a href="#">UKI-LT2-QMUL</a>	582	190	727	231	147	84	
<a href="#">UKI-LT2-RHUL</a>	123	178	154	222	62	160	
<a href="#">UKI-LT2-UCL-HEP</a>	8	33	10	42	5	37	
<a href="#">UKI-NORTHGRID-LANCS-HEP</a>	313	307	391	327	181	146	
<a href="#">UKI-NORTHGRID-LIV-HEP</a>	337	163	421	191	64	128	
<a href="#">UKI-NORTHGRID-MAN-HEP</a>	122	70	153	87	41	46	
<a href="#">UKI-NORTHGRID-SHEF-HEP</a>	154	117	192	125	89	36	
<a href="#">UKI-SCOTGRID-DURHAM</a>	9	11	11	11	2	9	
<a href="#">UKI-SCOTGRID-ECDF</a>	41	14	51	111	1	110	
<a href="#">UKI-SCOTGRID-GLASGOW</a>	805	355	1006	399	188	211	
<a href="#">UKI-SOUTHGRID-BHAM-HEP</a>	7	74	9	101	23	77	
<a href="#">UKI-SOUTHGRID-CAM-HEP</a>	77	66	96	82	14	68	
<a href="#">UKI-SOUTHGRID-OX-HEP</a>	148	117	185	139	59	80	
<a href="#">UKI-SOUTHGRID-RALPP</a>	62	171	78	201	61	140	
Tier-2 total	2787	1888	3484	2290	940	1349	

Actual>Pledge Actual<Pledge

## Tier-2 token view (Tier-1 [here](#) )

1. [ATLASDATADISK](#)
2. [ATLASGROUPDISK](#)
3. [ATLASHOTDISK](#)
4. [ATLASLOCALGROUPDISK](#)
5. [ATLASMCDISK](#)
6. [ATLASPRODDISK](#)
7. [ATLASSCRATCHDISK](#)

See also:

<http://bourricot.cern.ch/dq2/>

<http://www2.ph.ed.ac.uk/~wbhimji/SRMMonitoring/>

# Monitor these blacklists

CLOUD	SITE	ENDPOINT	STATUS
FRANCESITES	GRIF-SACLAY	GRIF-SACLAY_LOCALGROUPDISK	manual: https://savann... 113614
	RD-02-NIPNE	RD-02-NIPNE_DATADISK	manual: https://savann... 113614
		RD-02-NIPNE_HOTDISK	manual: https://savann... 113614
		RD-02-NIPNE_MCDISK	manual: https://savann... 113614
		RD-02-NIPNE_PROD00DISK	manual: https://savann... 113614
		RD-02-NIPNE_SCRATCHDISK	manual: https://savann... 113614
		RD-02-NIPNE_SOFT-TEST	manual: https://savann... 113614
NDGF	SE-SNIC-T2	SE-SNIC-T2_DATADISK	manual: https://savann...
		SE-SNIC-T2_MCDISK	manual: https://savann...
		SE-SNIC-T2_PROD00DISK	manual: https://savann...
		SE-SNIC-T2_SCRATCHDISK	manual: https://savann...
		SE-SNIC-T2_SOFT-TEST	manual: https://savann...
IL-TAU-HEP	SE-SNIC-T2_STHLM	manual: https://savann...	
	RU-MOSCOW-MEPHI-LCG2_DATADISK	manual: https://savann... 113614	

[http://atlddm02.cern.ch/blacklisted\\_production.html](http://atlddm02.cern.ch/blacklisted_production.html)

<http://gangarobot.cern.ch/blacklist.html>

```
Spacetokens currently blacklisted by the GangaRobot for glite WMS (LCG backend):  
  
CYFRONET-LCG2_DATADISK  
CYFRONET-LCG2_BOTDISK  
CYFRONET-LCG2_LOCALGROUPDISK  
CYFRONET-LCG2_MCDISK  
CYFRONET-LCG2_PHYS-HI  
CYFRONET-LCG2_PROD00DISK  
CYFRONET-LCG2_SCRATCHDISK  
INFN-01_DATADISK  
INFN-01_DATATAPE  
INFN-01_BOTDISK  
INFN-01_MCDISK  
INFN-01_MCTAPE  
INFN-01_SCRATCHDISK  
INFN-01_SOFT-TEST  
RU-PROTVINO-IIEP_DATADISK  
RU-PROTVINO-IIEP_BOTDISK  
RU-PROTVINO-IIEP_LOCALGROUPDISK  
RU-PROTVINO-IIEP_MCDISK  
RU-PROTVINO-IIEP_PERF-JETS  
RU-PROTVINO-IIEP_PROD00DISK  
RU-PROTVINO-IIEP_SCRATCHDISK  
TAINWM-LCG2_DATADISK  
TAINWM-LCG2_DATATAPE  
TAINWM-LCG2_BOTDISK  
TAINWM-LCG2_MCDISK  
TAINWM-LCG2_MCTAPE  
TAINWM-LCG2_PHYS-SK  
TAINWM-LCG2_SCRATCHDISK  
UKI-L72-QMUG_DATADISK  
UKI-L72-QMUG_BOTDISK  
UKI-L72-QMUG_LOCALGROUPDISK  
UKI-L72-QMUG_MCDISK  
UKI-L72-QMUG_PERF-JETS  
UKI-L72-QMUG_PHYS-TOP  
UKI-L72-QMUG_PROD00DISK  
UKI-L72-QMUG_SCRATCHDISK  
UKI-L72-KHUS_DATADISK  
UKI-L72-KHUS_BOTDISK  
UKI-L72-KHUS_LOCALGROUPDISK  
UKI-L72-KHUS_MCDISK
```



# Developments

Site Name	SRM SAN 12	SRM SAN 240	SRM SAN 480	Ganga Robot 12	Ganga Robot 240	Ganga Robot 480	OCDE 12h	OCDE 24h	OCDE 48h	OCDE total	OC expansion	RT exclusion	...
AGL2	200	200	200	200	200	200	200	200	200	200	200	200	...
Australia-ATLAS	200	200	200	200	200	200	200	200	200	200	200	200	...
BEIJING-CCG1	200	200	200	200	200	200	200	200	200	200	200	200	...
BNL-ATLAS	200	200	200	200	200	200	200	200	200	200	200	200	...
BNL-ATLAS-TeV2	200	200	200	200	200	200	200	200	200	200	200	200	...
CA-ALBERTA-TECHUS12-12	200	200	200	200	200	200	200	200	200	200	200	200	...
CA-SCINEX-12	200	200	200	200	200	200	200	200	200	200	200	200	...
CERN-PROD	200	200	200	200	200	200	200	200	200	200	200	200	...
OCDE-CCG1	200	200	200	200	200	200	200	200	200	200	200	200	...
CYRONEX-CCG2	200	200	200	200	200	200	200	200	200	200	200	200	...
OCDE-12h	200	200	200	200	200	200	200	200	200	200	200	200	...

<http://dashb-atlas-ssb.cern.ch/dashboard/request.py/siteview?view=Exclusion>

<http://hammercloud.cern.ch/atlas>

**Hammercloud | ATLAS**

Home | Cloudb | Tools | Last Tools | HC Stats | Ganga Robot | Administration

<< Back

**Ganga Robot**

All - Panda - LCG - Nordugrid

**Panda**

- CA\_PANDA: ANALY\_ALBERTA, ANALY\_SFU, ANALY\_TORONTO, ANALY\_TREJUM, ANALY\_VICTORIA, ANALY\_AUSTRALIA, ANALY\_SFU\_BUGABOO
- DE\_PANDA: ANALY\_CIT, ANALY\_FREIBURG, ANALY\_FZK, ANALY\_LAZ, ANALY\_PASC, ANALY\_CDCS, ANALY\_DESY\_HH, ANALY\_OGGERO, ANALY\_HERRINGWELL, ANALY\_HUBBARDSTON, ANALY\_DESY\_ZH, ANALY\_HVMU, ANALY\_UNI\_DORTMUND, ANALY\_FZJ
- ES\_PANDA: ANALY\_EPC, ANALY\_PIC, ANALY\_IPAC, ANALY\_UAM, ANALY\_LIP-DIBBIT, ANALY\_LIP-CORRISA, ANALY\_NCD-INGRID-PT
- FR\_PANDA: ANALY\_BEIJING, ANALY\_CERN, ANALY\_ORP-SPC, ANALY\_ORP-UL, ANALY\_ORP-UPHE, ANALY\_LAPP, ANALY\_LPC, ANALY\_USPC, ANALY\_LYON, ANALY\_ROMANUAT, ANALY\_TOKYO-RTD, ANALY\_TOKYO, ANALY\_ROMANIAS, ANALY\_LYON-DOACHE
- IT\_PANDA: ANALY\_3VFN-NAPOLI, ANALY\_3VFN-MILANO, ANALY\_3VFN-ROMA1, ANALY\_3VFN-FRASCATI, ANALY\_CNAF, ANALY\_3VFN-IRLAND-ATLAS
- NO\_PANDA: ANALY\_ARC
- NL\_PANDA: ANALY\_ITEP, ANALY\_ZWR, ANALY\_HEP, ANALY\_SARA, ANALY\_TR-13-ULAKBIM, ANALY\_PNNL, ANALY\_NKHIF-EURNO, ANALY\_WELZMANN, ANALY\_ARC-KI, ANALY\_CSTCDR, ANALY\_S-TAU-HEP, ANALY-TECHNOV-HEP
- TO\_PANDA: ANALY\_CERN, ANALY-CERN-KROON
- TW\_PANDA: ANALY\_TAIWAN, ANALY\_TW-FTI
- UK\_PANDA: ANALY\_GLASGOW, ANALY\_LANCS, ANALY\_OPL, ANALY\_RHUL, ANALY\_BHAM, ANALY\_CAM, ANALY\_MANC, ANALY\_VICENT, ANALY\_OK, ANALY\_BALFP, ANALY\_SHEP, ANALY\_MANC2, ANALY\_LIV, ANALY\_MANC, ANALY-EDD, ANALY\_UCL

# Engaging with ATLAS

- UK ATLAS Operations weekly on Thursday at 1000hrs
- Phone CERN +41227677000 and ask for meeting with McCubbin
- Or the fortnightly UKI sites meeting
- [tbsupport@jabber.conference.org](mailto:tbsupport@jabber.conference.org)
- ATLAS distributed computing shifts
- [atlas-uk-comp-operations@cern.ch](mailto:atlas-uk-comp-operations@cern.ch)

# Common answers

## Jobs

- My site is idle, what's wrong?  
Probably nothing, but...
- Send more pilots!  
Sure, but check factory monitor
- Stop sending so many pilots!  
Sure, but check factory monitor
- How can I install/remove an Athena release?  
Talk to UK ops
- How does my site performance compare to others?  
Hammercloud will tell you, help is available to analyze

## Data

- My storage is getting full, can Atlas please cleanup?  
Sure, talk to UK ops but no reason to worry about this
- My storage is empty, is something wrong with it?  
Talk to UK ops, we can tweak site shares



**extra**

**GGUS Ticket-ID: 58707****Information Ticket-ID: 58707**

Submitter: <b>Wensheng Deng 90806</b>	Date of problem: 2010-06-01 18:17 UTC	Origin support group: GGUS
Login (shortened): CN=Wensheng Deng 90806	Type of problem: <b>Other</b>	Ticket Category: Incident
E-Mail: wdeng@bnl.gov	Priority: <b>urgent</b>	Responsible Unit: ROC_UK/Ireland
User notification: on every change	VO specific: No	Assigned to: lcg_manager@physics.ox.ac.uk;p.gronbech1@physics.ox.ac.uk
	Concerned VO: atlas	Ticket Type: <b>TEAM</b>
	Notified Site: UKI-SOUTHGRID-OX-HEP	Routing Type: SITE/ROC
	MouArea: Other Services	Status: <b>verified</b>

**Description:** ANALY\_OX CMT setup failed

Detailed description:

▶[http://voatlas19.cern.ch:25980/monitor/logs/21c69c50-f451-4ebc-b0cf-f4375e43b32e/tarball\\_PandaJob\\_1076629463\\_ANALY\\_OX/pilotlog.txt](http://voatlas19.cern.ch:25980/monitor/logs/21c69c50-f451-4ebc-b0cf-f4375e43b32e/tarball_PandaJob_1076629463_ANALY_OX/pilotlog.txt)

```
01 Jun 16:17:11|runJob.py | Executing job command 1/1: source /software/atlas/software/15.6.9/setup.sh;export CMTCONFIG=i686-slc5-gcc43-opt;source
/software/atlas/software/15.6.9/cmsite/setup.sh -tag=AtlasProduction,15.6.9.8,setup,runtime,forceConfig;export CMTPATH=$SITEROOT/AtlasProduction/15.6.9.8;export
AtlasVersion=15.6.9.8;export AtlasProject=AtlasProduction;./runAthena-00-00-11 -r PhysicsAnalysis/AnalysisCommon/UserAnalysis/run/ -j "%20maker_combined_maker_d3pd.py" --dbrFile
DBRelease-10.7.1.tar.gz -i "[AOD.140130._000049.pool.root.1', 'AOD.140130._000050.pool.root.1']" -m "[ ]" -n "[ ]" -o "{\THIST: [(\MakerStreamOut',
'user.KirillSkovpen.MakerD3PDemx_AntiKt4H1TopoJets_mc09_7TeV.105985.WW_Herwig_010610_01.MakerStreamOut_00009.root'), (\GLOBAL',
'user.KirillSkovpen.MakerD3PDemx_AntiKt4H1TopoJets_mc09_7TeV.105985.WW_Herwig_010610_01.GLOBAL_00009.root')]" -a jobO.f5537389-265f-4055-b543-9030cf05f767.tar.gz --
corCheck --sourceURL ▶https://voatlas57.cern.ch:25443 --lfcHost lfc-atlas.gridpp.rl.ac.uk --inputGUIDs "[D2F033EE-3A63-DF11-BCA9-0019B9F3F6A8', 'AA18B361-3963-DF11-BE67-
0019B9F405CE]" --oldPrefix "srm://t2se01.physics.ox.ac.uk" --newPrefix rfio:// 1>athena_stdout.txt 2>athena_stderr.txt
01 Jun 16:17:20|runJob.py | Job command 1/1 failed: res = (35584, "Using default options -tag=15.6.9,AtlasOffline,opt,gcc43,slc5,32,runtime\n/software/atlas/prod/releases/rel_15-
21/CMT/v1r21/mgr/setup.sh: line 46: sed: command not found\n/software/atlas/prod/releases/rel_15-21/AtlasProduction/15.6.9.8/AtlasProductionRunTime/cmt/setup.sh: line 10: 15959
Segmentation fault $(CMTROOT)/mgr/cmt setup -sh -pack=AtlasProductionRunTime -version=AtlasProductionRunTime-00-00-03 -path=/software/atlas/prod/releases/rel_15-
21/AtlasProduction/15.6.9.8 -no_cleanup $* > $(tempfile)\n/software/atlas/prod/releases/rel_15-21/CMT/v1r21/mgr/cmt setup -sh -pack=AtlasProductionRunTime -
version=AtlasProductionRunTime-00-00-03 -path=/software/atlas/prod/releases/rel_15-21/AtlasProduction/15.6.9.8 -no_cleanup -tag=i686-slc5-gcc43-opt,ATLAS
>/tmp/cmt.14831\n/software/atlas/prod/releases/rel_15-21/AtlasProduction/15.6.9.8/AtlasProductionRunTime/cmt/setup.sh: line 16: 15960 Segmentation fault /bin/rm -f
$(tempfile)\n/software/atlas/prod/releases/rel_15-21/cmsite/setup.sh: line 22: 15961 Segmentation fault /bin/rm -f $(tempfile)\nsh: line 1: 15962 Segmentation fault ./runAthena-00-00-11 -r
PhysicsAnalysis/AnalysisCommon/UserAnalysis/run/ -j "%20maker_combined_maker_d3pd.py" --dbrFile DBRelease-10.7.1.tar.gz -i "[AOD.140130._000049.pool.root.1',
\AOD.140130._000050.pool.root.1']" -m "[ ]" -n "[ ]" -o "{\THIST: [(\MakerStreamOut',
\user.KirillSkovpen.MakerD3PDemx_AntiKt4H1TopoJets_mc09_7TeV.105985.WW_Herwig_010610_01.MakerStreamOut_00009.root'), (\GLOBAL',
\user.KirillSkovpen.MakerD3PDemx_AntiKt4H1TopoJets_mc09_7TeV.105985.WW_Herwig_010610_01.GLOBAL_00009.root')]" -a jobO.f5537389-265f-4055-b543-9030cf05f767.tar.gz --
corCheck --sourceURL ▶https://voatlas57.cern.ch:25443 --lfcHost lfc-atlas.gridpp.rl.ac.uk --inputGUIDs "[D2F033EE-3A63-DF11-BCA9-0019B9F3F6A8', 'AA18B361-3963-DF11-BE67-
0019B9F405CE]" --oldPrefix "srm://t2se01.physics.ox.ac.uk" --newPrefix rfio:// > athena_stdout.txt 2> athena_stderr.txt")
```

Regards,  
Wensheng



**Description:** ANALY\_OX CMT setup failed

**Detailed description:**

▶[http://voatlas19.cern.ch:25980/monitor/logs/21c69c50-f451-4ebc-b0cf-f4375e43b32e/tarball\\_PandaJob\\_1076629463\\_ANALY\\_OX/pilotlog.txt](http://voatlas19.cern.ch:25980/monitor/logs/21c69c50-f451-4ebc-b0cf-f4375e43b32e/tarball_PandaJob_1076629463_ANALY_OX/pilotlog.txt)

```
01 Jun 16:17:11|runJob.py | Executing job command 1/1: source /software/atlas/software/15.6.9/setup.sh;export CMTCONFIG=i686-slc5-gcc43-opt;source
/software/atlas/software/15.6.9/cmtsite/setup.sh -tag=AtlasProduction,15.6.9.8,setup,runtime,forceConfig;export CMTPATH=$SITEROOT/AtlasProduction/15.6.9.8;export
AtlasVersion=15.6.9.8;export AtlasProject=AtlasProduction;./runAthena-00-00-11 -r PhysicsAnalysis/AnalysisCommon/UserAnalysis/run/ -j "%20maker_combined_maker_d3pd.py" --dbrFile
DBRelease-10.7.1.tar.gz -i "[AOD.140130._000049.pool.root.1', 'AOD.140130._000050.pool.root.1']" -m "[ ]" -n "[ ]" -o "{THIST: [('MakerStreamOut',
'user.KirillSkovpen.MakerD3PDemx_AntiKt4H1TopoJets_mc09_7TeV.105985.WW_Herwig_010610_01.MakerStreamOut._00009.root'), ('GLOBAL',
'user.KirillSkovpen.MakerD3PDemx_AntiKt4H1TopoJets_mc09_7TeV.105985.WW_Herwig_010610_01.GLOBAL._00009.root')]}"; -a jobO.f5537389-265f-4055-b543-9030cf05f767.tar.gz --
corCheck --sourceURL ▶https://voatlas57.cern.ch:25443 --lfcHost lfc-atlas.gridpp.rl.ac.uk --inputGUIDs "[D2F033EE-3A63-DF11-BCA9-0019B9F3F6A8', 'AA18B361-3963-DF11-BE67-
0019B9F405CE']" --oldPrefix "srm://t2se01.physics.ox.ac.uk" --newPrefix rfc:// 1>athena_stdout.txt 2>athena_stderr.txt
01 Jun 16:17:20|runJob.py | Job command 1/1 failed: res = (35584, "Using default options -tag=15.6.9,AtlasOffline,opt,gcc43,slc5,32,runtime\n/software/atlas/prod/releases/rel_15-
21/CMT/v1r21/mgr/setup.sh: line 46: sed: command not found\n/software/atlas/prod/releases/rel_15-21/AtlasProduction/15.6.9.8/AtlasProductionRunTime/cmt/setup.sh: line 10: 15959
Segmentation fault ${CMTROOT}/mgr/cmt setup -sh -pack=AtlasProductionRunTime -version=AtlasProductionRunTime-00-00-03 -path=/software/atlas/prod/releases/rel_15-
21/AtlasProduction/15.6.9.8 -no_cleanup $* > ${tempfile}\n/software/atlas/prod/releases/rel_15-21/CMT/v1r21/mgr/cmt setup -sh -pack=AtlasProductionRunTime -
version=AtlasProductionRunTime-00-00-03 -path=/software/atlas/prod/releases/rel_15-21/AtlasProduction/15.6.9.8 -no_cleanup -tag=i686-slc5-gcc43-opt,ATLAS
>/tmp/cmt.14831\n/software/atlas/prod/releases/rel_15-21/AtlasProduction/15.6.9.8/AtlasProductionRunTime/cmt/setup.sh: line 16: 15960 Segmentation fault /bin/rm -f
${tempfile}\n/software/atlas/prod/releases/rel_15-21/cmtsite/setup.sh: line 22: 15961 Segmentation fault /bin/rm -f ${tempfile}\nsh: line 1: 15962 Segmentation fault ./runAthena-00-00-11 -r
PhysicsAnalysis/AnalysisCommon/UserAnalysis/run/ -j "%20maker_combined_maker_d3pd.py" --dbrFile DBRelease-10.7.1.tar.gz -i "[AOD.140130._000049.pool.root.1',
'AOD.140130._000050.pool.root.1']" -m "[ ]" -n "[ ]" -o "{THIST: [('MakerStreamOut',
'user.KirillSkovpen.MakerD3PDemx_AntiKt4H1TopoJets_mc09_7TeV.105985.WW_Herwig_010610_01.MakerStreamOut._00009.root'), ('GLOBAL',
'user.KirillSkovpen.MakerD3PDemx_AntiKt4H1TopoJets_mc09_7TeV.105985.WW_Herwig_010610_01.GLOBAL._00009.root')]}"; -a jobO.f5537389-265f-4055-b543-9030cf05f767.tar.gz --
corCheck --sourceURL ▶https://voatlas57.cern.ch:25443 --lfcHost lfc-atlas.gridpp.rl.ac.uk --inputGUIDs "[D2F033EE-3A63-DF11-BCA9-0019B9F3F6A8', 'AA18B361-3963-DF11-BE67-
0019B9F405CE']" --oldPrefix "srm://t2se01.physics.ox.ac.uk" --newPrefix rfc:// > athena_stdout.txt 2> athena_stderr.txt)
```

Regards,  
Wensheng

**Solution:** Fine with me.

✓ This solution has been verified by the Team.

[Top] [History]

### History Ticket-ID: 58707

Last modifier	Date	Time (UTC)	Action taken/comments
Wensheng Deng 90806	2010-06-01	18:21	assigned (ROC_UK/Ireland) Changed notified site to: UKI-SOUTHGRID-OX-HEP Changed concerned VO to: atlas Sent TEAM notification mail to mail address lcg_manager@physics.ox.ac.uk
Ewan Mac Mahon	2010-06-01	18:44	Public Diary: You have to be joking.  I'm considering this a VO issue until someone explains why it's not.
Ewan Mac Mahon	2010-06-01	18:44	waiting for reply (ROC_UK/Ireland)