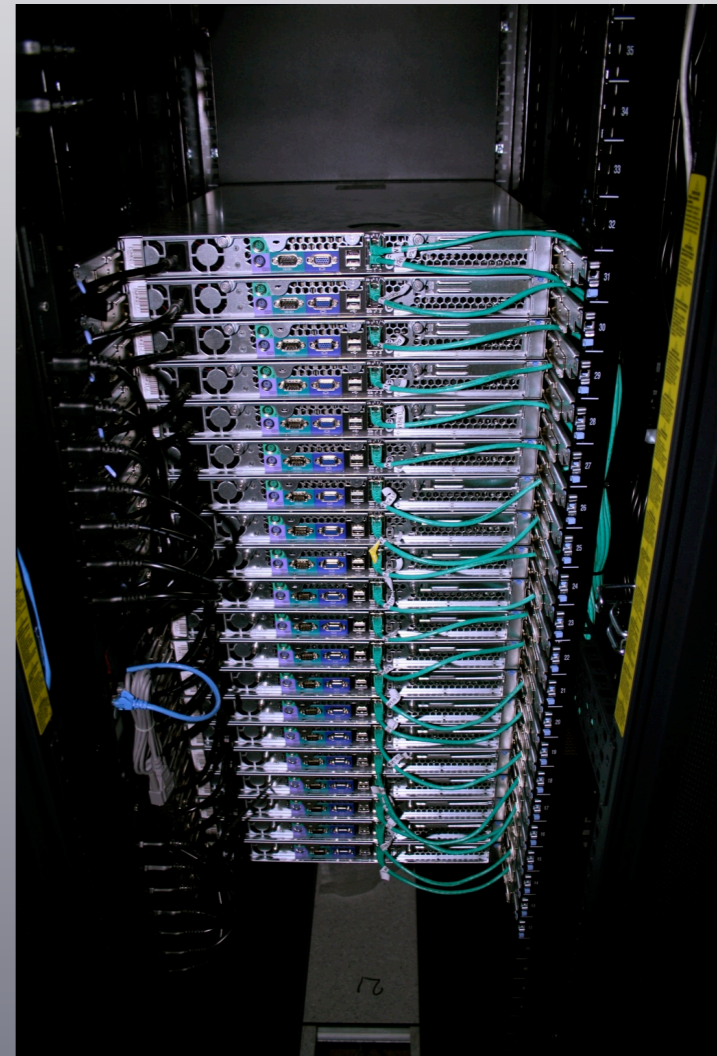


Manchester Tier 2 Centre

Site Update 2007-05-22

The Nodes

- 2x2.8Ghz Xeons
- 2x250GB hdd
- 4GB ram
- 2x 1 GigE



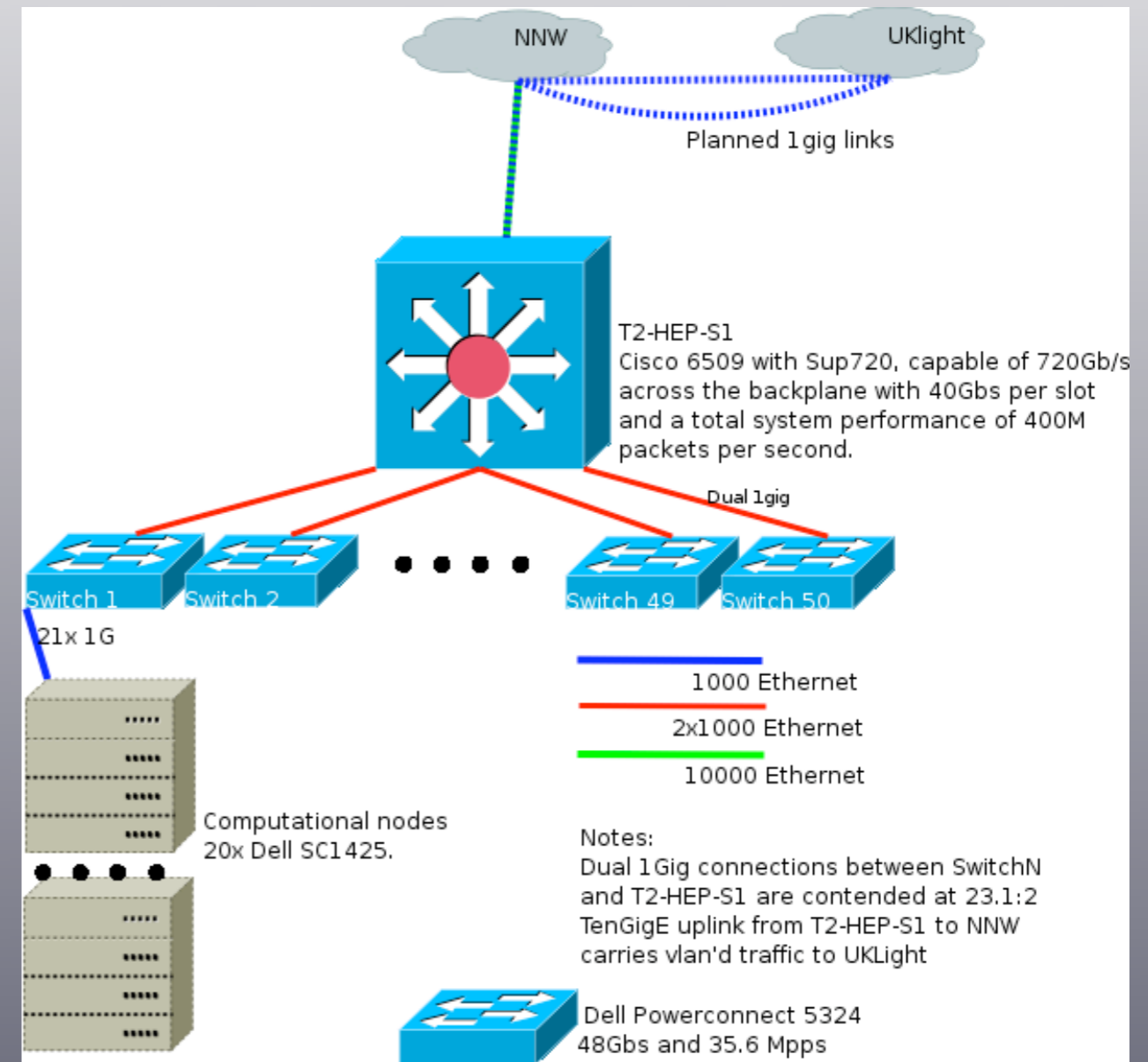
The Farm

- 900 Nodes
- 1800 x2.8Ghz LV Xeons
- ~1/2 Petabyte storage
- 3.6TB RAM



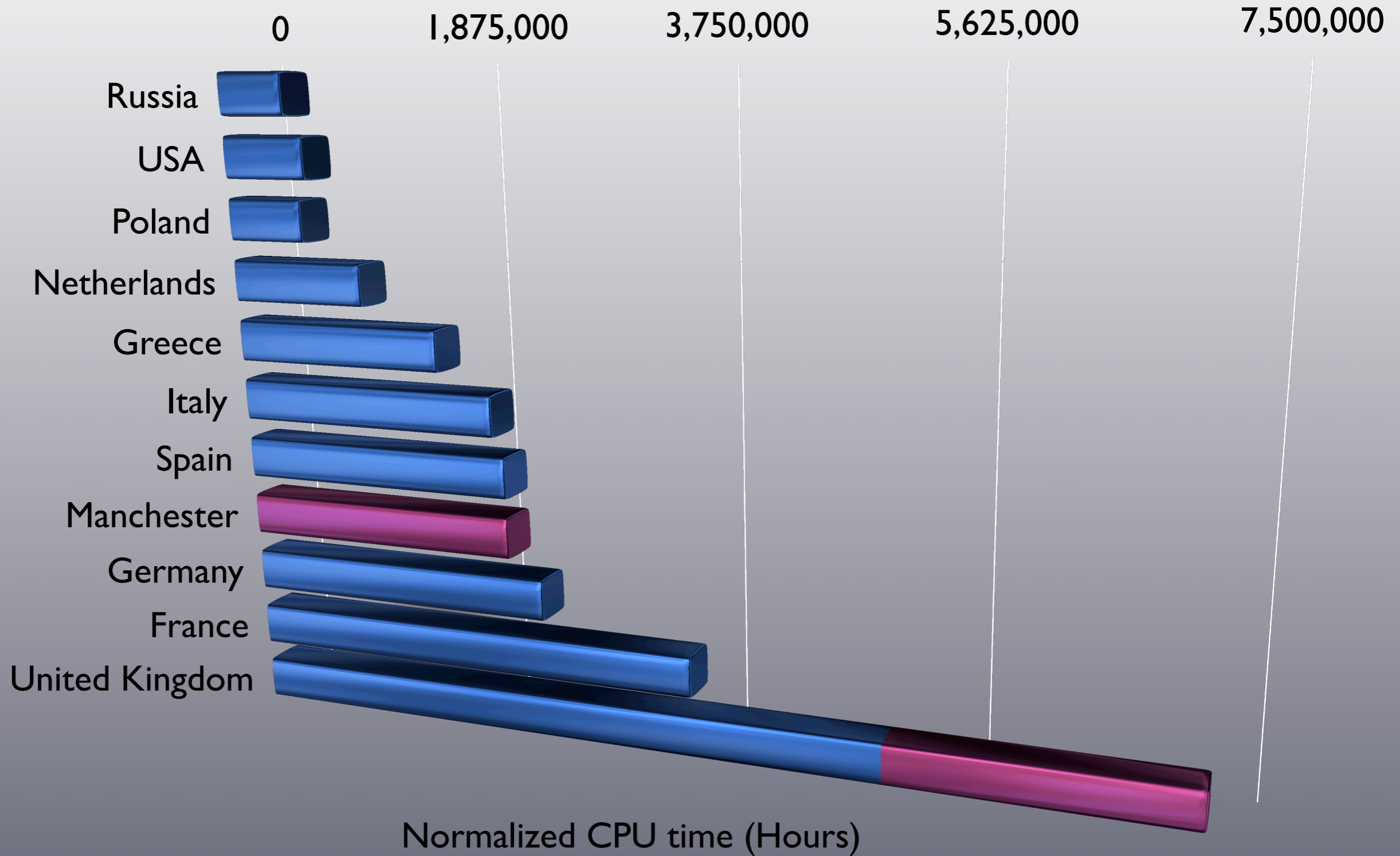
The Network

- 51 Switches
- 50 Dell 5324
- 1 Cisco 6509
- 1250 Gbit links
- Multi-homed 10Gig



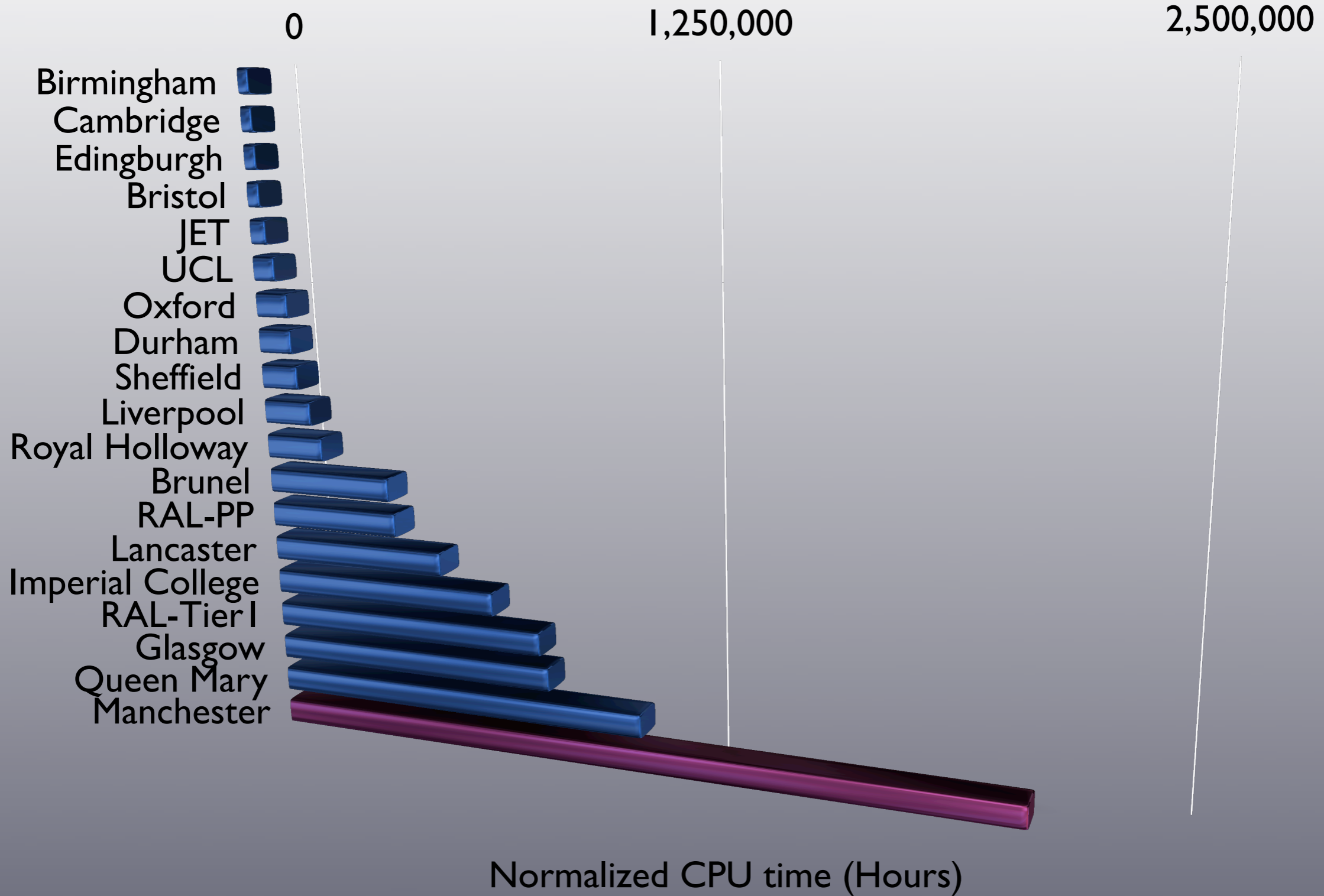
Top 10 EGEE Countries

Jan - March 2007



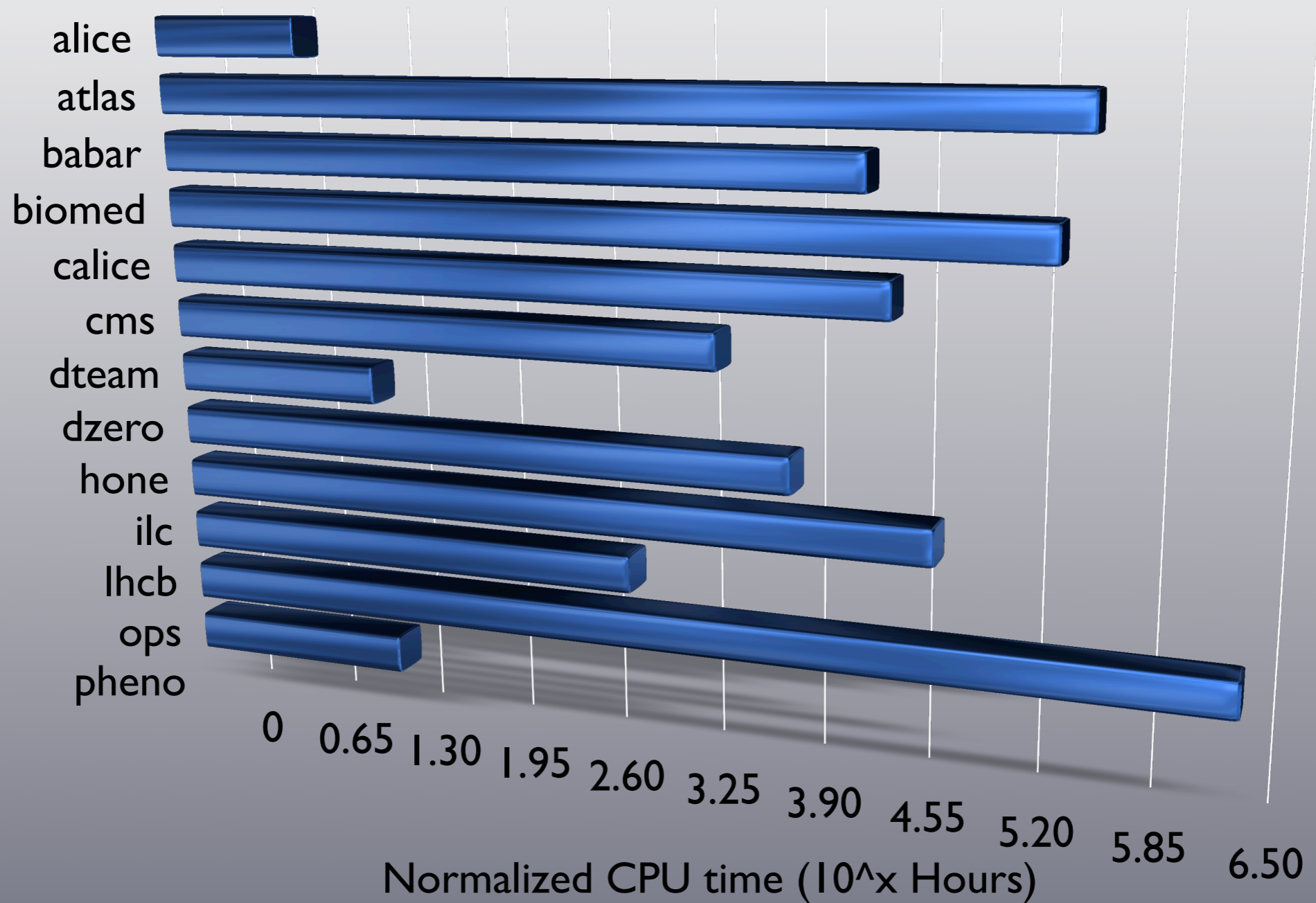
UK Sites

Jan - March 2007



Manchester VO Usage

Jan - March 2007



Dcache Upgrade

- upgrade from 1.6.6 to 1.7.0-34
- | cfengine snippet
- replica manager
- rack-aware replication

Nagios Plugins

- `check_pbs` - use 'qstat' to gather information about the PBS system
- `check_pbs_mom` - Check the current status of a node by querying its `pbs_mom`
- `check_pbsnodes` - query node status via central `pbsnodes` (will implement central cache)

xrootd

- Easy to configure
- Lack of configurability
- Problems with servers dropping in and out
 - check UID range in epilogue
- auto-discovery of other xrootd components
- No clear way to query current layout
- No way to force layout

xrootd & Cfengine

- Automatic package installation via cfengine
- Automatic node configuration via cfengine

Questions ?

Resources

- <http://www.sysadmin.hep.ac.uk/wiki/Nagios:Plugins>
- <http://www.sysadmin.hep.ac.uk/wiki/Cfengine>