



Site Report

May 2006

RHUL

Simon George
Sukhbir Johal



Hardware ..clients

Approx 35 desktop PC's

12 custom made from BBAN Athlon 2400+ /512MB /40GB HDD
the rest vary although all Athlon 1700+ and above with 512Mb 40+GB HDD
All run SLC306 with a 2.4 kernel
2 WinXP desktops

Approx 24 Laptops

Varied makes although **Sony** seems most popular
Laptop policy – introduced by us recently covers our support levels
Most use wireless connection both 802.11b and g available
Standard setup WinXP with CygWin (rxvt + ssh + X)
(dual boot does not update well but some people still need it)



Hardware ..servers

Unix Environment:

1 server running RedHat Enterprise 3 (2.4 kernel)
runs NIS, DHCP, HTTP (inc. twiki, bugzilla), Exim, Imap and MySQL

Approx 9 servers running SLC306 with a mixture of 2.4 and 2.6 kernels
2 64bit version on an Athlon64 4000+ proc

3 Sun servers

- 1 E450 on Solaris8: users' /home directories & L25 LTO2 tape library
- 1 E250 on Solaris8: Babar Farm + 0.5TB raid5 – decommissioning
- 1 SunBlade100 Solaris10: used for Mentor and OS patch tester

Babar and Grid farms – see later.



Hardware ..servers

Storage servers



- 1 new 4u RAID6 file server – users' /scratch directories, FLC and Babar data
 - runs SLC306 with 2.6 kernel
 - 2x80GB RAID0 system disks, DVD ROM, 3GHz Xeon Proc, 2xGB LAN
 - 16x500GB SATAII –Areca 1160 PCIx with 1GB battery backed mem
 - 6.4TB usable space with RAID6
 - Broadberry - delivery a bit slow, support ok, works fine (8/10)
- 1 test RAID file server
 - 1 Areca 1110 with 4x500GB SATAII RAID5 → 1.5TB usable space
 - 1 3Ware 7xxx PATA/SATA 8x120Gb PATA → 686GB usable space

Found ATA disks (Maxtor) to be unreliable under heavy usage
3Ware (7xxx 9xxx) utils and drivers still not working for 2.6 kernels



Hardware ..servers

Windows Environment:

4 Windows servers

- Win 2000 Active Directory (Native) Domain

- 2 Domain Controllers

- 1 Win 2000 Terminal Server connect via Citrix ICA– decommissioning

- 1 Win 2003 x86_64 Terminal Server

Moving to RDP connection with tsclient + rdesktop –
v1.4.1 and above works well with 2003 TS

/Home and /Scratch directories mapped via Samba3 although still having
trouble with ACLs



Hardware ..GRID

Compusys Farm:

75 nodes → 2x Xeon Procs 3GHz, 80GB Hdd, 1Gb RAM

1 Master node → 2x Xeon Procs 3GHz, 2x 80GB Hdd, 2Gb RAM

4 GridPP front end nodes

All run SLC306 kernel 2.4

3 gridraid storage servers

2 with 3Ware 7xxx PATA → 2 x 1.4TB volumes

1 with 3Ware 9xxx SATA → 2.8TB volume

all 3 running SLC306 with 2.4/2.6 kernels

Failover master node, 1 AIT2 tape unit

HP gigabit ethernet throughout

Planning SRIF3 farm purchase around end 2006. Likely spec:

60-90 Dual Opteron, dual core with 8GB mem (2 per proc).

40TB RAID6. Usual concerns space, power + cooling





Network

Wired:

2xGb switch connected via 4 port trunk
All servers connect to Gb switches

Desktops predominantly 100Mb connections

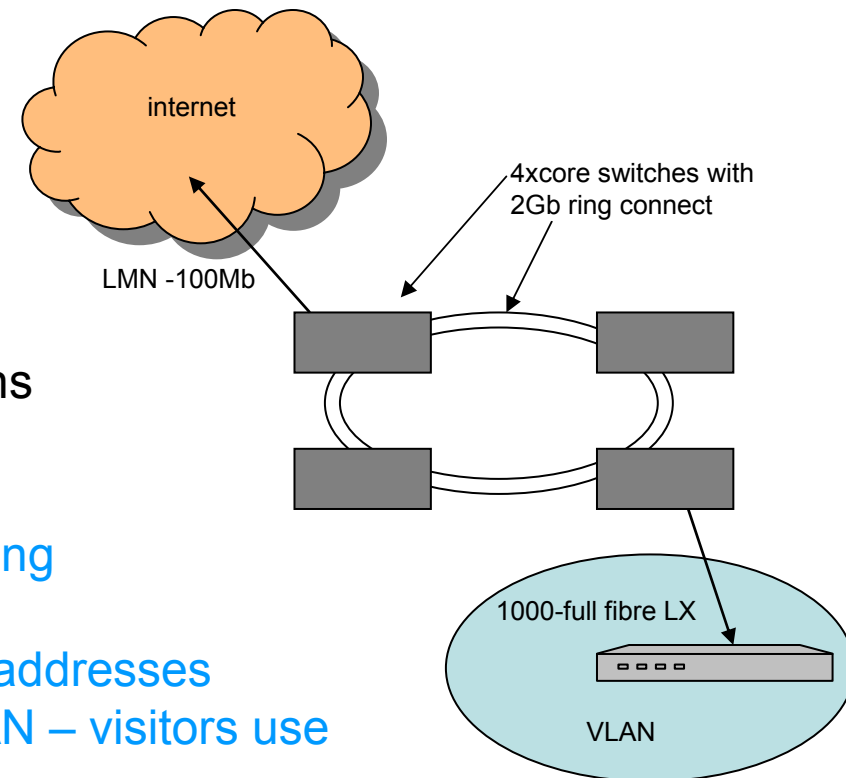
Wireless:

1 802.11b AP Cisco – WEP, and Mac filtering
dhcp via server – secure

1 802.11g AP Buffalo – WEP only, private addresses
issued by AP not connected to LAN – visitors use

Firewall:

We have a direct internet connection and manage our own firewall.
Still works on default DENY policy





Network Security

- Logwatch shows a lot of probing (e.g. http, ssh brute force) but no recent incidents
- Secure (physical and network access) syslog server continues to be a valuable resource
- Private wireless visitors' network reduces admin of connecting visitors with minimised impact on our network
- We are finding physical security becoming an increasing problem, more so during term time.



Previous Issues

- Issued a Laptop Policy to cover purchasing, maintenance and backup guides
 - Users' freedom of choice vs. quality of support
 - Users reminded of their responsibility for backups and OS updating
 - Suggest Norton Ghost for disk imaging and backups to external usb drive
- Chose and deployed SLC3 for all our desktops and servers with WinXP on laptops
- Worm-related DOS on college network under control

Forthcoming Issues

- Shutting down Babar farm
- OS upgrades: Solaris10, SLC4, RHEL4
- Grid SC network tests – working on upgrading our 100Mb link to LMN
- SRIF3 grid farm: joint venture with other departments and CC, first need to find room



HEP SYSMAN May 2006



HEP SYSMAN May 2006